

**Maximum Storm Tide Height
of 2 Meters
HAZARD MAP
Guiuan
Eastern Samar**



0 2,450 4,900 Meters

Mercedes

Guiuan

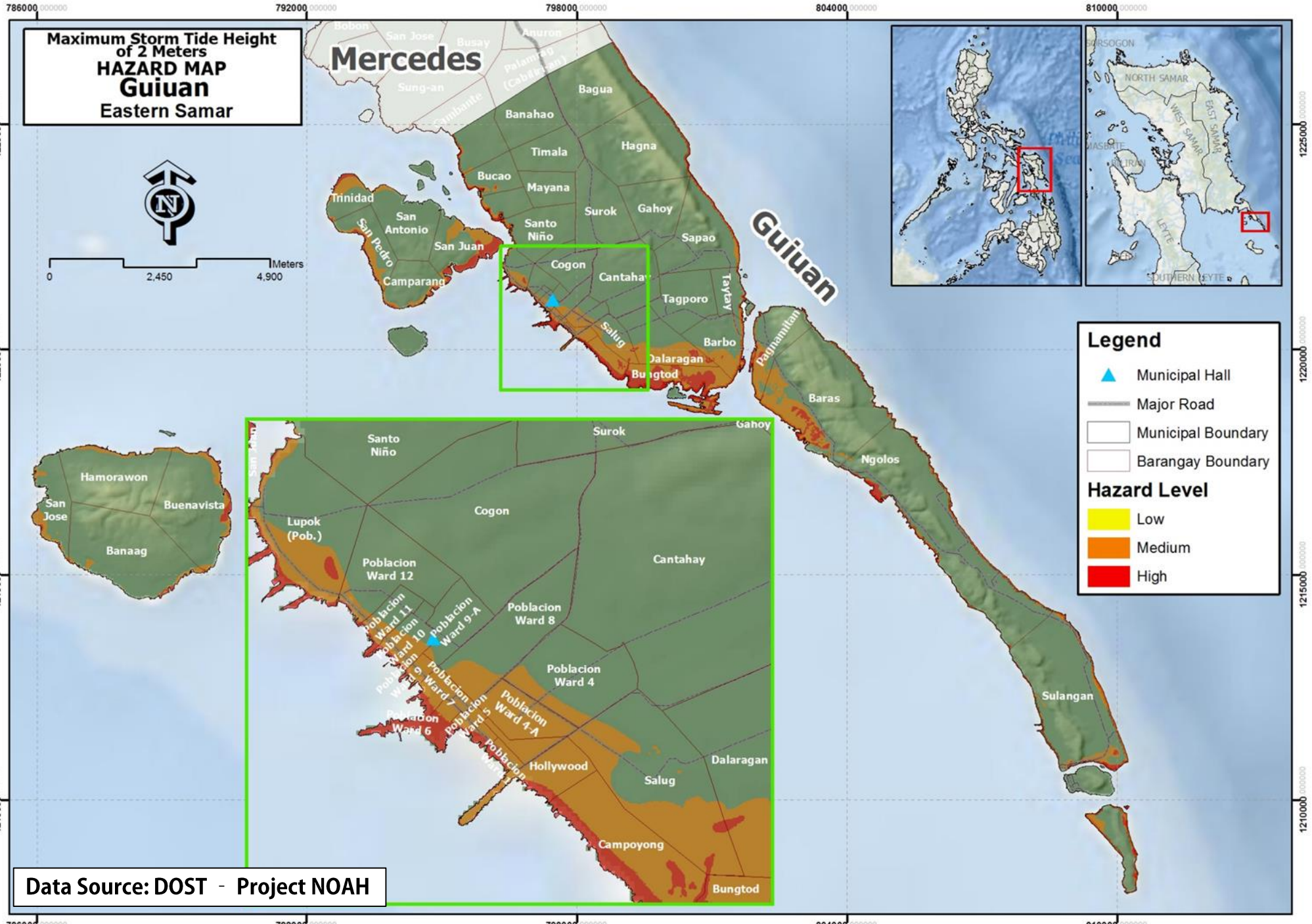
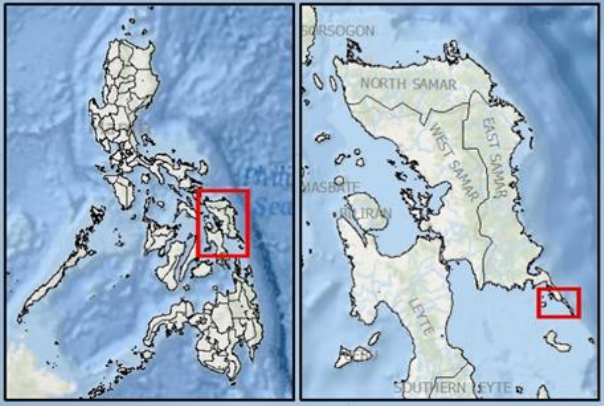
Legend

- Municipal Hall
- Major Road
- Municipal Boundary
- Barangay Boundary

Hazard Level

- Low
- Medium
- High

Data Source: DOST - Project NOAH



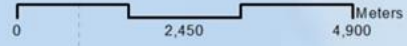
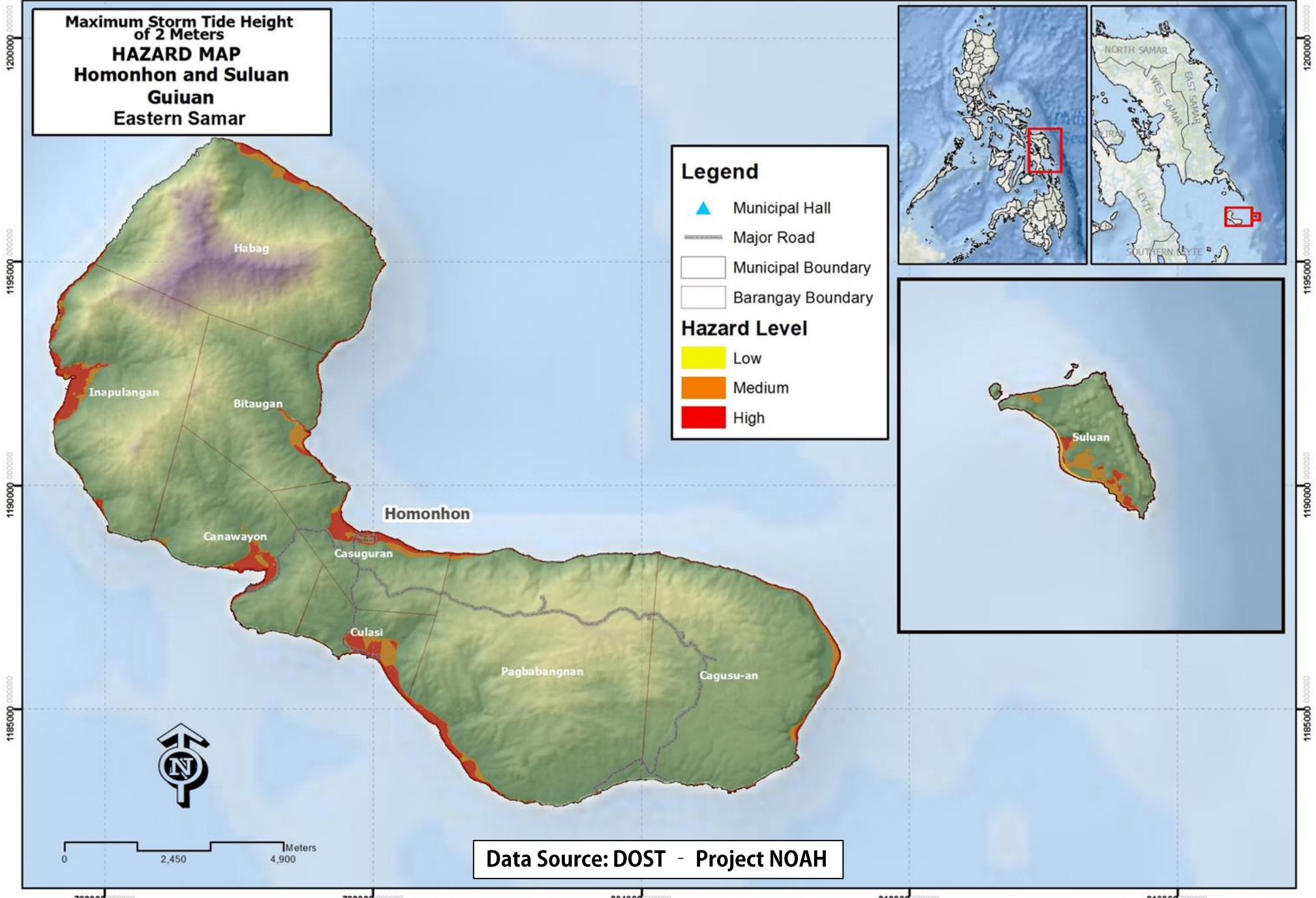
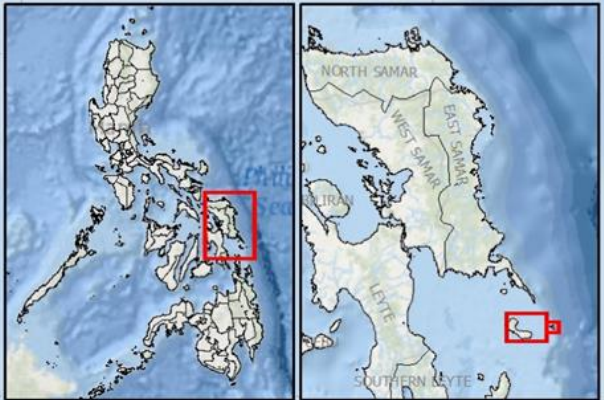
**Maximum Storm Tide Height
of 2 Meters
HAZARD MAP
Homonhon and Suluan
Guiuan
Eastern Samar**

Legend

- ▲ Municipal Hall
- Major Road
- Municipal Boundary
- Barangay Boundary

Hazard Level

- Low
- Medium
- High



Data Source: DOST - Project NOAH