

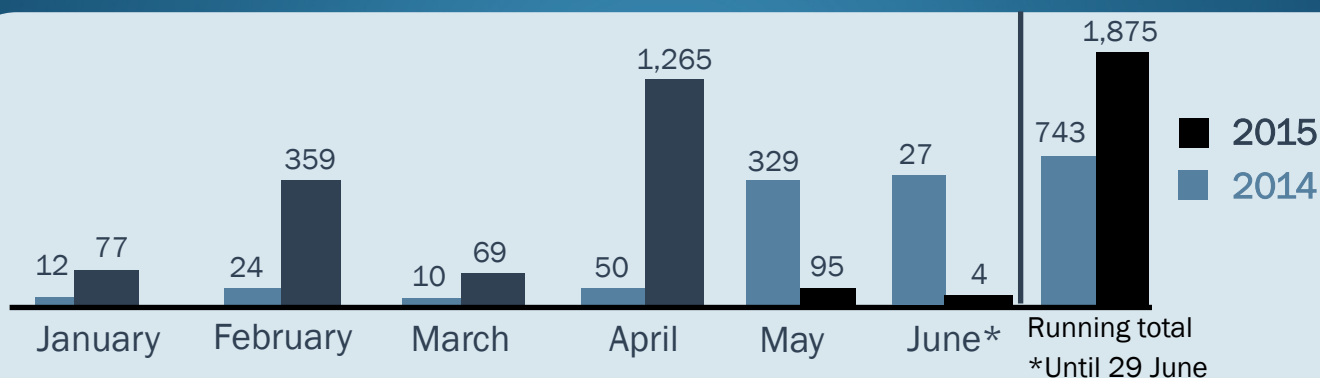


Mediterranean Update

Missing Migrants Project 29 June 2015



MIGRANT FATALITIES IN THE MEDITERRANEAN



MIGRANT ARRIVALS 2015

Total Arrivals: (to date) 132,711

Italy	66,120
Greece	65,282
Malta	92
Spain	1,217
Total	132,711

Estimates based on data from respective governments and IOM field offices as of 29/6/2015. Data for Greece until 28 June.

TOP FIVE COUNTRIES OF ORIGIN

1 January–31 May 2015

Destination

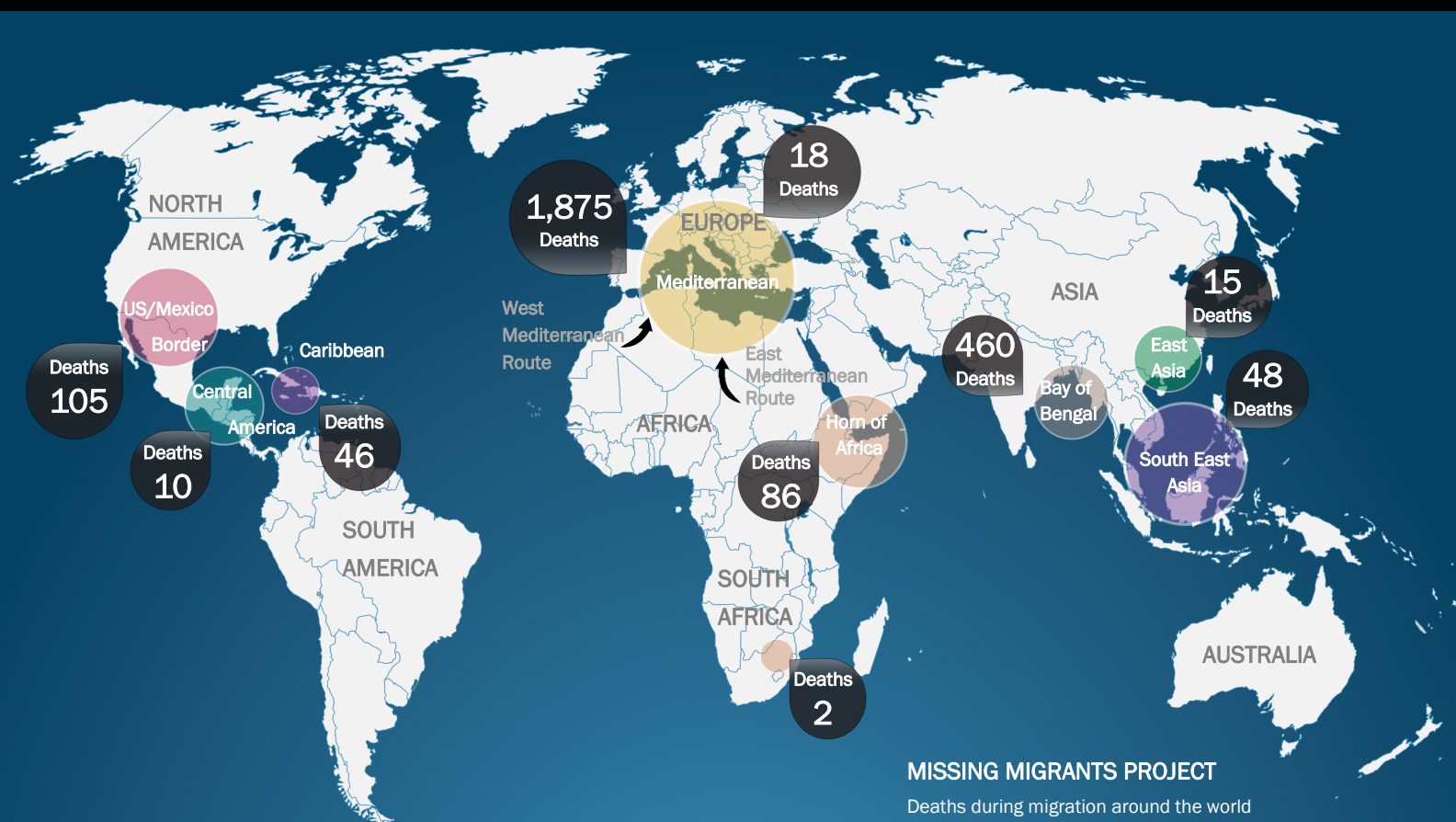
	Greece	Italy	Malta	Spain	Total
Origin Country					
Syria	22,582	3,185	0	NA..	25,767
Eritrea	219	10,985	0	NA..	11,204
Afghanistan	10,053	62	0	NA..	10,115
Somalia	971	4,958	3	NA..	5,932
Nigeria	269	4,630	0	NA..	4,899

The Missing Migrants Project is a joint initiative of IOM's Migration Research Division (MRD) and Media and Communications Division (MCD).

#MissingMigrants

MissingMigrants.iom.int

GLOBAL OVERVIEW: OVER 2,700 MIGRANT DEATHS TO DATE IN 2015



KEY DATA ON MIGRANT FATALITIES

The Missing Migrants Project is the only global database sharing key data on deceased and missing migrants around the world. The aim is to strengthen advocacy and support a more informed policy response.

SUPPORTING FAMILIES OF MISSING MIGRANTS

The project empowers families of the missing by providing information and guidance, including on identification of the missing and dead, with the aim of affirming the rights and dignity of migrants and their families.

GLOBAL INFORMATION HUB ON MIGRATION

The project underlines the global scale of the crisis by sharing key information on migrants dying along migratory routes around the world. The platform also enables feedback from migrants and families of the missing.

Deaths between 1 Jan 2015 – 29 June 2015

Regions	Deaths ^a
Mediterranean	1,875
Bay of Bengal	460
US Mexico Border	105
Horn of Africa	86
Sahara	48
Southeast Asia	48
Caribbean	46
Europe ^b	18
East Asia	15
Central America	10
Southern Africa	2
TOTAL	2,713

Legend:

(a) These figures refer only to deaths that have been reported; unknown numbers are not recorded. This map represents only a base minimum.

(b) Includes deaths in Northern Europe, Southeastern Europe, and Western Europe.

* Data compiled by IOM's Migration Research Divisions (MRD). All numbers are minimum estimates based on data from respective governments and IOM field offices as of 29/6/2015.

The Missing Migrants Project is a joint initiative of IOM's Migration Research Division (MRD) and Media and Communications Division (MCD).

#MissingMigrants

MissingMigrants.iom.int