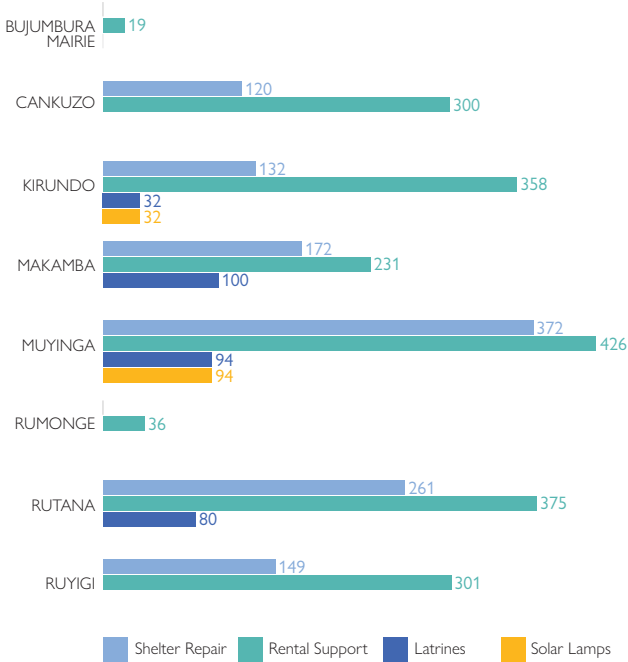
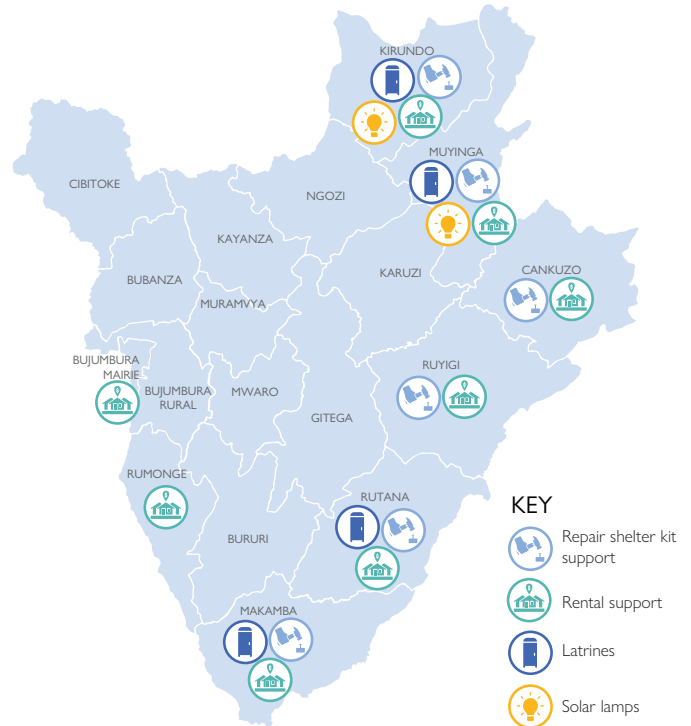


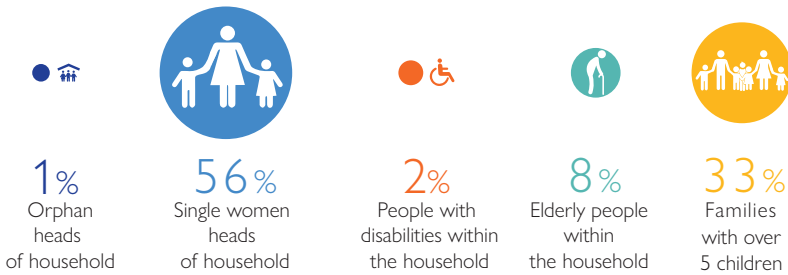
TYPES OF ASSISTANCE RECEIVED



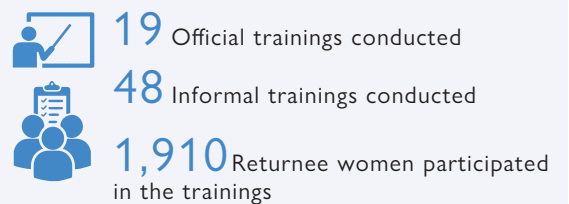
TYPES OF ASSISTANCE RECEIVED PER PROVINCE



HOUSEHOLDS BY VULNERABILITY



TRAINING ON* SHELTER REHABILITATION



*Training includes risk mitigation building techniques

CASH TRANSACTIONS DONE

	TRANSACTIONS
Cash for Rental Support (including host community and returnees)	4,546
Multipurpose cash assistance	964
Cash for Wall Rehabilitation	1,682
Cash for Work: Non-Expert Labour	1,208
Cash for Work: Expert Labour	474
Cash for Work: Focal points in the community	27



For more information please contact:

Michel JAQUET, NFI/Shelter/WASH Officer,
Email: mjaquet@iom.int
Website: www.iom.int

WITH THANKS TO OUR PARTNERS:

