

International Dialogue on Migration (IDM) 2012

Session II: Immediate Response - Assistance and Protection to Migrants Stranded in Crisis

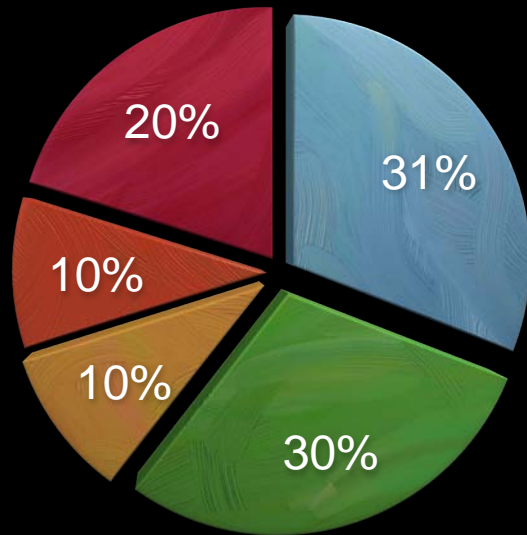
Assistance to Foreign Nationals in the Areas Hit by the Great East Japan Earthquake

Akihiro Izumi, Ministry of Foreign Affairs of Japan

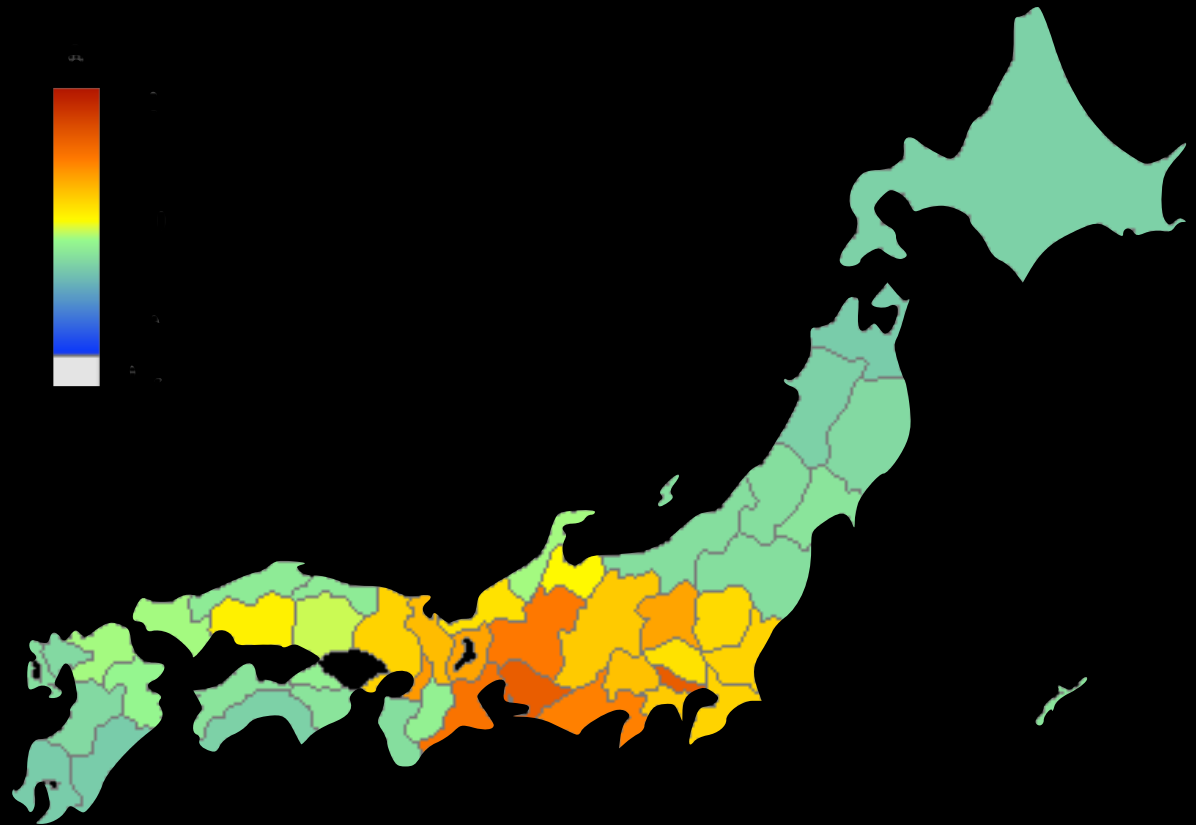
Foreign Residents in Japan

2,078,480

Registered as of March 2011



- Chinese
- Korean
- Brazilian
- Philippines
- Others



What had happened

14:46 PM, March 11, 2011





An aerial photograph of a conflict zone, likely in Gaza, showing extensive destruction, smoke rising from the ground, and debris scattered across the landscape. The image is dark and somber, with a blue tint.

More than 15,800 death confirmed
including 23 Foreign nationals

Around 6,000 injured
including 173 Foreign nationals

On March 11th

33,600 foreign residents
lived in the three main
affected prefectures.

200,000 foreigners lived in
the the surrounding
prefectures.

423,000 foreigners were
visiting the area.

In total 700,000 foreigners
were in the affected area.

AOMORI

IWATE

MIYAGI

FUKUSHIMA

TOCHIGI

IBARAGI/CHIBA

Departure of Foreign Residents From the Affected Areas

since March 11, 2011



Approx. **3,500**
left Japan after
the quake

— Total
— MIYAGI
— FUKUSHIMA
— IWATE

Our response



Humanitarian action first



Ministry of Foreign Affairs (MOFA)

1 Information services

- Web based news release;
- Daily briefing for diplomatic corps;
- National Radio Network (NHK World); and,
- Briefing for foreign business communities.

Ministry of Foreign Affairs (MOFA)

2 Support to Foreign Nationals

- Collaboration in search efforts with diplomatic corps, police and local government;
- Dispatch of the ministry officials to the affected sites; and,
- Facilitation of rescue and voluntary return arrangements for foreign nationals.

The background image shows the main building of the Ministry of Justice (MOJ) Immigration Bureau in Tokyo. It is a large, historic building with a red brick facade, white columns, and a blue roof. A Japanese flag is visible on the right side of the building. The text is overlaid on this image.

Ministry of Justice (MOJ) Immigration Bureau

- Quick issuance of Visas for families and humanitarian workers to assist victims.
- Eased re-entry and over-stay process for foreign residents.



Collaboration with IOM



IOM MOJ joint mission to the disaster affected area

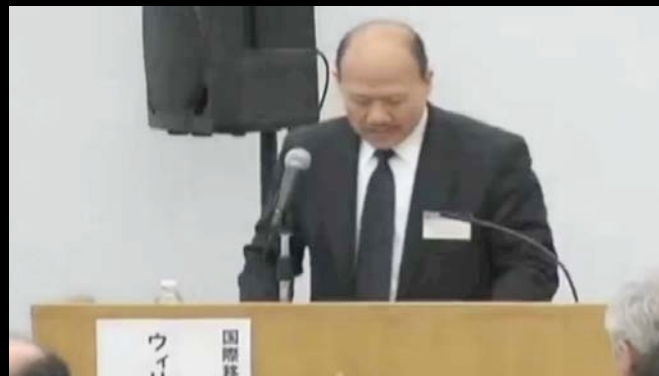
A Pakistani family leaving Japan with the assistance of IOM and MoJ



A photograph showing three people and a baby, all wearing face masks. The person on the left is wearing a dark jacket and a dark cap. The person in the center is wearing an orange jacket and a white face mask. The person on the right is wearing a green jacket and a white face mask. A baby is visible on the right, also wearing a white face mask. The text "Lessons learned" is overlaid in white on the image.

Lessons learned

**INTERNATIONAL WORKSHOP ON
ACCEPTANCE OF FOREIGN NATIONALS
AND
THEIR INTEGRATION IN JAPAN:
—East Japan Earthquake and the Policy
on Foreign Nationals—**



- Strengthen inter-ministerial cooperation, diplomatic corps, local governments and NGOs.
- Use IT (social media) for better communication, but P2P contact is vital for survival.
- Ensure safety net for vulnerable foreigners.
- But, DON'T forget that foreigners can play as an active agent in the crisis situation.

A photograph of a man with a beard and glasses, wearing a grey beanie and a dark hoodie, hugging a child. The child is wearing a dark jacket with a white stripe on the sleeve. The background is blurred, showing other people. The text "Thank You!" is overlaid in white.

Thank You!