



Photo: AFP/Aris Messinis



Vol. 1 | January 2017

January 2017 Programme Updates

- The **Expertise France project** supporting the Migration Response Centers in Sudan and Djibouti was finalized with both parties signing the grant agreement in December and the start date of 01 January 2017 established. On 17 January a meeting was held with Expertise France as there are some modifications to the project document due to the political situation changing since the project was initially designed. It should also be noted that monitoring and evaluation will be conducted by Altai, an external implementing partner of Expertise France.
- The **Social Impact evaluation** of the PRM regional mixed migration project was carried out in Kenya, Ethiopia, and Djibouti from mid-January to 08 February. The IOM offices were instrumental in supporting the numerous meetings and logistics associated with the sites that the evaluation team visited. The draft report is scheduled to be shared with IOM in mid-March.
- Regional Office M&E Officer is supporting the regional mixed migration programme with a **monitoring and evaluation framework**. This was finalized in January, and is a response to the OIG Project Monitoring Visit to Kenya conducted in October of 2016. This has been or will be shared with country offices to help improve tracking and measuring impact of the projects. Many thanks to Robert Odhiambo for the support on this.
- IOM attended with other key stakeholders a half day meeting on RMMS's **Mixed Migration Monitoring Mechanism (4Mi)**, which is being overhauled and redesigned. The layout, methodologies and data presentation/graphics on the 4Mi website will be updated in the coming months and will provide a unique platform for assessing mixed flows along the irregular migration corridors of the Southern Route and the Central Mediterranean Route.
- Several discussions have been completed with **MICIC and MCOF** focal points for the preparation and design of a training of trainers that is tentatively scheduled for late April and will be conducted at IOM's African Capacity Building Center (ACBC) in Moshi, Tanzania. This is a requirement of the current phase VII for PRM and is included as the 5th pillar for the regional migration programme model.
- IOM-Washington has indicated that PRM will soon disseminate the **call for proposals for regional mixed migration programme for the next fiscal year 2017-18**. Typically this process starts in February for coordination and endorsement with the country offices for project design and implementation. Please be prepared to prioritize this as soon as the announcement is made. A teleconference in this regard is scheduled for next week (February 13th) with PRM focal point for the Horn of Africa.

Summary of December 2016 Regional Migration Response Center Data Collection System

In December 2016 there was a 35% decrease in the number of migrants interviewed, with a total of 527 from four MRC locations.

- Of the 527 migrants interviewed 223 were in Somalia, representing 42% of the total. December data shows 76% were men and 24% were women.
- 99% of the migrants were Ethiopian and 405 individuals (77% of the total) were intending to travel to Saudi Arabia.
- The number of children interviewed in December reduced to 87, from 90 in September.
- This month 77% of the migrants left their homes for "economic reasons". This is the same percentage as November for "Reasons for Leaving".
- 8% of the total were identified as possible victims of trafficking, while 3.8% were asylum-seekers, and referred to UNHCR in December.

Summary of Migration Data for 2016

The RMMS and UNHCR have compiled final arrival data for Yemen for 2016, of which the main points are:

- Total arrivals in 2015:** 92,446
- Total arrivals in 2016:** 117,107
- 27% increase** from 2015 to 2016
- Of the 117,107 for 2016, 20,128 were Somali Nationals, representing 17% of overall caseload; and 96,979 were Non-Somalis (mostly Ethiopians) representing 83% of the total.
- 18,458 individuals**, representing 16% of the total, used the Red Sea Route via Djibouti
- 98,649 individuals**, representing 84% of the total, used the Arabian Sea via N. Somalia (primarily Puntland)
- Average monthly movements across Djibouti: 1,538 individuals
- Average monthly movements across N. Somalia: 8,221 individuals
- Other nationalities: 13
- Dead or missing: 79

Joint IOM - UNHCR Statement on President Trump's Refugee Order

Switzerland - IOM:

"The needs of refugees and migrants worldwide have never been greater and the US resettlement program is one of the most important in the world.

The longstanding policy has offered a double win: first by rescuing some of the most vulnerable people in the world and second by enabling them to enrich their new societies. The contribution of refugees and migrants to their new homes worldwide has been overwhelmingly positive.

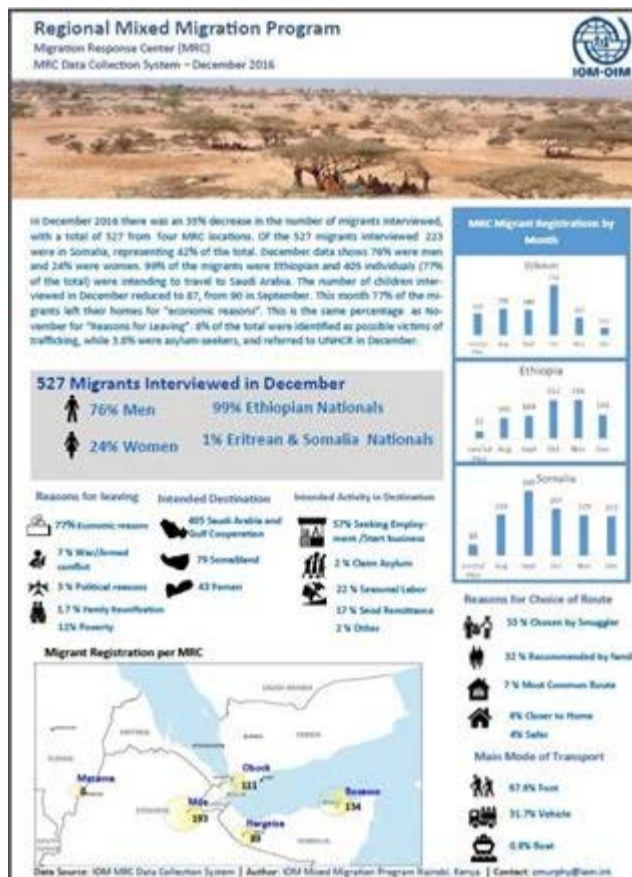
Resettlement places provided by every country are vital; The International Organization for Migration (IOM), the UN Migration Agency and UNHCR, the UN Refugee Agency, hope that the US will continue its strong leadership role and long tradition of protecting those who are fleeing conflict and persecution.

IOM and UNHCR remain committed to working with the US Administration towards the goal we share to ensure safe and secure resettlement and immigration programmes." [Read on](#)

Media Highlights

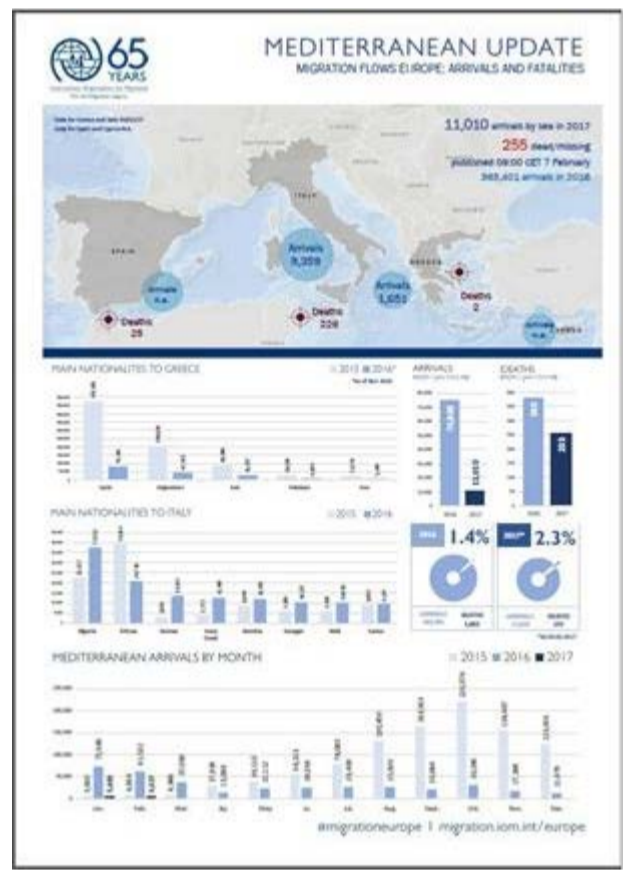
- Neil Carrier** of Oxford University publishes a book "**Little Mogadishu**" on Eastleigh, Nairobi as a "Migrant Hub" by underscoring the benefits of migration. [Read on](#)
- IOM Report** on the need for urgent assistance for Yemenis and Migrants affected by the Yemen Crisis. [Read on](#)
- IOM and UNHCR** Launch New Plan to Ease Plight of Refugees, Migrants in Europe. [Read on](#)

MRC Data Collection System December 2016 Report



IOM: Migration Flows to Europe, as of 07 February 2017

[Click Here for Report](#)



I Am a Migrant: [Read on](#)



#iamamigrant

Khadra

Occupation: Psychosocial assistant
Current Country: Djibouti
Country of Origin: Somalia
Previous Country of Residence: Netherlands

RMMS: December 2016 Summary

[Read on](#)



Follow us on Twitter!



@IOMNairobi
@IOMRONairobi
@tcraymurfury



For further information, comments, or suggestions, please contact T. Craig Murphy
Project Coordinator for Mixed Migration: cmurphy@iom.int