

# DISPLACEMENT TRACKING MATRIX EMERGENCY TRACKING

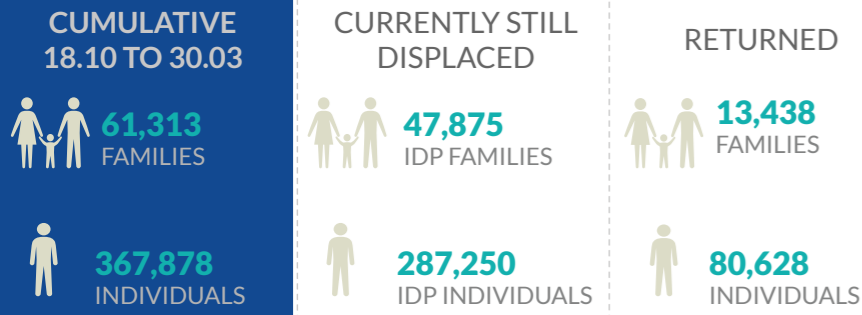
FACTSHEET #22 - MOSUL OPERATIONS FROM 17 OCTOBER TO 30 MARCH

The Emergency Tracking (ET) system is a crisis-based tool that aims at tracking sudden displacement or return movements triggered by specific crises. The ET figures reported on this portal are not cumulative of the all persons affected by the Mosul crisis thus far, rather the ET update provides only a snapshot of

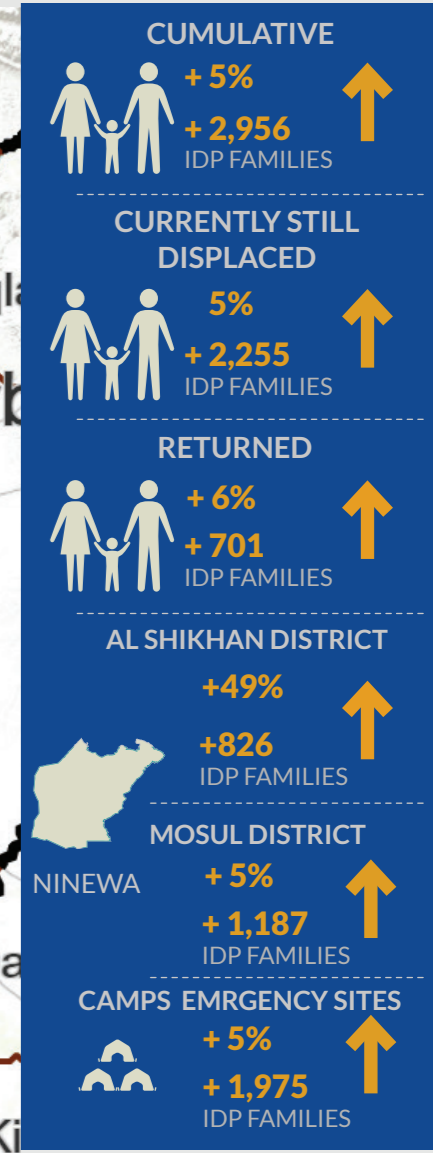
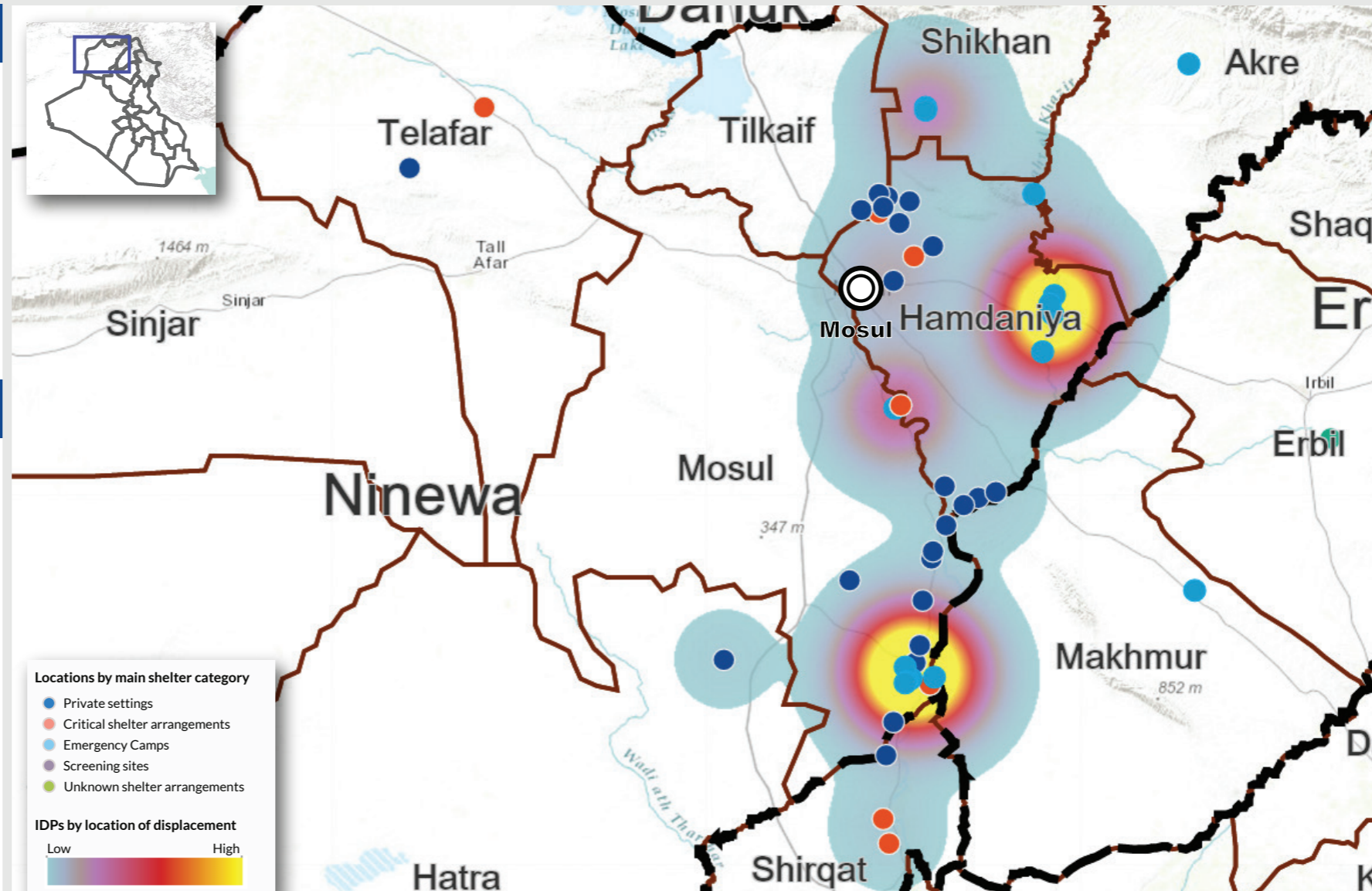
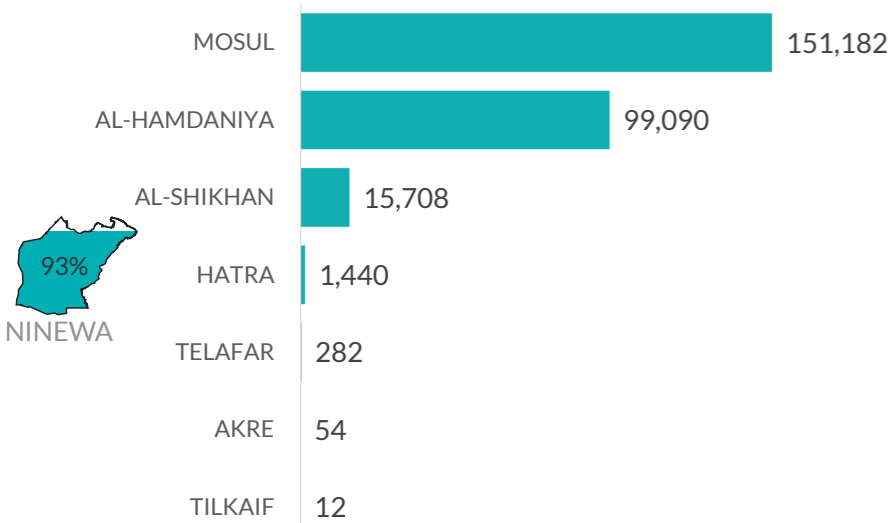
the current displacement situation for the indicated date. The data and information reported on this page are related solely to the displacement caused by the Mosul operations which started on 17 October 2016. Find more information at the Mosul Data Portal: <http://iraqdtm.iom.int/EmergencyTracking.aspx>



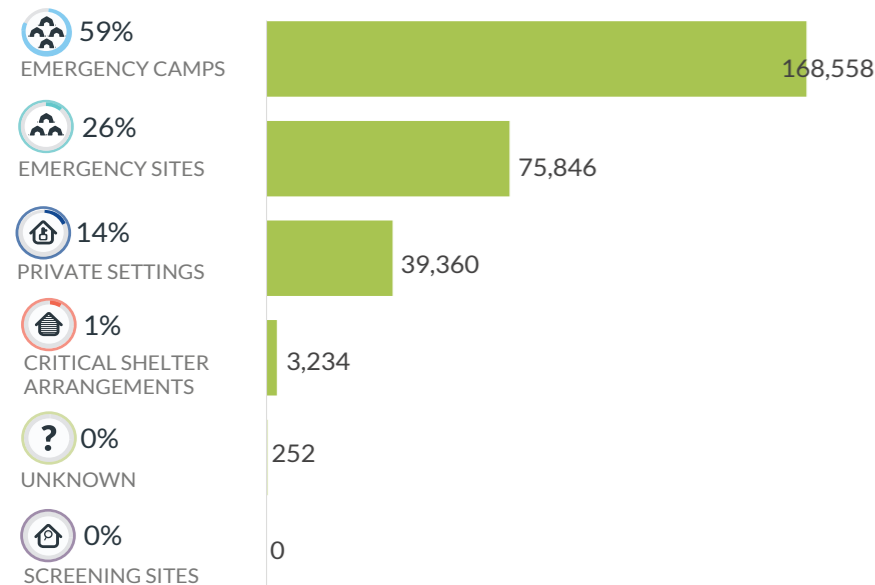
## CUMULATIVE FIGURES



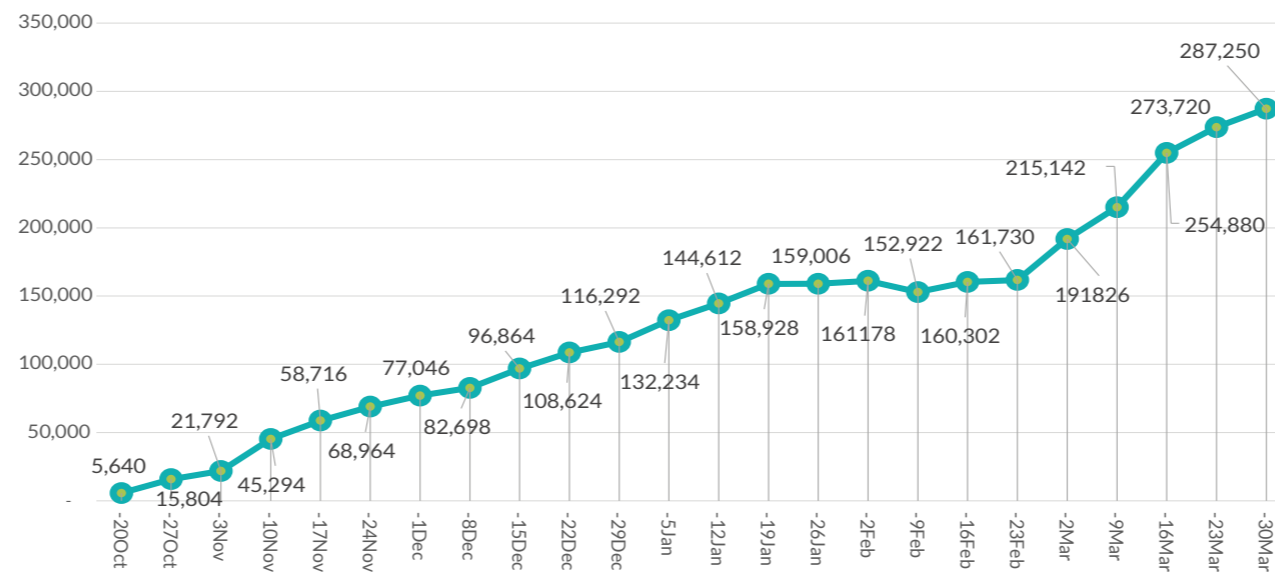
## NUMBER OF IDPS BY MAIN DISTRICT OF DISPLACEMENT



## NUMBER OF IDPS BY SHELTER CATEGORY



## DISPLACEMENT TIMELINE FROM 17 OCTOBER: WEEKLY UPDATES



## LAST WEEK DAILY UPDATES (FROM 9.3 TO 30.03)

