



DTM

IOM DISPLACEMENT TRACKING MATRIX

BURUNDI SEPTEMBER 2017



TABLE OF CONTENTS

- 1 IDP presence map
- 2 DTM Burundi Methodology
- 3 DTM Highlights
- 4 Displacement Reasons
- 5 Internal Displacement Trends
- 6-7 Humanitarian Overview
- 8 IDP sites
- 9-12 Natural Disaster Impact
- 13 Contact Information

This DTM report has been funded with the generous support of the Central Emergency Response Fund (CERF) of the United Nations and the Office of U.S. Foreign Disaster Assistance (USAID/OFDA).



USAID
FROM THE AMERICAN PEOPLE



United Nations
CERF | Central
Emergency
Response
Fund



DTM METHODOLOGY

The Displacement Tracking Matrix is a comprehensive system which collects data on Internally Displaced Persons in all provinces of Burundi.

1. Volunteers from the Burundian Red Cross consult key informants with knowledge of displacement trends and needs in their communities. Key informants are community leaders, local government authorities, or religious leaders.



2. Surveyors complete two types of assessments:

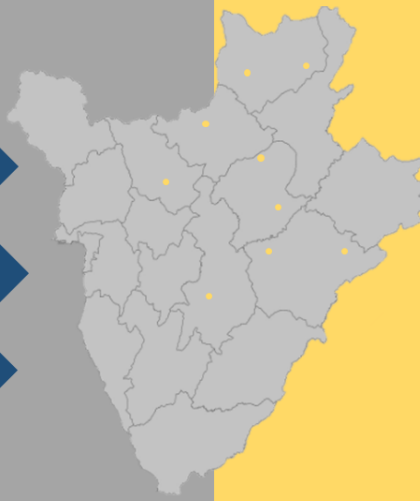


Commune level assessments

Provides information on displacement trends in the communes

Assesses all communes in Burundi (18 provinces)

Information on displacement periods, provinces of origin and new displacement phenomenas



Colline level assessments



Provides information regarding humanitarian needs

Assesses main displacement areas (*collines**) hosting more than 40 IDP households or 200 IDPs

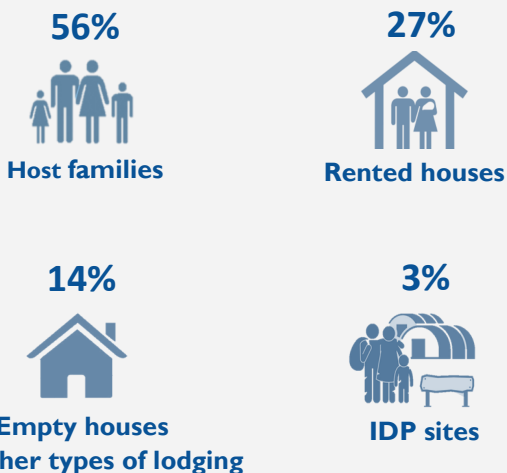
Information on demographics, vulnerabilities, and sectoral needs

3. Once data is verified, IOM compiles the data to produce a report.



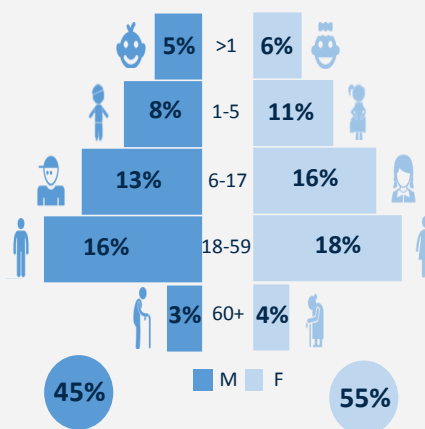
HIGHLIGHTS

ACCOMMODATION TYPES



Graph 1: Percentage of IDPs by type of accommodation

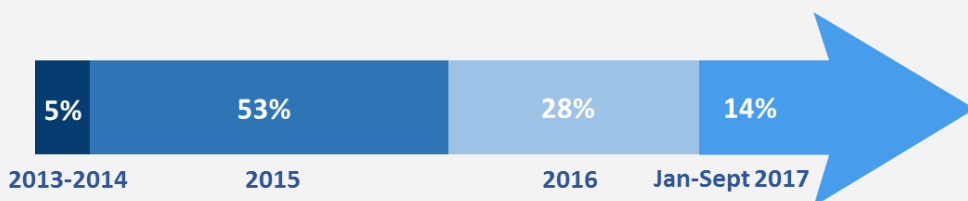
DEMOGRAPHIC OF IDP POPULATION



Graph 2: Demographic of IDP population

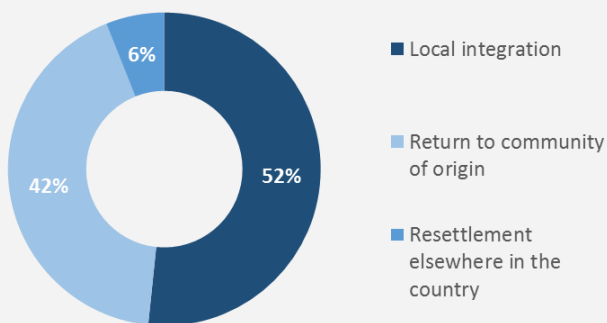


DISPLACEMENT PERIODS



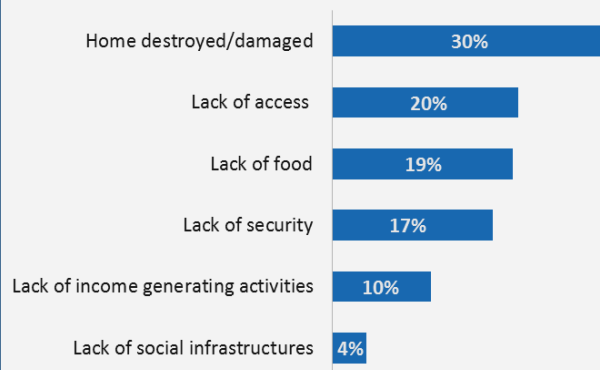
Graph 3: Percentage of IDPs by period of displacement

RETURN INTENTIONS



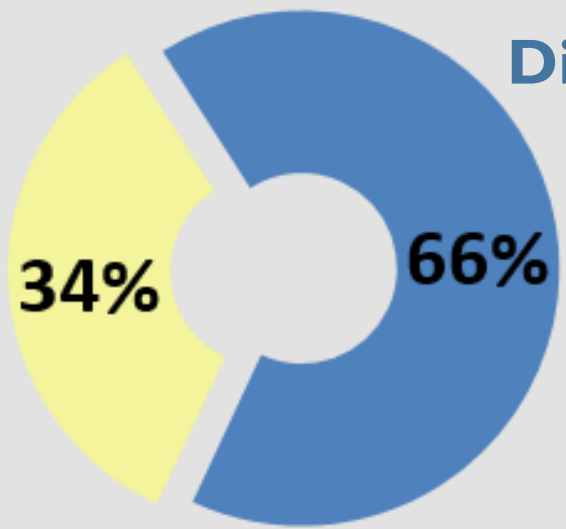
Graph 4: Percentage of collines by intention of the majority of IDPs

REASONS PREVENTING RETURN



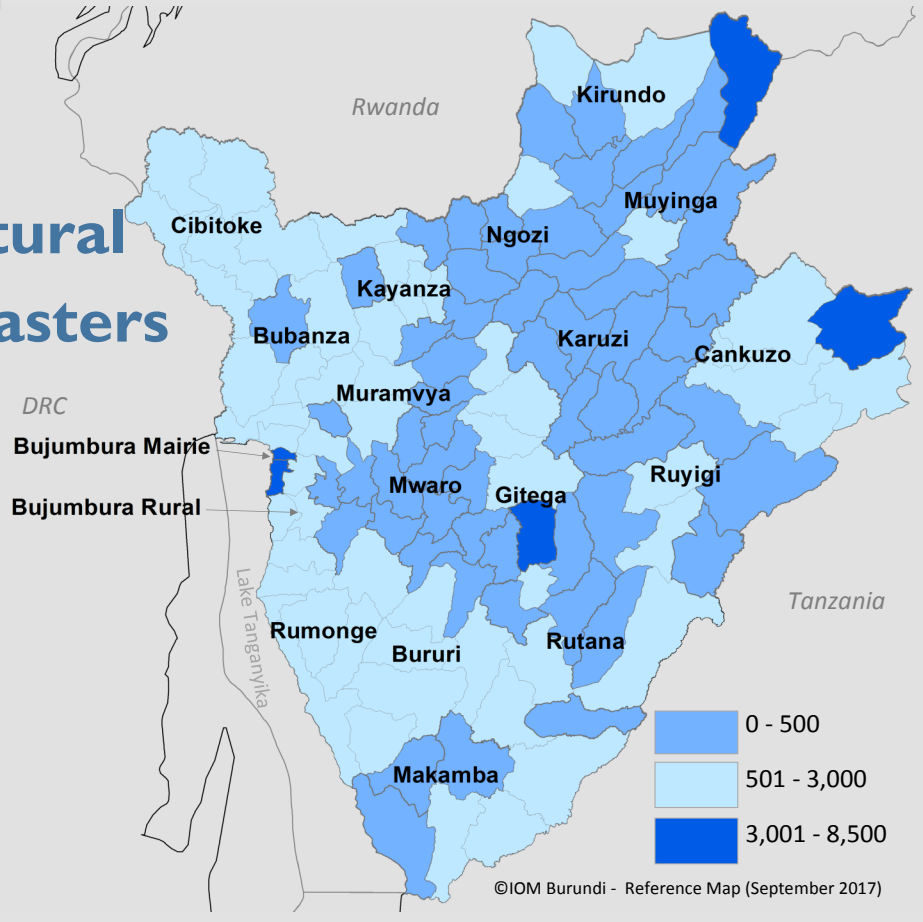
Graph 5: Percentage of collines by primary factor preventing return of the majority of IDPs

DISPLACEMENT REASONS



Graph 6: IDP reasons for displacement

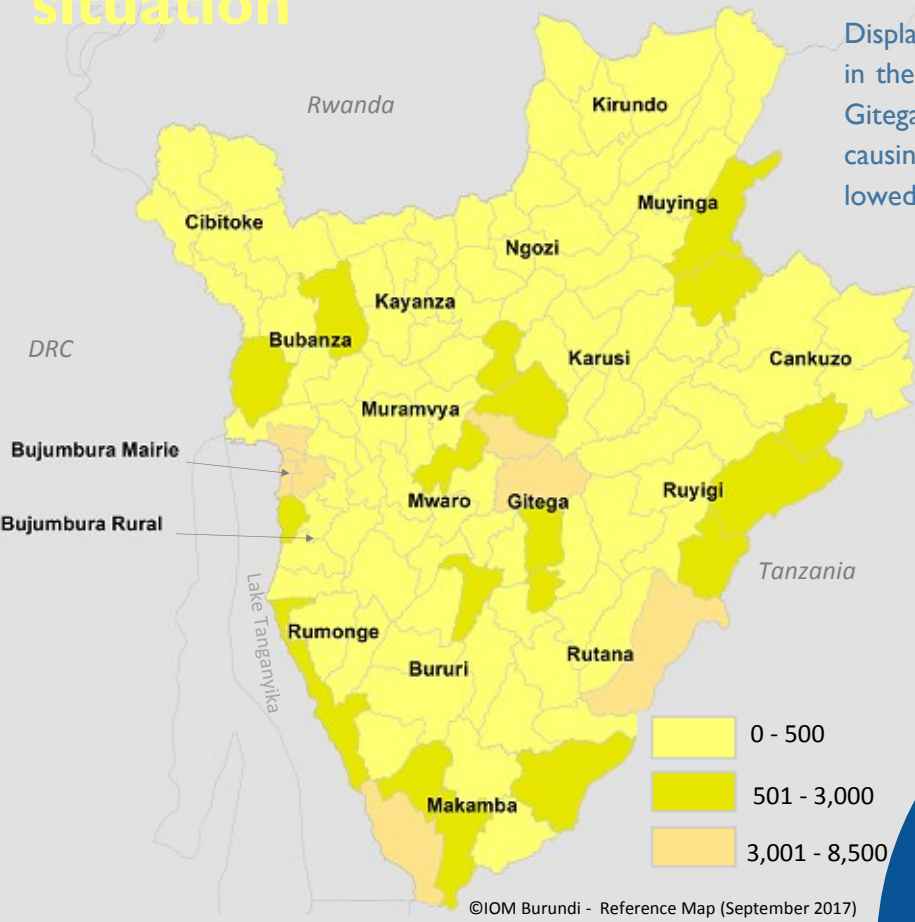
Natural Disasters



Map 2: IDP displacement due to natural disasters, by commune

Displacements caused by natural disasters are reported in the provinces of Bubanza (13%), Cankuzo (10%) and Gitega (10%). The most notable recent phenomenon causing the most displacement is drought (78%), followed by bush fires (19%).

Socio-political situation



Map 3: IDP displacement due to socio-political situation, by commune

61% of IDPs displaced due to the socio-political situation come from the provinces of Bujumbura Mairie (24%), Gitega (23%) and Makamba (14%).

Did you know?

An IDP is an individual who has been involuntarily displaced within a state's borders. DTM Burundi collects data on IDPs displaced due to the socio-political situation, natural disasters, and land expulsion.

DISPLACEMENT TRENDS

July 198.265 IDPs

August 191.806 IDPs

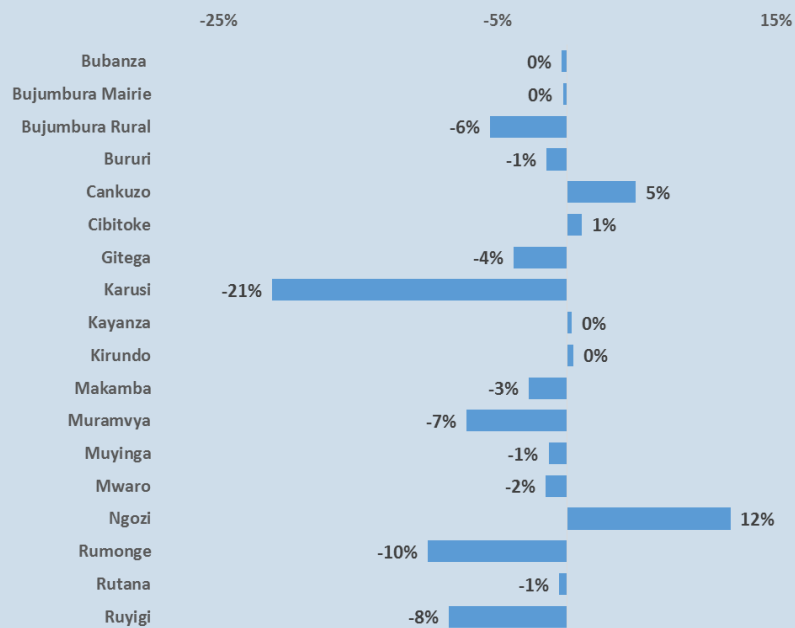
September 188.294 IDPs

From July to September 2017, the DTM revealed an overall decrease in the number of IDPs in Burundi. The principal reasons for this decrease are the reconstruction of IDPs' homes and the improvement of security in the capital, Bujumbura. In different provinces of the country, reconstruction activities of IDPs' houses have been undertaken by Red Cross volunteers, students during summer holidays and the local population during the dry season (June, July, and August). The Karusi province has experienced the most notable decrease in IDPs due to these reconstruction activities. Another reason for the overall decrease is the return of some IDPs displaced due to socio-political reasons from Bujumbura city due to the overall improvement in security.

The Muyinga province experienced a 9% decrease in IDPs from July to September 2017, especially in the Giteranyi commune. IDPs from Kirundo settle temporarily in this province before moving on to Cankuzo and Tanzania. IDPs who rely on daily labor move from Muyinga in search of labor and arable lands.

The IDP identification operation carried out by the International Organization for Migration (IOM) and the Burundi Red Cross in the two sites - Cashi and Gitaza of the Rumonge province in the month of August identified a decrease of more than 800 IDPs in these sites. The return of 489 IDPs to their communities of origin in the month of September 2017 also contributed to the decrease of IDPs in the province.

While security has overall improved, security incidents in Bujumbura city caused IDPs to both hide and leave Bujumbura causing a small decrease of IDPs in the capital in the past month. A grenade was thrown in the Buyenzi zone in August 2017, where a number of displaced persons were killed and others displaced due to this incident.



Graph 7: Trends in IDP presence from August to September by province

The existence of arable lands, the availability of transit to Tanzania through Cankuzo as well as communication between IDPs in Cankuzo and the population of Kirundo have contributed to the increase of IDPs in the Cankuzo province, particularly the Mishiya and Kigamba communes.

Wild fires in the Mabayi commune of the Cibitoke province have recently destroyed homes and displaced households. Torrential rains in late August and early September 2017 have also caused the displacement of populations in the communes of Mabayi and Bukinyana.

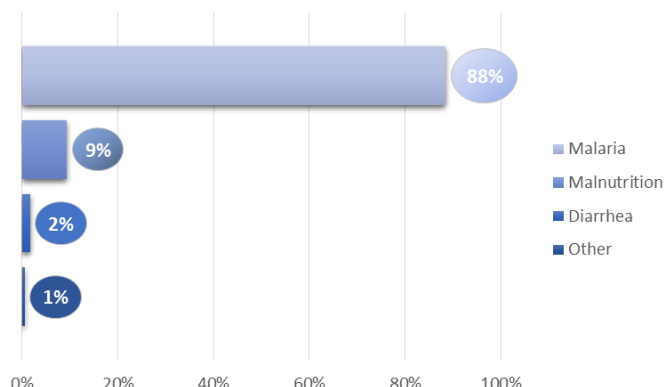


Map 4: Change in IDP presence from August to September, by province

HUMANITARIAN OVERVIEW

Health

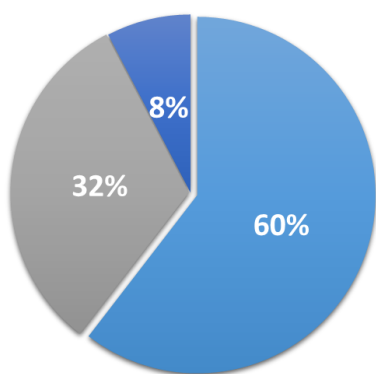
In 88% of surveyed collines in the country, malaria is the most frequently reported health issue. Bururi, Kayanza, Rutana, Rumonge and Ruyigi are the most affected provinces where malaria has been reported as the most recurrent issue in all surveyed collines (100%) in these provinces. In all surveyed collines of Bururi province, IDPs walk between 30 minutes and 1 hour to reach a health center.



Graph 8: Percentage of collines by most recurrent health issue

60% of internally displaced persons (IDPs) face severe food insecurity and eat only one meal per day. Bubanza and Kirundo provinces are the most affected with 83% and 93% of IDPs respectively, consuming only one meal per day. There have been no food distributions in 96% of all surveyed collines during the last 3 months.

Food Security

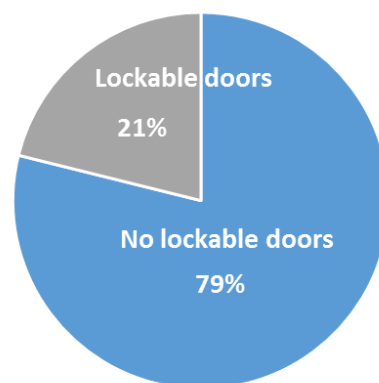


■ 1 meal/day ■ 2 meals/day ■ 3 meals/day

Graph 9: Percentage of IDPs by number of meals consumed per day

WASH

Regarding access to drinking water, 53% of surveyed collines report that IDPs walk between 15 and 30 minutes to reach the main water source. In the Muyinga province., IDPs walk between 30 minutes and 1 hour in 92% of surveyed collines to reach the main water source. There is no lighting around the latrines in 91% of surveyed collines and no lockable doors on latrines in 79% of surveyed collines in the country. There are no lockable doors on the latrines in all the surveyed collines of Bururi, Cibitoke, Rutana and Ruyigi provinces.

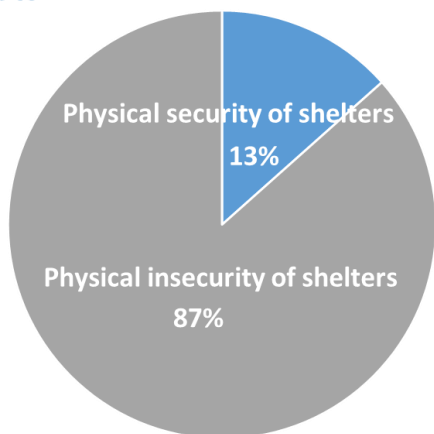


Graph 10: Percentage of collines with lockable doors on latrines

HUMANITARIAN OVERVIEW



Shelter



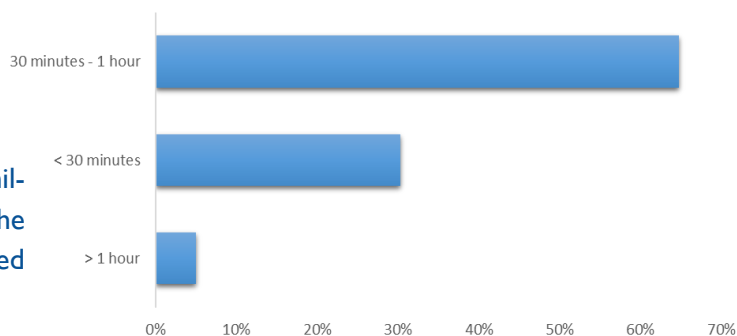
Physical security issues (shelters in poor conditions) are reported in 87% of surveyed collines in the country. The most affected provinces are Muyinga, Ruyigi, Makamba, Gitega and Kayanza where all surveyed collines face this problem. In 94% of surveyed collines in the province of Kayanza, plastic sheeting is the most needed non-food item (NFI) and kitchen utensils are most lacking in the province of Bururi where 89% of surveyed collines report this need.

Graph 11: Percentage of collines by presence of physical security issues with shelters



Education

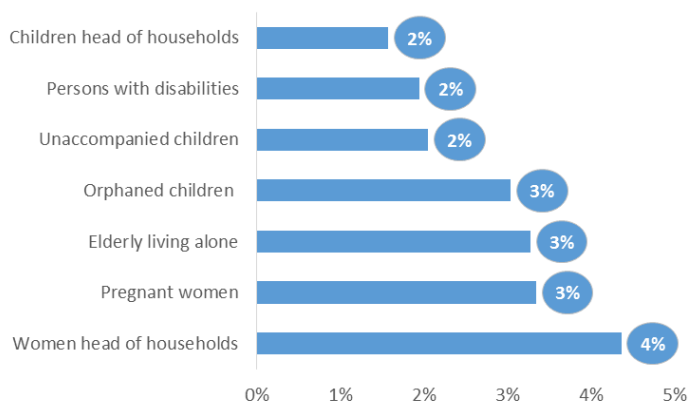
In 64% of surveyed collines in the country, displaced children walk 30 minutes to 1 hour to reach school. In the province of Rutana, displaced children in 22% of surveyed collines walk more than 1 hour to reach school.



Graph 12: Percentage of collines by distance walked by IDP children to reach school



Vulnerabilities



Women head of households represent more than 4% of the displaced population. In the province of Gitega, women head of households are 7% of the displaced population.

Graph 13: Percentage of the displaced population by identified vulnerability

3,744 IDPs in internal displacement sites

September 2017

Mushasha I and Mushasha II sites

The Mushasha I and Mushasha II sites of Mutimbuzi commune in the Bujumbura Rural province were created in June 2016 after the floods hit this commune. The 2,278 IDPs and 144 households in these sites originate from the Mutimbuzi commune. In both sites, more than 75% of shelters are flood prone. The IDPs in both sites are able to cultivate near the sites in the lands where they cultivated before the floods.

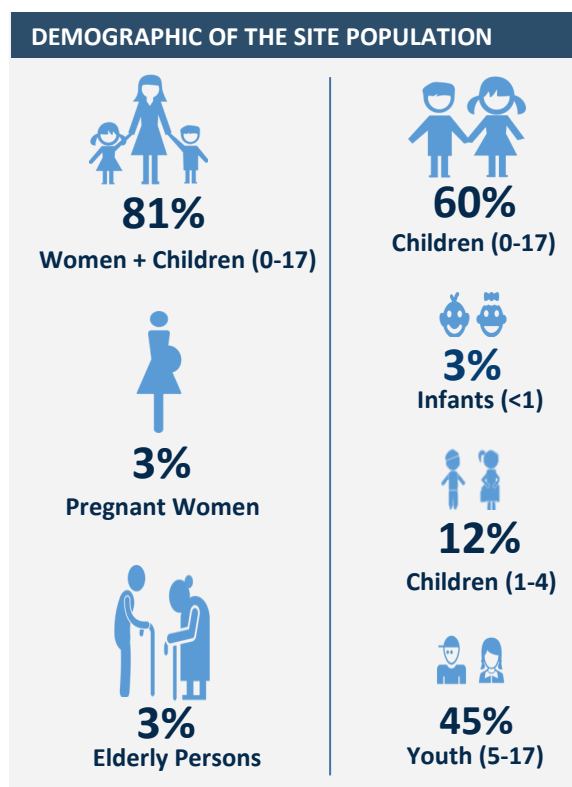
There are health centers accessible to IDPs but IDPs must pay for health services. Latrines and showers are separate for men and women, but there is no lighting.

Both sites are being closed and the government and shelter partners are planning to distribute a return package for all IDPs within these sites.

Cashi and Gitaza sites

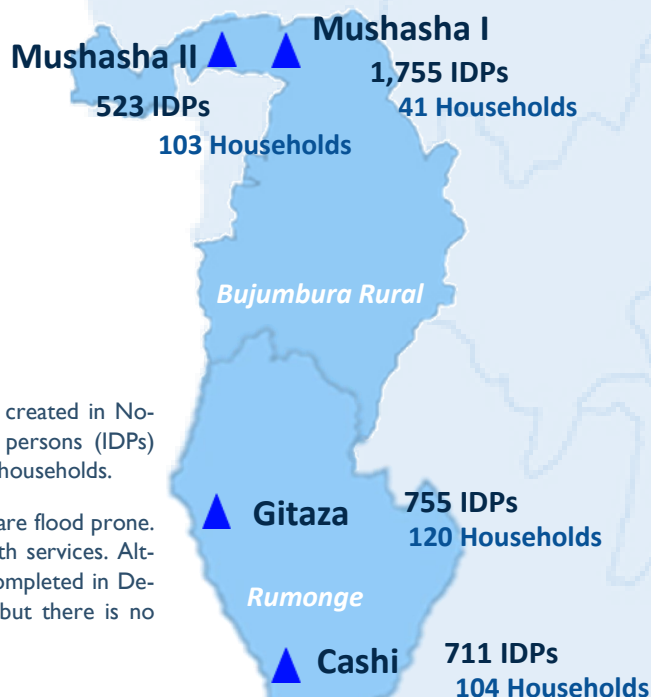
The sites of Gitaza (Muhuta commune) and Cashi (Bugarama commune) were created in November 2015 and February 2016 respectively. The 1,466 internally displaced persons (IDPs) originate from the commune of Muhuta (Rumonge province) and constitute 224 households.

The shelters in these sites are in poor condition. When it rains, more than 75% are flood prone. Health centers are accessible to IDPs in both sites but IDPs must pay for health services. Although wash stations are available at both sites, the last soap distribution was completed in December 2016. There are separate showers and latrines for men and women but there is no lighting.

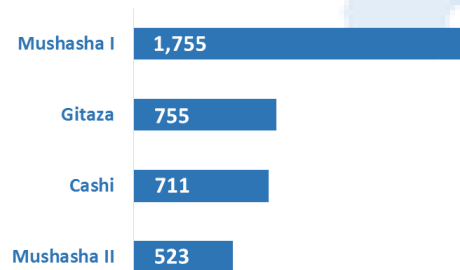


Both sites are being closed and the majority of IDPs (137 out of 224 households) will be relocated to land granted by the Burundian government in the Kigwena zone (Rumonge province).

At the relocation site, there are 177 plots available 40 of which are reserved for households in the host community. Foundations for 100 houses have been completed and shelter sector partners will provide sheeting and poles to construct transitional shelters. These will be progressively transformed into permanent shelters. The construction of the foundations for the 77 plots is in progress. All IDPs in the sites will receive a return package at site closing.



NUMBER OF IDPs IN INTERNAL DISPLACEMENT SITES



Site name	Number of functional latrines	Number of non-functional latrines	Number of functional water points	Number of non-functional water points
Cashi	36	0	4	6
Gitaza	17	13	14	0
Mushasha I	53	0	6	6
Mushasha II	20	0	6	1

The recurrent nature of natural disasters in Burundi has a significant impact on the lives of IDPs as their livelihoods are often closely tied to agriculture. With very little protection from these risks, IDPs have increased vulnerability and needs for humanitarian assistance.

IDPs and agriculture

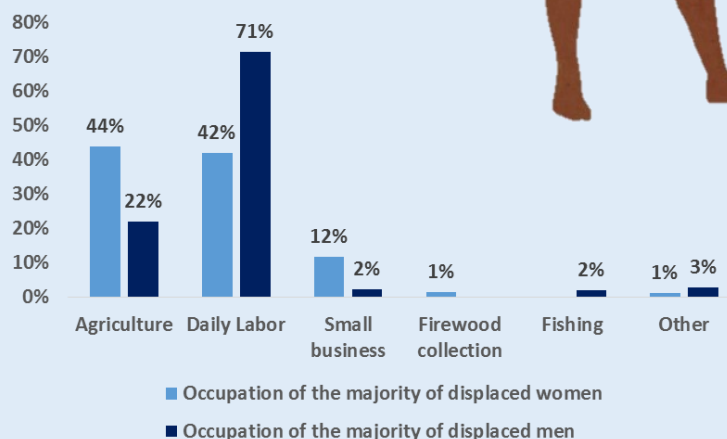
The economy of Burundi is essentially rural, based on agriculture and cattle raising. Agricultural production mostly consists of production of items for export including coffee, tea and cotton, as well as subsistence crops. IDPs, like the remainder of the local population, depend mostly on agriculture but **often lack land for farming**. They subsist on daily work and cultivation on land rented from host communities.

Land represents economic value and security. Access to and utilization of land determine life conditions for the majority of the rural population, and for IDPs in particular. **Only 32% of IDPs have access to arable lands**. In Bururi (76%), Rutana (49%) and Ruyigi (47%) provinces large proportions of IDPs have access to arable lands while the proportion of IDPs with such access is smallest in the provinces of Kirundo and Bujumbura.



Daily labor

Income generating activities and daily labor of IDPs are mostly available in the farming sector. The majority of IDPs survive by selling labor, working in others' fields or providing labor as brick workers. Some IDPs in neighboring provinces to Tanzania, such as Muyinga, Karusi, Cankuzo, Ruyigi, Rutana, Rumonge and Makamba, engage in seasonal trans-border migrations, working in plantations in Tanzania and travelling back at the end of the farming season.



Graph 14: Percentage of collines by occupation of the majority of IDPs, by sex

Daily labor is the main occupation for 71% of displaced men and 42% of displaced women in the country. However in Bujumbura Mairie, very few women perform daily labor as a principal occupation (only 10% of displaced women) as daily labor is limited for women and agriculture work is nearly non-existent. In Bujumbura, IDP women in this province mostly invest in small businesses (76% of displaced women).



Graph 15: Percentage of IDPs having access to arable lands

Income Generating Activities (IGAs) and displaced population vulnerability

Some IDPs work in their own fields and others rent fields to cultivate and benefit from their own harvest, to generate profits. In September 2017, only 22% of displaced men and 44% of women have their own land or are able to rent lands to produce their own harvest. The lack of access to arable lands and the lack of capital for IDPs prevent them from initiating income generating activities and consequently keep them in a situation of permanent food insecurity. **Only 29% of IDPs have access to IGAs.** The agricultural season (Season A) starting in September has contributed to a small increase in the number of IDPs who have access to IGAs during the 3 last months - from 27% in July to 29% in September 2017.

The Kirundo province accounts for a very small percentage of these IDPs during the three last months (7% to 4% respectively) explained by repetitive drought conditions in the province. This decrease is explained by the fact that July and August are characterized by intermittent IGAs which are no longer existent at the beginning of the rainy season in September.

Climatic seasons and harvests

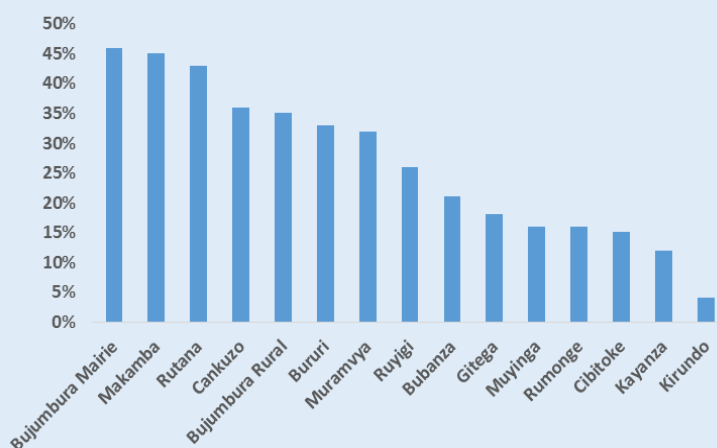
The drought which occurred in the provinces of Kirundo, Bubanza and Cibitoke during the agricultural season B (February to June 2017) caused significant harvest loss of both maize and beans crops. This is a nearly permanent phenomenon in the province of Kirundo since 2015, and the province of Bubanza since last year.



Photo 1: Corn fields destroyed by drought. Province Bubanza, Commune Gihanga © OIM 2017
(Photographer: Francine Munezero)

The province of Bubanza has suffered drought since May 2016, a phenomenon which continues today. The lack of rain pushes IDPs to move to locations on the shore of the Mpanda River in order to use river water for cultivation. **Torrential rains, frequent across the whole country during the rainy season, cause the destruction of crops especially in the north-west and south-east areas of the country.** The drought has impacted the population in general and IDPs in particular, and caused epidemic diseases in September according to health center workers in the province. The province of Rumonge is often victim to landslides at the end of the rainy season due to steep lands that absorb large quantities of water during the season and ultimately collapse.

The insufficient yields are a direct consequence of these disasters, leading to food insecurity for the whole population. These phenomena are the principal motives for displacement in search of food.

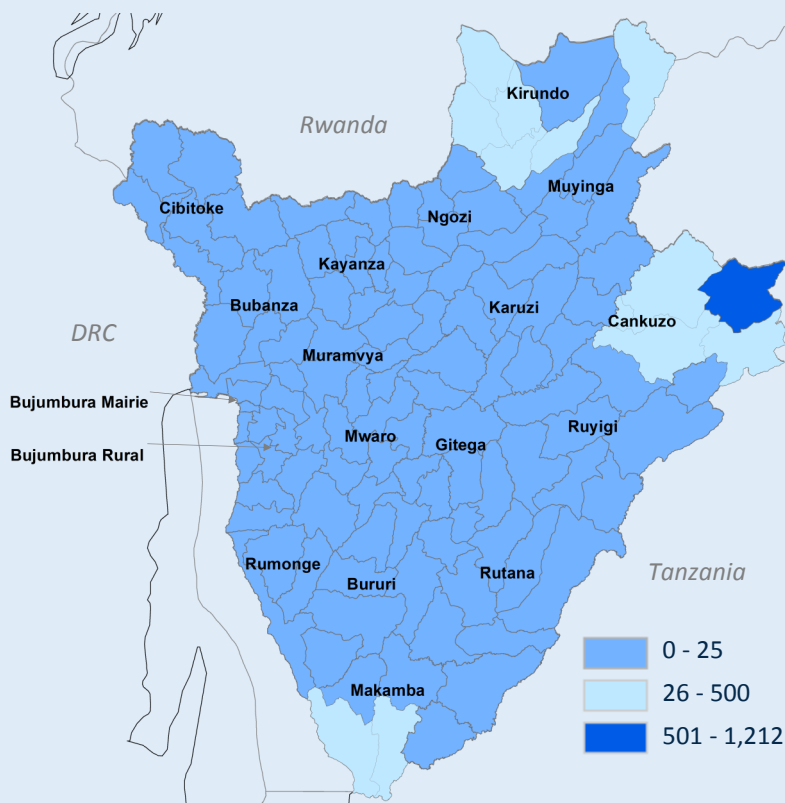


Graph 16: Percentage of IDPs having access to IGRs

New internal displacements during the last two months (August and September) were mainly caused by drought conditions. **In the month of September, natural disasters caused 99% of new displacements of which 78% were caused by drought.**

The large majority of the population displaced by drought originates from the Kirundo province which has been affected by repetitive drought since the second agricultural season in 2015. Drought conditions during the cultural season B when farmers expected large quantities of maize and beans harvest discouraged those who move in search of better life conditions.

The Cankuzo province hosts the largest number of newly displaced persons due to drought with 61% of new displacements in August. The Kirundo province also hosts a large number of newly displaced persons (8% of IDPs in August and 10% of IDPs in September). New internal displacements caused by drought are equally observed in the south of the country in the Makamba province (7% in August and 3% in September). These IDPs originate from the Kirundo and Bubanza provinces.



Map 5: Number of people displaced by drought conditions from June to August 2017, by commune

Natural disasters and food security

The loss of harvests and crops which are often the main source of income for IDPs (especially banana, maize, beans and cassava) leads to food scarcity, resulting in food insecurity. This aggravates IDP vulnerability as market prices increase. **The loss of economic opportunities, a very high dependence on the market while prices increase, and the reduction of purchasing power makes food access difficult for IDP households.** The instability caused by disasters seriously affect vulnerable IDP households which are recurrently exposed to food insecurity and malnutrition. During displacement, there is often risk of loss of active assets (cattle, fields, tools, work material, etc.) as well as cases of urgent harvest sales before harvests are completely mature. Sometimes, harvests are completely abandoned.

(1) Source: Burundi Food Security working group, 2017

Between July to September 2017 in the province of Makamba, 35% of the population are classified in phase 3 of severe food insecurity in the Imbo lowland (West Makamba) and 4% in phase 4 of IPC (Integrated Food Security Classification) during the post-harvest period (July to September 2017). In fact, the impact of the recent poor agricultural season left consequences for which the improved harvests of 2017 B season have not compensated, leading to a weak recovery of food security in the following period. (1)

In the Bubanza province, violent winds have caused significant at the end of September, destroying houses’ roofs, banana plantations and infrastructure. **The long dry season, without rain, has made both seasons unproductive, aggravating the food insecurity situation of IDPs.**

The Cibitoke province has also experienced drought, especially in the Rugombo and Buganda communes since last year. The beginning of the agricultural season A has caused displacement of IDP families to other communes, such as the Mabayi commune since March. Other families have moved to the Democratic Republic of Congo (DRC) after selling roofing from their houses and moveable assets.

Natural disasters, especially torrential rains and violent winds are very severe at the beginning and end of the rainy season (September to May). IDPs attempt to adapt by cultivating crops which have a rapid maturity or by moving to locations judged more economically desirable. **In many areas of the country, floods destroy harvests every year.** Some IDPs who live on flood prone lands have the means to rent farmable lands elsewhere but other IDPs are obliged to continue cultivating on flood prone lands with the risk of harvest loss. Often, repetitive floods push IDPs to abandon their lands, losing their livelihoods.



Photo 2: Fields destroyed by strong winds. Province Bubanza, Commune Rugazi © OIM 2017 (Photographer: Sophie Furaha)

IDP Coping mechanisms in Burundi



After a natural disaster, displaced households have reduced access to livelihoods and food. To confront this food insecurity situation, many IDPs have adopted coping mechanisms which may contribute to worsening their vulnerability. The following coping mechanisms have been identified by DTM data to be employed by IDPs in Burundi, particularly after a natural disaster.



Prolonged migrations

Often, a family or family members move to settle elsewhere to wait for the improvement of life conditions in the area of origin.



Low quality food consumption

Without means to purchase food on the market, many IDPs eat poor quality foods. Cassava is the primary food for IDPs in Burundi but some IDPs are obliged to eat wild fruits and roots. Low quality food contributes to the rampant problem of malnutrition among IDP children in the country.

Sending family members in search of work

Husbands or children of displaced families often move to other areas in search of work while other members of the family remain uncertain about the future. These separations can heighten protection risks for members of the family.



Reducing number of meals

DTM data reveals that IDP families reduce the number of meals consumed per day and adults abstain from eating to allow children to eat. This coping mechanism makes them both physically weak and vulnerable to diseases.



Sale of belongings

IDPs sell non-food items like roofs, cattle, radios, kitchens utensils, and their fields. To prioritise food purchasing, many IDPs remain without any material belongings.

Reduction of non-food expenses

The majority of IDP expenses are food purchases, reducing non-food item expenses like education, clothing, transport, and the purchase of agricultural inputs or equipment. As a result, lack of education and weak agricultural production has been seen to increase poverty.



Dependence on assistance

The dependence of IDPs on assistance can accentuate their vulnerability as continual assistance can discourage IDPs from improving their situations.



School drop-outs

DTM data reveals that many students of displaced households in Burundi drop out of school to work and gain money for their households and others drop out of school due to hunger. Many young displaced girls drop out of school in order to marry, searching for a better life.



Reduced priority to health and hygiene

Facing food insecurity, IDPs do not frequently consult health care institutions when sick due to lack of means. Many IDPs in Burundi do not have adequate latrines but dig simple holes which cause propagation of germs and put their health at risk. Additionally, IDPs often drink from unsafe water sources.



DTM

IOM • OIM

THE UN MIGRATION AGENCY



CONTACT INFORMATION

IOM Burundi, DTMBurundi@iom.int, Tel: +257 75 40 04 48

Facebook: International Organization for Migration – Burundi

Twitter: [@IOM_Burundi](https://twitter.com/IOM_Burundi)



IOM • OIM

