

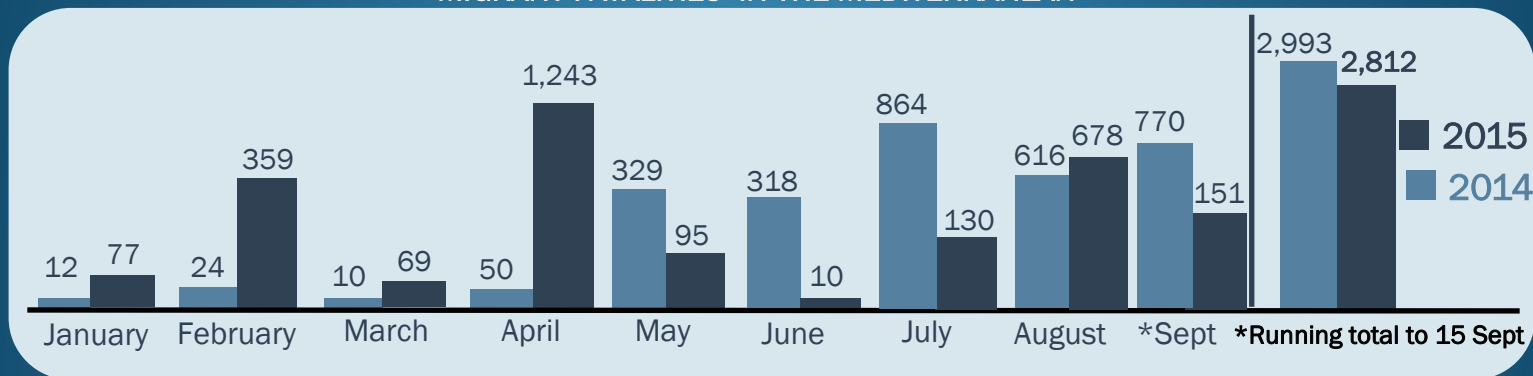


Mediterranean Update

Missing Migrants Project 15 September 2015



MIGRANT FATALITIES IN THE MEDITERRANEAN



MIGRANT MARITIME ARRIVALS 2015

Total Arrivals: (to date) 464,876

Italy	121,619
Greece	340,991
Spain	2,166
Malta	100
Total	464,876

Estimates based on data from respective governments and IOM field offices as of 14/9/15. Data for Greece as of 8/9/15.

TOP FIVE COUNTRIES OF ORIGIN 2015

Destination

Origin Country	Destination	
	Italy	Greece
Eritrea	30,708	Syria 175,375
Nigeria	15,113	Afghanistan 50,177
Somalia	8,790	Pakistan 11,289
Sudan	7,126	Albania 10,985
Syria	6,710	Iraq 9,059

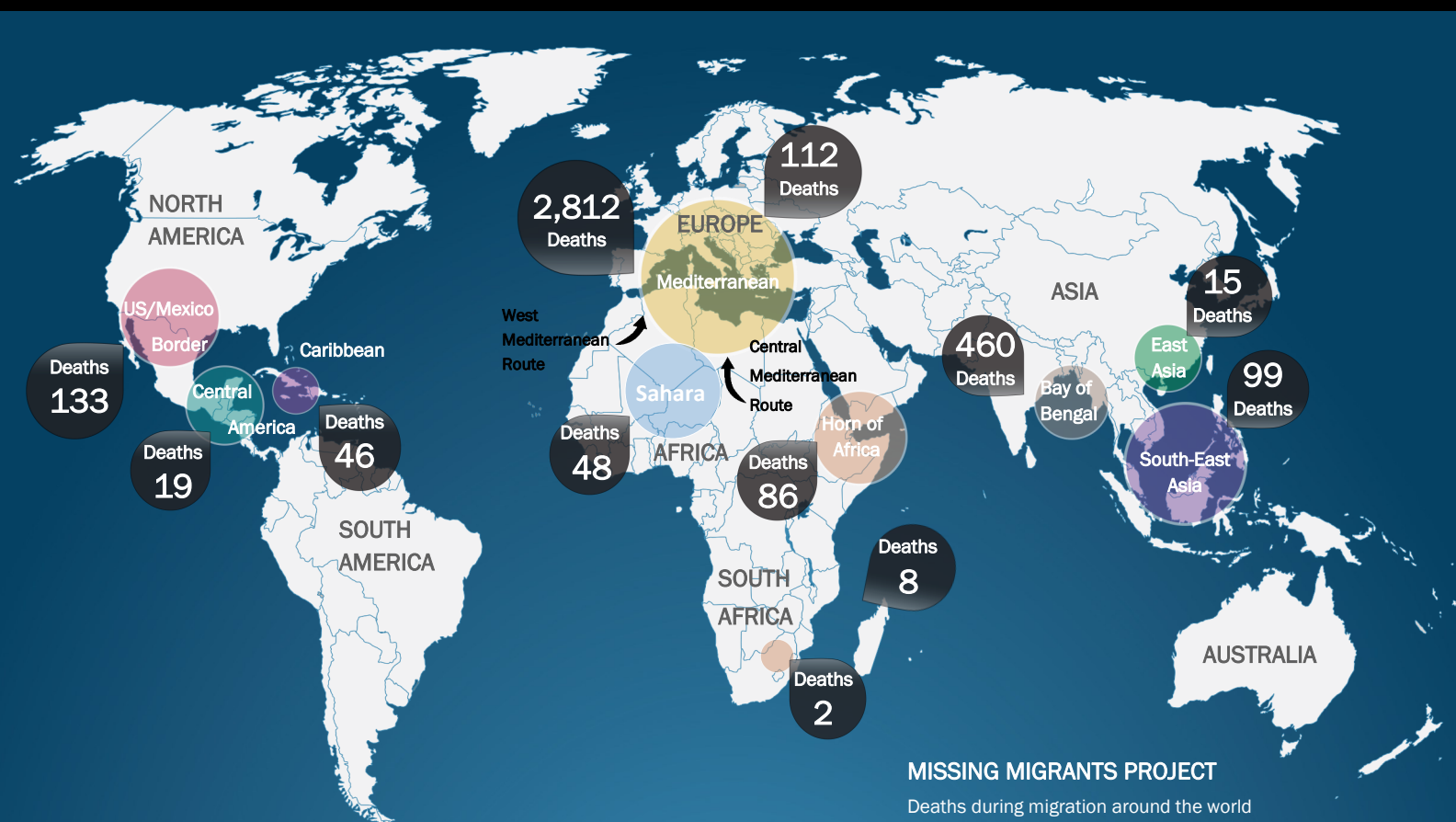
Data for Italy and Greece as of 31/8/15. Data for Greece includes land and sea arrivals. Italy and Greece receive 99% of arrivals in the Mediterranean.

Missing Migrants Project is a Joint Initiative of IOM's Migration Research Division (MRD) and Media and Communications Division (MCD).

#MissingMigrants

MissingMigrants.iom.int

GLOBAL OVERVIEW: 3,840 MIGRANT DEATHS TO DATE IN 2015 (est.)



KEY DATA ON MIGRANT FATALITIES

Missing Migrants Project is the only global database sharing key data on deceased and missing migrants around the world. The aim is to strengthen advocacy and support a more informed policy response.

Deaths between 1 January to 15 September 2015

Regions	Deaths ^a
Mediterranean	2,812
Bay of Bengal	460
US/Mexico Border	133
Horn of Africa	86
Sahara	48
South-East Asia	99
Caribbean	46
Europe ^b	112
East Asia	15
Central America	19
Southeast Africa	8
Southern Africa	2
TOTAL	3,840

SUPPORTING FAMILIES OF MISSING MIGRANTS

Missing Migrants Project empowers families of the missing by providing information and guidance, including on identification of the missing and dead, with the aim of affirming the rights and dignity of migrants and their families.

GLOBAL INFORMATION HUB ON MIGRATION

Missing Migrants Project underlines the global scale of the crisis by sharing key information on migrants dying along migratory routes around the world. The platform also engages feedback from migrants and families of the missing.

Legend:

(a) Figures on deaths are all estimates and refer only to those deaths that are documented. Documented instances potentially depict only a small share of the actual number. Thus, this map represents a base minimum.

(b) Includes deaths in Northern Europe, Southeastern Europe, and Western Europe.

* Data compiled by IOM's Migration Research Division (MRD) and Media and Communications Division (MCD). All numbers are estimates based on data from respective governments and IOM field offices as of 15/9/15.

Missing Migrants Project is a joint initiative of IOM's Migration Research Division (MRD) and Media and Communications Division (MCD).

#MissingMigrants

MissingMigrants.IOM.Int