



© IOM UK

Migrant Integration Planning and Measurement Tools for Evidence-based and Coherent Policies and Programming

Measuring integration outcomes is as complex as the integration process itself. Migrant integration encompasses different dimensions of participation and change that take place across different domains of migrant's life—whether economic, social, cultural, civil or political. The nature, speed and direction of the inclusion processes are affected not only by the characteristics of individuals and their social relations but also by the wider institutional and policy context. Understanding better the inter-related nature of the various dimensions of the integration process and how they intersect and unfold over time is critical for designing and implementing more impactful interventions and policies.

In this edition of the DISC Issue Brief, we are delighted to share with you some practical tools for integration measurement and planning to foster a more comprehensive

approach to integration and social cohesion.

The brief includes resources that aim to provide guidance and tools to identify and measure the key factors that contribute to integration processes, and thereby help organisations at national and local levels designing more effective strategies. The brief also features a survey bank to encourage missions and other integration actors to use verified integration question from more regular data instruments in their baselines assessments, project monitoring and evaluation in order to improve availability and comparability of data on integration.

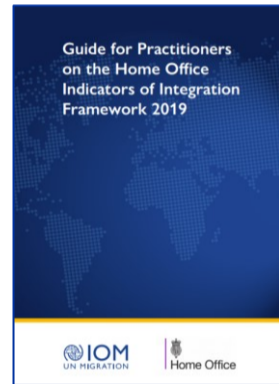
These tools have been developed within the framework of the [IOM Joint Global Initiative on Diversity, Inclusion and Social Cohesion \(DISC Initiative\)](#).

Guide for Practitioners on Local Integration

As part of the DISC Initiative, IOM UK has released the [Guide for Practitioners on the UK Home Office Indicators of Integration \(IOI\) Framework 2019](#), a free-to-access resource that aims to support capacity building of local practitioners and policy makers on migrant integration and social cohesion in line with the UK Government's [IOI Framework](#).

While the IOI framework is a UK-owned framework, the conceptual basis of the framework is applicable to other integration contexts. Treating integration as a multidimensional process involving incoming migrants and diverse communities, the framework consists of multiple measurement domains related to systemic, relational and facilitating factors supporting the integration process.

To complement, the IOM Guide was designed to help integration actors at the local and national levels to identify factors contributing to integration and develop interventions through a Theory of Change approach, using the indicators of the IOI framework.



This guide was a result of a [series of multi-sectoral consultations](#) and blended (face-to-face and online) capacity building trainings conducted with the UK local authorities. The trainings brought together participants from UK local authorities, national government institutions and officers of the Regional Strategic Migration Partnerships (RSMP).

How to use the Guide?

- This Guide should be used side-by-side with the Home Office Indicators of Integration framework documents, as a navigational tool for first time users, to help identify the most helpful parts of the framework according to the area of interests, and to directly consult specific sections of the Indicators of Integration at different stages of policy planning and implementation.
- The Guide can be used individually or by teams, who want to plan or expand existing interventions and to develop professional practice in using the Indicators of Integration for future strategies.

More information [here](#).



Measuring 'Integration and Social Cohesion' Outcomes

In cooperation with the DISC Initiative and the Global Migration Data Analysis Centre (GMDAC), the survey bank was developed to provide an easy access to a wide range of surveys and questions developed around the world in the area of migrant integration and social cohesion.

In particular, it provides access to over 500 questions that have been field tested and validated in various contexts. Integrating those questions in regular data collection or assessment reports/studies allows practitioners and IOM offices to compare their collected data with previous findings from these more widely used and robust statistical instruments.

The survey bank consolidates surveys from government agencies, universities, international and regional organizations, academic researchers and recognized consulting firms.

The Survey Bank is based on a multidimensional understanding of integration. Through its user-friendly and simple format, users can systematically filter the questions by category, integration dimension and source. It also allows users to:

- Learn what instruments and questions already exist to measure migrant integration and social cohesion, as well as finding out how and under which circumstances they have been used.
- Select and download instruments and questions that can be useful for their own studies and measurements of migrant integration and social cohesion, either to use directly or for adaptation to particular contexts.
- Carry out a more comprehensive and informed data analysis of migrant integration and social cohesion data, through an exploration of other measurement tools on these topics, and potential comparison of results.

Access the survey bank [here](#).

The above survey bank also features the Immigration Policy Lab's (IPL) [Integration Index](#) which is currently being piloted as part of operationalizing the DISC Initiative. The IPL Index aims to assess the **capacity** and **knowledge** of migrants in successfully establishing themselves in their host communities to inform interventions, policy formulation, and broader development outcomes.

Through IDF funding, the IPL index has now been adopted in three pilot countries: [Brazil](#), [Dominican Republic](#) and [Peru](#), in partnership with concerned field IOM missions. The tool is used to conduct population-based surveys and causal impact evaluations for IOM project beneficiaries.

Piloting a migrant integration index in LAC region

Now called the IPL/IOM Migrant Integration Index, the tool captures the multi-dimensional nature of the whole integration process that could be applied to different migrant categories, as well as over time. The tool looks into migrants' economic, social, political, linguistic, and psychological capacities and knowledge to integrate.

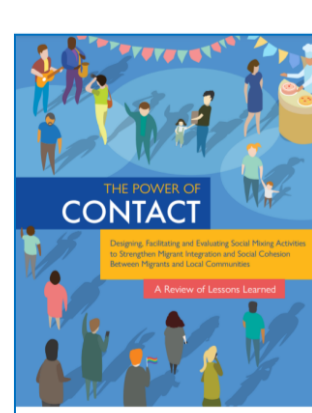


Evaluating 'social mixing' activities for integration

The DISC Initiative recently released the publication, [The Power of Contact: Social Mixing Activities to Strengthen Migrant Integration and Social Cohesion Between Migrants and Local Communities](#). This guidance note aims to provide project managers and developers, as well as event organizers and facilitators, with guidance in fostering migrant integration and social cohesion through social mixing activities.

A significant part of the publication is on monitoring and evaluating these activities to ensure a results-focused programming, and provide government officials, IOM staff, partners, donors and civil society with better means to informed decision making, and lessons learned.

The publication provides recommendations on monitoring and evaluation, as well as several case studies on how assessments can be embedded in IOM programming.



To improve project implementation and ensure desired results in social mixing interventions, the publication highlights the importance of integrating both monitoring and evaluation during intervention design, implementation and completion.

About the DISC Initiative

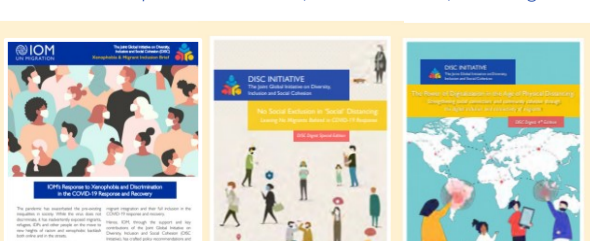


The [DISC Initiative](#) is a flexible, demand-led and multi-phase initiative, which aims to elevate IOM's capacity and programming to support IOM offices and missions, Member States and relevant partners in the areas of social cohesion, migrant integration and inclusion. The DISC Initiative serves as a global platform to share, learn, develop and implement innovative strategies and interventions in these areas.

For any questions / concerns, please contact: Jobst Koehler (ikoehler@iom.int) and Ace Dela Cruz (acedelacruz@iom.int)

Email: disc@iom.int | SharePoint: [DISC Collaboration Space](#) | IOM Website: iom.int/migrant-training-and-integration

Checkout our previous editions of DISC Issue Briefs and Digests!



Disclaimer: The opinions expressed in this document are those of the author and do not necessarily reflect the views of the International Organization for Migration (IOM).