



IOM International Organization for Migration
OIM Organisation Internationale pour les Migrations
OIM Organización Internacional para las Migraciones
[insert Mission Address]

REQUEST FOR QUOTATIONS (RFQ) AND GENERAL INSTRUCTION TO SUPPLIERS (GIS)¹

Date : 06 April 2022

The International Organization for Migration (**IOM**) is an intergovernmental organization established in 1951 and is committed to the principle that humane and orderly migration benefits both migrants and society.

In the framework of *Typhoon Wutip Reconstruction Project*, the IOM invites interested eligible Suppliers to submit Quotations for the supply and delivery of *construction materials to Weno, Chuuk, Federated States of Micronesia*.

With this RFQ is the GIS which include the Instructions to Suppliers, Technical Specifications and administrative requirements that Suppliers will need to follow in order to prepare and submit their quotation for consideration by IOM.

IOM reserves the right to accept or reject any quotation, and to cancel the procurement process and reject all quotations at any time prior to award of Purchase Order or Contract, without thereby incurring any liability to the affected Supplier/s or any obligation to inform the affected Supplier/s of the ground for IOM's action.

Very truly yours,

Salvatore Sortino
COM

IOM is encouraging companies to use recycled materials or materials coming from sustainable resources or produced using a technology that has lower ecological footprints.

GENERAL INSTRUCTION TO SUPPLIERS (GIS)

1. Description of Goods

IOM request prospective suppliers to submit quotation to supply construction materials to build 40 New Houses and Reconstruction of 5 Public Infrastructure and Utilities in outer islands in Chuuk, FSM.

2. Corrupt, Fraudulent, and Coercive Practices

IOM requires that all IOM Staff, manufacturers, suppliers or distributors, observe the highest standard of ethics during the procurement and execution of all contracts. IOM shall reject any proposal put forward by Suppliers, or where applicable, terminate their contract, if it is determined that they have engaged in corrupt, fraudulent, collusive or coercive practices. In pursuance of this policy, IOM defines for purposes of this paragraph the terms set forth below as follows:

- Corrupt practice means the offering, giving, receiving or soliciting, directly or indirectly, of any thing of value to influence the action of the Procuring/Contracting Entity in the procurement process or in contract execution;
- Fraudulent practice is any act or omission, including a misrepresentation, that knowingly or recklessly misleads, or attempts to mislead, the Procuring/Contracting Entity in the procurement process or the execution of a contract, to obtain a financial gain or other benefit to avoid an obligation;
- Collusive practice is an undisclosed arrangement between two or more bidders designed to artificially alter the results of the tender procedure to obtain a financial gain or other benefit;
- Coercive practice is impairing or harming, or threatening to impair or harm, directly or indirectly, any participant in the tender process to influence improperly its activities in a procurement process, or affect the execution of a contract

3. Conflict of Interest

All Suppliers found to have conflicting interests shall be disqualified to participate in the procurement at hand. A Supplier may be considered to have conflicting interest under any of the circumstances set forth below:

- A Supplier has controlling shareholders in common with another Supplier;
- A Supplier receives or has received any direct or indirect subsidy from another Supplier;
- A Supplier has the same representative as that of another Supplier for purposes of this quotation;

- A Supplier has a relationship, directly or through third parties, that puts them in a position to have access to information about or influence on the Quotation of another or influence the decisions of the Mission/Procuring Entity regarding this quotation process;
- A Supplier submits more than one Quotation in this Quotation process;
- A Supplier who participated as a consultant in the preparation of the design or technical specifications of the Goods and related services that are subject of this quotation process.

4. Eligible Suppliers

Only Suppliers that are determined to be qualified shall be considered for award. The Supplier shall fill up and submit the standard IOM Vendor Information Sheet (VIS) (Annex D) to establish their eligibility together with the Quotation.

5. Cost of Preparing the Quotation

The Supplier shall bear all costs associated with the preparation and submission of his Quotation and IOM will not in any case be responsible and liable for the costs incurred.

6. Errors, omissions, inaccuracies and clarifications

The documents and forms requested for the purpose of soliciting Quotations shall form part of the Contract; hence care should be taken in completing these documents.

Suppliers shall not be entitled to base any claims on errors, omissions, or inaccuracies made in the Quotation Documents.

IOM will respond to any request for clarification received on or before 18 May 2020. Copies of the response including description of the clarification will be given to all Suppliers who received this General Instruction, without identifying the source of the inquiry.

7. Confidentiality and Non-Disclosure

All information given in writing to or verbally shared with the Supplier in connection with this General Instruction is to be treated as strictly confidential. The Supplier shall not share or invoke such information to any third party without the prior written approval of IOM. This obligation shall continue after the procurement process has been completed whether or not the Supplier is successful.

8. IOM's Right to Accept any Quotation and to Reject any and all Quotations

IOM reserves the right to accept or reject any Quotation, and to cancel the procurement process and reject all Quotations, at any time prior to award of contract, without thereby incurring any liability to the affected Supplier/s or any obligation to inform the affected Supplier/s of the ground for IOM's action.

9. Requirements

9.1 Quotation Documents

The following shall constitute the Quotation Documents to be submitted by the Suppliers:

- a.) Quotation Form (Annex A)
- b.) Bill of Quantity with Technical Specification (Annexes B1 and B2)
- c.) Vendor Information Sheet (Annex C) – (for new vendor only)
- e.) Proforma Contract ² or PO Standard Terms and Conditions (Annex D)

Suppliers are required to use the forms provided as Annexes in this document.

9.2 Quotation Form

The Quotation Form (Annex A) and other required documents shall be duly signed and accomplished and typewritten or written in indelible ink. Any correction made to the prices, rates or to any other information shall be rewritten in indelible ink and initialed by the person signing the Quotation Form.

The language of the Quotation shall be in English and prices shall be quoted in [United States Dollars \(USD\)](#), exclusive of VAT.

Prices quoted by the Supplier shall be fixed during Supplier performance of the contract and not subject to price escalation and variation on any account, unless otherwise approved by IOM. A submitted quotation with an adjustable price quotation will be treated as nonresponsive and will be rejected.

9.3 Validity of Quotation Price

The Quotation shall remain valid for a minimum period of [ninety \(90\) days](#), after the deadline for submission.

In exceptional circumstances, prior to expiry of the period of validity of quotations, IOM may request that the Suppliers extend the period of validity for a specified additional period. The request and the response there to shall be made in writing. A supplier agreeing to the request will not be required or permitted to modify its quotation.

9.4 Documents Establishing Supplier's Eligibility and Qualification

The Supplier shall furnish, as part of its Quotation, documents establishing the Supplier's eligibility to submit Quotation and its qualifications to perform the contract if its Quotation is accepted. The IOM's standard Vendors Information Sheet (Annex D) shall be used for this purpose.

² If applicable in lieu of Purchase Order.

In the case of a Supplier not doing business within the Mission's country, the Supplier is or will be (if awarded the contract) represented by an Agent in that country equipped, and be able to carry out the Supplier's maintenance, repair and spare parts-stocking obligations prescribed in the Conditions of Contract and/or Technical Specifications *[include this clause only if relevant-usually for high value equipment]*.

10. Submission of Quotation Documents

Quotation must be submitted by email to skushchak@iom.int and sshrestha@iom.int or in a sealed envelope and hand delivered to Pohnpei Office with subject 'Construction materials for 40 New Houses and Reconstruction of 5 Public Infrastructure and Utilities in outer islands in Chuuk, FSM' to:

IOM Pohnpei Office
Suite 2G, Pohn Umpomp Building
Pohn Umpomp Place, Nett Municipality

Bids must be submitted on or before **06 May 2022** before 1600 hours Pohnpei time. Late³ Quotations will not be accepted.

11. Opening of Quotations.

At the indicated time and place, the opening of Quotations shall be carried out by IOM in the presence of the Contractors who wish to attend. IOM reserve the right to conduct opening of Quotations in public or not.

12. Acceptance of Quotations.

IOM is not bound to take an immediate decision on the acceptability or unacceptability of Quotations at the time of their opening.

13. Rejection of Quotations

Quotation can be rejected for the following reasons:

- (a) the Quotation is not presented in accordance with this General Instruction;
- (b) the Quotation Form or any document which is part of the Quotation Document is not signed;
- (d) the Supplier is currently under list of blacklisted suppliers;
- (e) the Supplier offer imposes certain basic conditions unacceptable to IOM
- (f) the offered price is above the approved budget.

IOM is not bound to accept any offer received and reserves the right to waive any minor defect in an offer, provided, however, that such minor defect (i) does not modify the substance of the offer and (ii) does not change the relative ranking of the Suppliers.

³ Quotation delivered beyond the prescribed date and time shall be considered late, the envelope shall be immediately returned to the Supplier unopened. The date and time of submission of the Quotation shall be recorded. A quotation submission log shall be prepared for the purpose.

14. Evaluation of Quotations

IOM shall evaluate and compare the Quotations on the basis of the following:

- (a) Completeness and responsiveness of the documents mentioned in 9.1
- (b) Compliance with technical specifications including delivery requirement
- (c) Price

Arithmetical errors will be corrected on the following basis. If there is a discrepancy between the unit price and the total price that is obtained by multiplying the unit price and quantity, the unit price shall prevail, and the total price shall be corrected. If the Supplier does not accept the correction of the errors, its Quotation will be rejected. If there is a discrepancy between words and figures, the amount in words will prevail.

15. Post Qualification

Prior to award, post-qualification will be carried out by IOM to further determine the selected Supplier's technical and financial capability to perform the contract. IOM shall verify and validate any documents/information submitted and shall conduct ocular inspection of the office, plant and equipment.

16. Award of Contract

The Supplier that has submitted the lowest evaluated Price, substantially responsive to the requirements of this General Instruction and who has been determined to be qualified to perform the contract shall be selected and awarded the contract.

IOM shall notify the selected Supplier through a Notice of Award. IOM shall also notify in writing, the other Suppliers who were not selected without disclosing the reason for rejection.

17. Delivery Site and Period of Delivery

The goods should be delivered at the following delivery site/s: Weno, Chuuk, Federated States of Micronesia.

18. Liquidated Damages

If the Supplier fails to deliver any or all of the goods within the period specified in Clause 17 above, a penalty payment of 0.1% of the price of the undelivered goods for every day of breach of the delivery schedule by the Supplier will be requested.

19. Payment

Payment shall be made only upon IOM's acceptance of the goods, and upon IOM's receipt of invoice describing the goods delivered⁴.

⁴ Insert conditions if progress payment is allowed

IOM may grant an advance payment equivalent to maximum of *10%* of the Contract Amount upon submission of a claim and a Bank Guarantee for the equivalent amount valid until the goods are delivered and in the form provided in Annex E. The bank guarantee may be waived if the advanced amount is less than USD Ten Thousand Dollars (USD10,000).

20. Warranty

Warranty shall be quoted based on the standard warranties provided by the manufacturer unless specified in the Technical Specifications of this General Instruction. A Warranty Certificate shall be provided by the Supplier.

21. Settlement of Dispute

The United Nations Commission on International Trade Law (UNCITRAL) arbitration rules will apply for any dispute, controversy or claim that will arise in relation to the procurement process.

QUOTATION FORM

Date : _____

To : _____

Having examined the General Instruction for the Supply and Delivery Construction materials for 40 New Houses and Reconstruction of 5 Public Infrastructure and Utilities in outer islands in Chuuk, FSM. The receipt of which is hereby duly acknowledge, I, representing *[name of company]* offer to supply and deliver the requested goods in conformity with the General Instruction for the total amount of total

United States Dollars (in words and figures) in accordance with the Price Schedule (Annex B) which is herewith attached and form part of this Quotation.

I undertake if my offer is accepted, to deliver the goods in accordance with the delivery schedule set out in the Price Schedule.

I agree to abide by this Quotation for the Validity Period specified in the General Instruction which may be accepted at any time before the expiration of that period.

Until a formal contract is prepared and executed, this Quotation Form, together with your Notice of Award shall constitute a binding agreement between us.

I hereby certify that this Quotation complies with the requirements stipulated in the General Instruction.

Dated this _____ day of _____ 20_____.

[signature over printed name]

[in the capacity of]

Duly authorized to sign Quotation for and on behalf of
_____ *[name of company]*

PROJECT : Wutip (TWRP) New House Materials

Annex B1

DATE : 05 April 2022

TO
ORDER : 40 NH Units

Option 1: Construction materials shall be grouped and packed per each house

ITEM #	QTY per 1 NH	UNIT	DESCRIPTION	UNIT PRICE	TOTAL COST
--------	--------------------	------	-------------	------------	------------

A. LUMBER - all wood to be treated as specified

FOUNDATION & FLOOR (treatment : UC4B / H5 or higher for ground contact with frequent wet conditions)

Douglas Fir, #2 & Better Home Center Select Grade, Pressure

Treated With **CA-C** To a .31 Lbs / CF Retention Or Refusal With

Incisions. Conforms With UC4B/H5 Guidelines

1	2	ea	4"x 4" x 16'-0" Douglas-Fir PT #2 Lumber		
2	2	ea	2"x 10" x 16'-0" Douglas-Fir PT #2 Lumber		
3	29	ea	2"x 8" x 16'-0" Douglas-Fir PT #2 Lumber		

WALL FRAMING, WINDOWS, DOORS, TRUSSES, PURLINS, CEILING (treatment : UC3B / H3.2 or higher)

Douglas Fir, #2 & Better Home Center Select Grade, Pressure

Treated With **CA-C** To a .06 Lbs / CF Retention Or Refusal W/incisions

No Incise on 2 x2 & 1 x lumbars. Conforms With UC3B/H3.2 Guidelines

4	135	ea	2"x 4" x 16'-0" Douglas-Fir #2 PT Lumber		
5	21	ea	2"x 2" x 16'-0" Douglas-Fir #2 PT Lumber		
6	8	ea	1" x 6" x 16'-0" Douglas-Fir #2 PT Lumber		
7	2	ea	1"x 4" x 16'-0" Douglas-Fir #2 PT Lumber		
8	9	ea	1"x 2" x 16'-0" Douglas-Fir #2 PT Lumber		
8a	24	ea	1"x 1" x 8'-0" Douglas-Fir #2 PT Lumber		

FLOORING, SIDING, GUSSETS (treatment : UC3B / H3.2 or higher)

Douglas Fir Plywood, Pressure Treated With **CA-C**

9	10	ea	3/4" thk. 4'x8' PT BCX Plywood (for flooring)		
10	20	ea	5/8" thk. x 4' x 8' PT T-1-11 Plywood (4" groove spacing)		
11	11	ea	Gusset & Form Plywood: P.T. 1/2" CDX (exterior grade)		

HARDWARE MATERIALS - all hardware and fasteners to be stainless steel or hot-dip galvanized

12	50	bags	Quikrete Concrete Mix Product No. 1101, 80 lb bags		
13	24	ea	2"x16"x1/4" thk. HDG Flat Bar post strap w/holes per drawing detail		
14	24	ea	1/2" dia.x 5-1/2" long Machine Bolt, HDG, with 1 ea Nut & 2 ea Flat Washer		
15	24	ea	5/8" dia.x 7-1/2" long Machine Bolt, HDG, with 1 ea Nut & 2 ea Flat Washer		
16	6	ea	# 3 Deformed Bar x 20'-0", grade 40, epoxy coated		
17	15	ea	# 4 Deformed Bar x 20'-0", grade 40, epoxy coated		
18	20	rolls	Tie Wire, gauge #16, 2-1/2lb rolls		
19	24	ea	Simpson Strong-Tie DJT14Z Deck Joist Tie		
20	56	ea	Simpson Strong-Tie H10ASS Hurricane Tie		
21	16	ea	Simpson Strong-Tie H8SS Hurricane Tie		

22	14	ea	Simpson Strong-Tie LUS28SS Joist Hanger		
23	7	ea	CS16SS Coil Strap x 25' roll		
24	140	ea	Simpson Strong-Tie H2.5SS Hurricane Tie		
25	16	ea	Simpson Strong-Tie A34SS Framing Angle		
26	6	rolls	0.31" Reflectix Roof Insulation, 4ft. x 25ft.		
27	100	ea	2-1/2" SDS 25212 Wood Screw		
28	40	lbs	8d Nails x 2-1/2" long, HDG		
29	10	lbs	8d Nails x 1-1/2" long, HDG		
30	15	lbs	10d Nails x 3" long, HDG		
31	36	lbs	16d Nails x 3-1/2" long, HDG		
32	6	lbs	SSNA10 Nails x 1-1/2" long (Ring-Shank type)		
33	13	lbs	SSA8d Nails x 2-1/2" long (Ring-Shank type)		
34	14	lbs	SSNA8 Nails x 1-1/2" long (Ring-Shank type)		
35	6	ea	4" Stainless Steel Hinge Loose Pin		
36	12	ea	3-1/2" x 3-1/2" Stainless Steel Hinge		
37	8	ea	Barrel Bolt, 4" Heavy Duty Stainless Steel		
38	2	ea	Door Pull, Stainless Steel		
38a	1	pk	3-1/2 in. x 5/8 in. Radius Satin Nickel Hinge (12 per Pack)		
38b	6	ea	2-1/2" Stainless Steel Hook and Eye		
38c	2	lbs	#15 x 1-1/2 in. 4-Penny Hot-Galvanized Steel Nails		
38d	2	roll	48" x 25' long Fiberglass Insect Screen		

ROOFING and WATER CATCHMENT MATERIALS

NOTE: Supplier can quote on different brand of Roofing Panels and accessories as long as their quality is equivalent to or greater in product specifications as listed

39	20	ea	Ga. 26 Corrugated Roofing Panel x 11'-0" long with a Silicone Modified Polyester Painted Finish, "Ocean Blue" Color, Approx. 34" Wide (32" Coverage)		
40	3	ea	Ga. 26 Ridge Cap x 96" Long with a Silicone Modified Polyester Painted Finish, "Ocean Blue" Color		
41	5	ea	5" K-Style Vinyl Gutter x 10' long		
42	4	ea	5" K-Style Vinyl End Cap (2ea for Left end & 2ea Right end)		
43	24	ea	5" K-Style Gutter Hanger w/ clip, #40 Galvanized; see drawing		
44	450	ea	2-1/2" Long Umbrella Head, HDG Roofing Nails with a Twisted Shank, Rubber Seal Washer		
45	4	ea	5" Slip Joint Connector for K style Gutter, Vinyl		
46	2	ea	PVC Gutter End 2" x 3" drop w/ adapter for 3" PVC Pipe		
47	6	ea	3" 2-Hole Pipe Strap G.I.		
48	2	ea	Roof Gutter Strainer or Drain round wire or dome type .		
48a	5	ea	4" x 5" x 122" Long, Ga. 26 Galvanized Rake with a Silicone Modified Polyester Painted Fin., "Ocean Blue" Color (Compatible with Roof Panel)		
48b	15	ea	Horizontal Foam Closure Strip x 36" L (Compatible with Roof Panel)		
49	100	ea	1/8" x 1/2" SS Blind Rivets		
50	2	tubes	Flashing Roof Gutter Caulk, 10.1 oz. tube		
51	3	ea	3" dia. x 20ft PVC Pipe, Sched. 40		
52	4	ea	3" dia. x 90 deg. PVC Bend S40		
53	1	ea	3" dia. PVC Tee S40		
53a	2	sets	First Flush Diverter Kit, 3"		
54	1	ea	Oatey PVC Primer, 8 oz.		
55	1	ea	Oatey PVC Cement, 8 oz.		
56	1	ea	1,600 gal. Polyethylene Water Tank with Lid, food grade, stackable		
57	1	ea	3/4" PVC Pipe x 10 ft sched. 40		
58	1	ea	3/4" PVC Union S40		
59	1	ea	3/4" PVC Ball Valve		
60	2	ea	3/4" PVC 90 deg Bend S40		
61	1	ea	3/4" HB Faucet, Brass		
62	1	ea	3/4" Female Adapter, Sch 40		

PAINTS

63	3	gals	Rodda Unique II Semi-Gloss Enamel Paint, interior/exterior, Light Color (upper)		
63a	2	gals	Rodda Unique II Semi-Gloss Enamel Paint, interior/exterior, Dark Color (lower)		
64	2	gals	Rodda Prime Solution Int./ Ext. Primer Paint		
65	2	sets	6" Paint Roller complete with Pan		
66	2	ea	Paint brush 4"		
67	2	ea	Paint brush 2"		
68	2	rolls	ProMask Blue Painter's Tape		
69	1	gal	Copper-Green Wood Preservative		
SUB-TOTAL A = \$					

ITEM #	QTY per 1 NH	UNIT	DESCRIPTION	UNIT PRICE	TOTAL COST
--------	--------------------	------	-------------	------------	------------

B. REPLACEMENT FOR ELECTRICAL MATERIALS

1	1	Set	5-Way Powered 5000mAh Solar Hand Crank NOAA Weather Radio & Solar Hand Crank Camping Lantern for Outdoors, Portable Flashlight, Rechargeable Lantern for Emergency		
SUB-TOTAL B = \$					

① TOTAL A + B (CIF CHUUK) = \$

TOTAL FOR 40 HOUSES ① x 40 (CIF CHUUK) = \$

NOTES :

1. CIF Weno, Chuuk Port
2. All lumbers and plywoods shall be CA-C treated (not CCA).

PROJECT : Wutip (TWRP) New House Materials
DATE : 05 April 2022
TO ORDER : 40 NH Units

Option 2: Construction materials shall NOT be packed and grouped per each house

ITEM #	QTY per 1 NH	UNIT	DESCRIPTION	UNIT PRICE	FOR 40 UNITS	
					Total QTY	TOTAL COST
A. LUMBER - all wood to be treated as specified						

FOUNDATION & FLOOR (treatment : UC4B / H5 or higher for ground contact with frequent wet conditions)

Douglas Fir, #2 & Better Home Center Select Grade, Pressure
Treated With CA-C To a .31 Lbs / CF Retention Or Refusal With
Incisions. Conforms With UC4B/H5 Guidelines

1	2	ea	4"x 4" x 16'-0" Douglas-Fir PT #2 Lumber		80	
2	2	ea	2"x 10" x 16'-0" Douglas-Fir PT #2 Lumber		80	
3	29	ea	2"x 8" x 16'-0" Douglas-Fir PT #2 Lumber		1160	

WALL FRAMING, WINDOWS, DOORS, TRUSSES, PURLINS, CEILING (treatment : UC3B / H3.2 or higher)

Douglas Fir, #2 & Better Home Center Select Grade, Pressure
Treated With CA-C To a .06 Lbs / CF Retention Or Refusal W/incisions
No Incise on 2 x2 & 1 x lumbars. Conforms With UC3B/H3.2 Guidelines

4	135	ea	2"x 4" x 16'-0" Douglas-Fir #2 PT Lumber		5400	
5	21	ea	2"x 2" x 16'-0" Douglas-Fir #2 PT Lumber		840	
6	8	ea	1" x 6" x 16'-0" Douglas-Fir #2 PT Lumber		320	
7	2	ea	1"x 4" x 16'-0" Douglas-Fir #2 PT Lumber		80	
8	9	ea	1"x 2" x 16'-0" Douglas-Fir #2 PT Lumber		360	
8a	24	ea	1"x 1" x 8'-0" Douglas-Fir #2 PT Lumber		960	

FLOORING, SIDING, GUSSETS (treatment : UC3B / H3.2 or higher)

Douglas Fir Plywood, Pressure Treated With CA-C

9	10	ea	3/4" thk. 4'x8' PT BCX Plywood (for flooring)		400	
10	20	ea	5/8" thk. x 4' x 8' PT T-1-11 Plywood (4" groove spacing)		800	
11	11	ea	Gusset & Form Plywood: P.T. 1/2" CDX (exterior grade)		440	

HARDWARE MATERIALS - all hardware and fasteners to be stainless steel or hot-dip galvanized

12	50	bags	Quikrete Concrete Mix Product No. 1101, 80 lb bags		2000	
13	24	ea	2"x16"x1/4" thk. HDG Flat Bar post strap w/holes per drawing detail		960	
14	24	ea	1/2" dia.x 5-1/2" long Machine Bolt, HDG, with 1 ea Nut & 2 ea Flat Washer		960	
15	24	ea	5/8" dia.x 7-1/2" long Machine Bolt, HDG, with 1 ea Nut & 2 ea Flat Washer		960	
16	6	ea	# 3 Deformed Bar x 20'-0", grade 40, epoxy coated		240	
17	15	ea	# 4 Deformed Bar x 20'-0", grade 40, epoxy coated		600	
18	20	rolls	Tie Wire, gauge #16, 2-1/2lb rolls		800	
19	24	ea	Simpson Strong-Tie DJT14Z Deck Joist Tie		960	
20	56	ea	Simpson Strong-Tie H10ASS Hurricane Tie		2240	
21	16	ea	Simpson Strong-Tie H8SS Hurricane Tie		640	
22	14	ea	Simpson Strong-Tie LUS28SS Joist Hanger		560	
23	7	ea	CS16SS Coil Strap x 25' roll		280	
24	140	ea	Simpson Strong-Tie H2.5SS Hurricane Tie		5600	
25	16	ea	Simpson Strong-Tie A34SS Framing Angle		640	
26	6	rolls	0.31" Reflectix Roof Insulation, 4ft. x 25ft.		240	
27	100	ea	2-1/2" SDS 25212 Wood Screw		4000	
28	40	lbs	8d Nails x 2-1/2" long, HDG		1600	
29	10	lbs	8d Nails x 1-1/2" long, HDG		400	
30	15	lbs	10d Nails x 3" long, HDG		600	
31	36	lbs	16d Nails x 3-1/2" long, HDG		1440	
32	6	lbs	SSNA10 Nails x 1-1/2" long (Ring-Shank type)		240	

33	13	lbs	SSA8d Nails x 2-1/2" long (Ring-Shank type)		520	
34	14	lbs	SSNA8 Nails x 1-1/2" long (Ring-Shank type)		560	
35	6	ea	4" Stainless Steel Hinge Loose Pin		240	
36	12	ea	3-1/2" x 3-1/2" Stainless Steel Hinge		480	
37	8	ea	Barrel Bolt, 4" Heavy Duty Stainless Steel		320	
38	2	ea	Door Pull, Stainless Steel		80	
38a	1	pk	3-1/2 in. x 5/8 in. Radius Satin Nickel Hinge (12 per Pack)		40	
38b	6	ea	2-1/2" Stainless Steel Hook and Eye		240	
38c	2	lbs	#15 x 1-1/2 in. 4-Penny Hot-Galvanized Steel Nails		80	
38d	2	roll	48" x 25' long Fiberglass Insect Screen		80	

ROOFING and WATER CATCHMENT MATERIALS

NOTE: Supplier can quote on different brand of Roofing Panels and accessories as long as their quality is equivalent to or greater in product specifications as listed

39	20	ea	Ga. 26 Corrugated Roofing Panel x 11'-0" long with a Silicone Modified Polyester Painted Finish, "Ocean Blue" Color, Aprrox. 34" Wide (32" Coverage)		800	
40	3	ea	Ga. 26 Ridge Cap x 96" Long with a Silicone Modified Polyester Painted Finish, "Ocean Blue" Color		120	
41	5	ea	5" K-Style Vinyl Gutter x 10' long		200	
42	4	ea	5" K-Style Vinyl End Cap (2ea for Left end & 2ea Right end)		160	
43	24	ea	5" K-Style Gutter Hanger w/ clip, #40 Galvanized; see drawing		960	
44	450	ea	2-1/2" Long Umbrella Head, HDG Roofing Nails with a Twisted Shank, Rubber Seal Washer		18000	
45	4	ea	5" Slip Joint Connector for K style Gutter, Vinyl		160	
46	2	ea	PVC Gutter End 2" x 3" drop w/ adapter for 3" PVC Pipe		80	
47	6	ea	3" 2-Hole Pipe Strap G.I.		240	
48	2	ea	Roof Gutter Strainer or Drain round wire or dome type .		80	
48a	5	ea	4" x 5" x 122" Long, Ga. 26 Galvanized Rake with a Silicone Modified Polyester Painted Fin., "Ocean Blue" Color (Compatible with Roof Panel)		200	
48b	15	ea	Horizontal Foam Closure Strip x 36" L (Compatible with Roof Panel)		600	
49	100	ea	1/8" x 1/2" SS Blind Rivets		4000	
50	2	tubes	Flashing Roof Gutter Caulk, 10.1 oz. tube		80	
51	3	ea	3" dia. x 20ft PVC Pipe, Sched. 40		120	
52	4	ea	3" dia. x 90 deg. PVC Bend S40		160	
53	1	ea	3" dia. PVC Tee S40		40	
53a	2	sets	First Flush Diverter Kit, 3"		80	
54	1	ea	Oatey PVC Primer, 8 oz.		40	
55	1	ea	Oatey PVC Cement, 8 oz.		40	
56	1	ea	1,600 gal. Polyethylene Water Tank with Lid, food grade, stackable		40	
57	1	ea	3/4" PVC Pipe x 10 ft sched. 40		40	
58	1	ea	3/4" PVC Union S40		40	
59	1	ea	3/4" PVC Ball Valve		40	
60	2	ea	3/4" PVC 90 deg Bend S40		80	
61	1	ea	3/4" HB Faucet, Brass		40	
62	1	ea	3/4" Female Adapter, Sch 40		40	

PAINTS

63	3	gals	Rodda Unique II Semi-Gloss Enamel Paint, interior/exterior, Light Color (upper)		120	
63a	2	gals	Rodda Unique II Semi-Gloss Enamel Paint, interior/exterior, Dark Color (lower)		80	
64	2	gals	Rodda Prime Solution Int./ Ext. Primer Paint		80	
65	2	sets	6" Paint Roller complete with Pan		80	
66	2	ea	Paint brush 4"		80	
67	2	ea	Paint brush 2"		80	
68	2	rolls	ProMask Blue Painter's Tape		80	
69	1	gal	Copper-Green Wood Preservative		40	
SUB-TOTAL A = \$						

ITEM #	QTY per 1 NH	UNIT	DESCRIPTION	UNIT PRICE	FOR 40 UNITS	
					Total QTY	TOTAL COST

B. REPLACEMENT FOR ELECTRICAL MATERIALS

1	1	Set	5-Way Powered 5000mAh Solar Hand Crank NOAA Weather Radio & Solar Hand Crank Camping Lantern for Outdoors, Portable Flashlight, Rechargeable Lantern for Emergency		40	
SUB-TOTAL B = \$						

TOTAL A + B (CIF CHUUK) = \$						
------------------------------	--	--	--	--	--	--

- NOTES :**
- 1. CIF Weno, Chuuk Port
 - 2. All lumbers and plywoods shall be CA-C treated (not CCA).

Construction materials shall be grouped and packed per Project ID



TYPHOON WUTIP RECONSTRUCTION PROJECT (TWRP)
Reconstruction / Repair of Public Infrastructure and Utilities



Region: Mortlock
Location: Kuttu, Mortlock, Chuuk
Project Name: Kuttu Community Hall

Assessment Date : June 20, 2020
Project ID : P.I. No. 15
Work Type: Reconstruction

BILL OF QUANTITIES SUMMARY					
ITEM NO.	DESCRIPTION	QTY.	UNIT	UNIT PRICE	TOTAL COST
1	5/8" thk. x 4' x 8' PT T-1-11 Plywood Siding Panel (4" groove spacing)	9	ea.		
2	Adapter, Female 3/4" Sch 40	2	ea.		
3	Bar, Angle, ¼"x 1½" x 1½" x 18"L, HDG with pre punch hole	46	ea.		
4	Bar, Angle, ¼"x 1½" x 1½" x 20ft L, HDG with pre punch hole	5	ea.		
5	Corr. Pre-Painted Galvalume Roof Sht.,32"W x 10ft L, ga. 26 (Blue)	84	ea.		
6	Corr. Pre-Painted Galvalume Roof Sht.,32"W x 12ft L, ga. 26 (Blue)	12	ea.		
7	Faucet, Brass 3/4"	1	ea.		
8	Flat Bat 2"W x 16"H x 1/4" thk. W/ 2 holes - (1/2" dia for Machine bolt), HDG	40	ea.		
9	H2.5SS Hurricane Simpson Ties, Left	176	ea.		
10	H2.5SS Hurricane Simpson Ties, Right	176	ea.		
11	J-Bolt, ¼" x 6" x 2" x 2" with hex nut/washer, SS	238	ea.		
12	Lumber, Pressure Treated Douglas Fir #2, 1" x 6" x 16ft	6	ea.		
13	Lumber, Pressure Treated Douglas Fir #2, 2" x 4" x 16ft	82	ea.		
14	Lumber, Pressure Treated Douglas Fir #2, 2" x 6" x 16ft	73	ea.		
15	Lumber, Pressure Treated Douglas Fir #2, 2" x 8" x 16ft	47	ea.		
16	Lumber, Reg. Grade, 2" x 2" x 16ft	187	ea.		
17	Lumber, Reg. Grade, 2" x 3" x 16ft	60	ea.		
18	Lumber, Reg. Grade, 2" x 4" x 16ft	274	ea.		
19	Machine Bolt, ½" x 6 1/2", HDG w/ 2 washer & 1 nut	80	set		
20	Nails, Common, 1 ½", HDG	2	lbs.		
21	Nails, Common, 1 ½" (8D)	31	lbs.		
22	Nails, Common, 2 ½" (8D)	22	lbs.		
23	Nails, Common, 3" (10D)	93	lbs.		
24	Nails, Common, 3" (10D), HDG	41	lbs.		
25	Nails, Concrete, 2" (6D), HDG	0.5	lbs		
26	Nails, SSNA8, 1 ½"	20	lbs.		
27	Oatey PVC Cement 437mL	2	can		
28	Paint Brush, 2"	3	ea.		
29	Paint Brush, 4"	4	ea.		
30	Paint Roller w/ Pan 6"	3	ea.		
31	Paint Thinner	1	gal.		
32	Paint Wood Preservative	1	gal.		
33	Paint, Enamel, Semi-Gloss, White	2	gal.		
34	Paint, Multi-Purpose Primer (Masonry/Wood)	7	gal.		
35	Paint, Semi-Gloss Latex, Blue	4	gal.		
36	Paint, Semi-Gloss Latex, White	8	gal.		
37	Plastic Nylon String 1.8mm (100 yard/roll)	2	roll		
38	Plywood, Phenolic, ½"	37	ea.		
39	Prefab Box Gutter, Galvalume 24" x 8ft L, ga. 26, (White) w/ 3 pcs Prebended 1"W x 1/4" Thk Gutter Holder (HDG)-set	18	set		
40	Prefab Galvalume End Flashing, 8ftL, ga. 26 (White)	13	ea.		
41	Prefab Galvalume End Wall Flashing, 8ftL, ga. 26 (White)	3	ea.		
42	Prefab Galvalume Ridge Cap, 8ftL, ga. 26, (Blue)	9	ea.		
43	PVC 90 deg Bend 3/4" S-40	2	ea.		
44	PVC Ball Valve 3/4"	1	ea.		
45	PVC Bend, 3"Ø x 90 deg. S40	6	ea.		
46	PVC Cleanout Adapter with Plug (Threaded) 3"Ø S40	3	ea.		
47	PVC Pipe 3/4" x10' S-40	1	ea.		
48	PVC Pipe Saddle Clip for 3"Ø PVC Pipe, Sch. 40	21	ea.		
49	PVC Pipe, 3"Ø x 20 ft., Sched. 40	8	ea.		
50	PVC Tee 3"Ø S40	6	ea.		
51	PVC Union 3/4" S-40	1	ea.		

52	Quikrete Concrete Mix Product No. 1101, 80lbs/bag	1418	bags		
53	Rebar#3, 3/8"GRD60 L20' (10mm), Epoxy coated	357	ea.		
54	Rebar#5, 5/8"GRD60 L20' (16mm), Epoxy coated	202	ea.		
55	Rivets, blind, 3/16"Ø x 1/8" grip; SS (100 pcs/box)	6	box		
56	Roof Gutter Strainer or Drain round wire or dome type (2" dia)	4	ea.		
57	Roof Sealant Caulking Gun	1	ea.		
58	Roof Sealant, Polyurethane, 10oz	3	tubes		
59	Tie wire, G.I, Ga. 16	139	lbs.		
60	Umbrella Nail with shank, 2½", G.I. with rubber washer	2000	ea.		
61	Water Tank 1,000 gal., P.E., w/ Lid, Food Grade, Stackable (One Assembly)	1	ea.		
TOTAL CIF CHUUK =					

- NOTES :**
1. CIF Weno, Chuuk Port
 2. All lumbers and plywoods labeled treated shall be CA-C (not CCA).



TYPHOON WUTIP RECONSTRUCTION PROJECT (TWRP)
Reconstruction / Repair of Public Infrastructure and Utilities



Region: Mortlock
Location: Losap, Mortlock, Chuuk
Project Name: **Losap Community Hall**

Assessment Date : June 20, 2020
Project ID : **P.I. No. 18**
Work Type: **Reconstruction**

BILL OF QUANTITIES SUMMARY

ITEM NO.	DESCRIPTION	QTY.	UNIT	UNIT PRICE	TOTAL COST
1	Adapter, Female 3/4" Sch 40	2	ea.		
2	Bar, Angle, 1/4"x 1 1/2" x 1 1/2" x 20ft L, HDG with pre punch hole	7	ea.		
3	Corr. Pre-Painted Galvalume Roof Sht., 32"W x 10ft L, ga. 26 (Blue)	56	ea.		
4	Corr. Pre-Painted Galvalume Roof Sht., 32"W x 8ft L, ga. 26 (Blue)	30	ea.		
5	Faucet, Brass 3/4"	1	ea.		
6	Flat Bat 2"W x 16"H x 1/4" thk. W/ 2 holes - (1/2" dia for Machine bolt), HDG	56	ea.		
7	H2.5SS Hurricane Simpson Ties, Left	152	ea.		
8	H2.5SS Hurricane Simpson Ties, Right	152	ea.		
9	J-Bolt, 1/4" x 6" x 2" x 2" with hex nut/washer, SS	140	ea.		
10	Lumber, Pressure Treated Douglas Fir #2, 2" x 4" x 16ft	67	ea.		
11	Lumber, Pressure Treated Douglas Fir #2, 2" x 6" x 16ft	66	ea.		
12	Lumber, Pressure Treated Douglas Fir #2, 2" x 8" x 16ft	50	ea.		
13	Lumber, Reg. Grade, 2" x 2" x 16ft	125	ea.		
14	Lumber, Reg. Grade, 2" x 3" x 16ft	40	ea.		
15	Lumber, Reg. Grade, 2" x 4" x 16ft	200	ea.		
16	Machine Bolt, 1/2" x 6 1/2", HDG w/ 2 washer & 1 nut	112	set		
17	Nails, Common, 1 1/2" (8D)	22	lbs.		
18	Nails, Common, 2 1/2" (8D)	15	lbs.		
19	Nails, Common, 2" (6D), HDG	19	lbs.		
20	Nails, Common, 3" (10D)	69	lbs.		
21	Nails, Common, 3" (10D), HDG	28	lbs.		
22	Nails, Concrete, 2" (6D), HDG	0.5	lbs		
23	Nails, SSNA8, 1 1/2"	17	lbs.		
24	Oatey PVC Cement 437mL	2	can		
25	Paint Brush, 4"	3	ea.		
26	Paint Brush, 2"	2	ea.		
27	Paint Roller w/ Pan 6"	2	ea.		
28	Paint Thinner	1	gal.		
29	Paint Wood Preservative	1	gal.		
30	Paint, Multi-Purpose Primer (Masonry/Wood)	5	gal.		
31	Paint, Semi-Gloss Latex, Blue	3	gal.		
32	Paint, Semi-Gloss Latex, White	7	gal.		
33	Plastic Nylon String 1.8mm (100 yard/roll)	1	roll		
34	Plywood, Phenolic, 1/2"	36	ea.		
35	Plywood, PT 1/2" thick CDX	5	ea.		
36	Prefab Box Gutter, Galvalume 24" x 8ft L, ga. 26, (White) w/ 3 pcs Prebended 1"W x 1/4" Thk Gutter Holder (HDG)-set	25	set		
37	Prefab Galvalume Ridge Cap, 8ftL, ga. 26, (Blue)	18	ea.		
38	PVC 90 deg Bend 3/4" S-40	2	ea.		
39	PVC Ball Valve 3/4"	1	ea.		
40	PVC Bend, 3"Ø x 90 deg. S40	6	ea.		
41	PVC Cleanout Adapter with Plug (Threaded) 3"Ø S40	3	ea.		
42	PVC Pipe 3/4" x10' S-40	1	ea.		
43	PVC Pipe Saddle Clip for 3"Ø PVC Pipe, Sch. 40	20	ea.		
44	PVC Pipe, 3"Ø x 20 ft., Sched. 40	4	ea.		
45	PVC Tee 3"Ø S40	5	ea.		
46	PVC Union 3/4" S-40	1	ea.		
47	Quikrete Concrete Mix Product No. 1101, 80lbs/bag	1126	bags		
48	Rebar#3, 3/8"GRD60 L20' (10mm), Epoxy coated	250	ea.		
49	Rebar#5, 5/8"GRD60 L20' (16mm), Epoxy coated	146	ea.		
50	Rivets, blind, 3/16"Ø x 1/8" grip; SS (100 pcs/box)	7	box		
51	Roof Gutter Strainer or Drain round wire or dome type (2" dia)	3	ea.		
52	Roof Sealant Caulking Gun	1	ea.		
53	Roof Sealant, Polyurethane, 10oz	3	tubes		
54	Tie wire, G.I, Ga. 16	104	lbs.		
55	Umbrella Nail with shank, 2 1/2", G.I. with rubber washer	1200	ea.		
56	Water Tank 1,000 gal., P.E., w/ Lid, Food Grade, Stackable (One Assembly)	1	ea.		
TOTAL CIF CHUUK =					

NOTES :

1. CIF Weno, Chuuk Port
2. All lumbers and plywoods labeled treated shall be CA-C (not CCA).



TYPHOON WUTIP RECONSTRUCTION PROJECT (TWRP)
Reconstruction / Repair of Public Infrastructure and Utilities



Region:
Location: Ta, Mortlock, Chuuk
Project Name: **Ta School Building 1**

Assessment Date : June 19, 2020
Project ID : **P.I. No. 25**
Work Type: **Reconstruction**

BILL OF QUANTITIES SUMMARY

ITEM NO.	DESCRIPTION	QTY.	UNIT	UNIT PRICE	TOTAL COST
1	1" Wide Electrical Tape, Black	3	roll		
2	100A Branch Ckt. Breaker Single Pole, 100 DF	1	ea		
3	100A Rate Main Panel Board, 1 panel	1	ea		
4	100A Rate Sub Panel Board, 4 panel	1	ea		
5	1-1/2" Dia. PVC Conduit 90deg Elbow	6	ea		
6	1-1/2" Dia. PVC Conduit Pipe, 10 ft	2	ea		
7	1-1/2" Dia. PVC Weather Head Entrance Cap	1	ea		
8	1-1/2" PVC Conduit Strap, 2 Holes	12	ea		
9	1-1/2" PVC Male Terminal Adaptor	4	ea		
10	1-1/2" PVC Male Terminal Adaptor - Lock Nut	4	ea		
11	1-1/2" PVC Type LL Condulet	2	ea		
12	12 AWG THHN Cu Wire, Black, 500ft/box	2	box		
13	12 AWG THHN Cu Wire, Green, 500ft/box	2	box		
14	12 AWG THHN Cu Wire, Red, 500ft/box	2	box		
15	2" PVC Unistrut	4	ea		
16	2/0 AWG THHN Cu Wire, Black	20	In ft		
17	2/0 AWG THHN Cu Wire, Green	20	In ft		
18	2/0 AWG THHN Cu Wire, Red	20	In ft		
19	20A Branch Ckt. Breaker Single Pole, 100 DF	2	ea		
20	20A, 2 Gang Outlet w/ Plate & Cover	4	ea		
21	3/4" Dia. PVC Conduit 90deg Elbow	25	ea		
22	3/4" Dia. PVC Conduit Pipe, 10 ft	43	ea		
23	3/4" Dia. PVC Conduit Strap, 2 Holes	180	ea		
24	3/4" Dia. PVC Male Terminal Adaptor	64	ea		
25	3/4" Dia. PVC Male Terminal Adaptor - Lock Nut	64	ea		
26	4' x 8' x 1/4" Thk Reg Grade ACX Plywood	160	ea.		
27	48"H Jalousie Aluminum Window Frame - Left & Right (for 4"W Wooden Jalousie Window)	72	pair		
28	4x4 PVC Octagonal J-box w/ Cover	18	ea		
29	5/8" thk. x 4' x 8' PT T-1-11 Plywood Siding Panel (4" groove spacing)	48	ea.		
30	5/8" x 8' cu ground rod w/ clamp	1	ea		
31	6 AWG THHN Cu Wire, Black	10	In ft		
32	Adapter, Female 3/4" Sch 40	2	ea.		
33	A1. Vinyl Coated Wire 1"x1" Mesh (48in. x 50ft.)	3	roll		
34	A2. Fiberglass Insect Screen (48in. x 25ft.)	5	roll		
35	Bar, Angle, 1/4"x 1 1/2" x 1 1/2" x 20ft L, HDG with pre punch hole	12	ea.		
36	Corr. Pre-Painted Galvalume Roof Sht.,32"W x 10ft L, ga. 26 (Blue)	56	ea.		
37	Corr. Pre-Painted Galvalume Roof Sht.,32"W x 12ft L, ga. 26 (Blue)	94	ea.		
38	D1 - 36"x 80" Opening Prefab Door Jamb, PT 2" x 6" Lumber, Prepainted Gray	4	ea.		
39	D1 - 36"x 80" Solid Core Panel Door (Prepainted Color Gray)	4	ea.		
40	Door Hinges 4x4, Brass (With Screws)	12	ea.		
41	Door Knob with Lock/Keys	4	ea.		
42	Faucet, Brass 3/4"	1	ea.		
43	Flat Bat 2"W x 16"H x 1/4" thk. W/ 2 holes - (1/2" dia for Machine bolt), HDG	74	ea.		
44	H2.5SS Hurricane Simpson Ties, Left	360	ea.		
45	H2.55SS Hurricane Simpson Ties, Right	360	ea.		
46	Insulator Wire Holder, Clamp Type, Porcelain	1	ea		
47	J-Bolt, 1/4" x 6" x 2" x 2" with hex nut/washer, SS	224	ea.		
48	Light Ceiling Socket, White	8	ea		
49	Light LED Bulb, 40 Watts	8	ea		
50	Lumber, Pressure Treated Douglas Fir #2, 2" x 2" x 16ft	256	ea.		
51	Lumber, Pressure Treated Douglas Fir #2, 2" x 4" x 16ft	240	ea.		
52	Lumber, Pressure Treated Douglas Fir #2, 2" x 6" x 16ft	6	ea.		
53	Lumber, Pressure Treated Douglas Fir #2, 2" x 8" x 16ft	199	ea.		
54	Lumber, Pressure Treated Douglas Fir #2, 1" x 1/2" x 16ft	15	ea.		
55	Lumber, Pressure Treated Douglas Fir #2, 1" x 2" x 16ft	35	ea.		
56	Lumber, Reg. Grade, 2" x 2" x 16ft	552	ea.		
57	Lumber, Reg. Grade, 2" x 3" x 16ft	65	ea.		
58	Lumber, Reg. Grade, 2" x 4" x 16ft	398	ea.		
59	Machine Bolt, 1/2" x 6 1/2", HDG w/ 2 washer & 1 nut	148	set		
60	Nails, Common, 1 1/2" (2D), HDG	15	lbs.		
61	Nails, Common, 1 1/2" (8D)	65	lbs.		
62	Nails, Common, 1 1/2" (8D), HDG	16	lbs.		
63	Nails, Common, 2 1/2" (8D)	31	lbs.		
64	Nails, Common, 2" (6D), HDG	66	lbs.		
65	Nails, Common, 3" (10D)	127	lbs.		
66	Nails, Common, 3" (10D), HDG	173	lbs.		
67	Nails, Concrete, 2" (6D), HDG	1	lbs		
68	Nails, Concrete, 3" (10D)	3	lbs.		
69	Nails, Concrete, 4" HDG	33	lbs.		
70	Nails, SSNA8, 1 1/2"	40	lbs.		
71	Oatey PVC Cement 437mL	4	can		

72	Paint Brush, 2"	6	ea.		
73	Paint Brush, 4"	7	ea.		
74	Paint Roller w/ Pan 6"	6	ea.		
75	Paint Thinner	1	gal.		
76	Paint Wood Preservative	1	gal.		
77	Paint, Ceiling Paint, Flat, White	30	ea.		
78	Paint, Enamel, Semi-Gloss, White	23	gal.		
79	Paint, Multipurpose Primer (Masonry/Wood)	34	gal.		
80	Paint, Semi-Gloss Latex, Blue	6	gal.		
81	Paint, Semi-Gloss Latex, White	7	gal.		
82	Plastic Nylon String 1.8mm (100 yard/roll)	1	roll		
83	Plywood, Phenolic, ½"	80	ea.		
84	Plywood, PT ½" thick CDX	16	ea.		
85	Prefab Box Gutter, Galvalume 24" x 8ft L, ga. 26, (White) w/ 3 pcs Prebended 1"W x 1/4" Thk Gutter Holder (HDG)-set	40	set		
86	Prefab Galvalume Ridge Cap, 8ftL, ga. 26, (Blue)	26	ea.		
87	PVC 90 deg Bend 3/4" S-40	2	ea.		
88	PVC Ball Valve 3/4"	1	ea.		
89	PVC Bend, 3"Ø x 90 deg. S40	10	ea.		
90	PVC Cleanout Adapter with Plug (Threaded) 3"Ø S40	5	ea.		
91	PVC Pipe 3/4" x10' S-40	1	ea.		
92	PVC Pipe Saddle Clip for 3"Ø PVC Pipe, Sch. 40	21	ea.		
93	PVC Pipe, 3"Ø x 20 ft., Sched. 40	6	ea.		
94	PVC Tee 3"Ø S40	5	ea.		
95	PVC Union 3/4" S-40	1	ea.		
96	PVC Utility Box	2	ea		
97	Quikrete Concrete Mix Product No. 1101, 80lbs/bag	2803	bags		
98	Rebar#3, 3/8"GRD60 L20' (10mm), Epoxy coated	544	ea.		
99	Rebar#4, 1/2"GRD60 L20' (12mm) Epoxy Coated	23	ea.		
100	Rebar#5, 5/8"GRD60 L20' (16mm), Epoxy coated	259	ea.		
101	Rivets, blind, 3/16"Ø x ½" grip; SS (100 pcs/box)	11	box		
102	Roof Gutter Strainer or Drain round wire or dome type (2" dia)	5	ea.		
103	Roof Sealant (Polyurethane, 10oz)	3	tubes		
104	Roof Sealant Caulking Gun	1	ea.		
105	Surface Type Utility Box	4	ea		
106	Tie wire, G.I, Ga. 16	191	lbs.		
107	Two-Gang Switch w/ Plate & Cover, Toggle	2	ea		
108	Umbrella Nail with shank, 2½", G.I. with rubber washer	2500	ea.		
109	Unistrut Channel 1-5/8" x 10' Ga. 12, HDG	2	ea		
110	W1- 3-Opening 24"W x 48"H, , Prefab Window Jamb (PT 2x6 Lumber, Prepainted Gray)	12	set		
111	W-1 4"W x 24"L Wooden Jalousie Window, Prepainted White	520	ea.		
112	Water Tank 1,000 gal., P.E., w/ Lid, Food Grade, Stackable (One Assembly)	1	ea.		
113	Wire Nut (pcs)	250	ea		
TOTAL CIF CHUUK =					

NOTES :

1. CIF Weno, Chuuk Port
2. All lumbers and plywoods labeled treated shall be CA-C (not CCA).



TYPHOON WUTIP RECONSTRUCTION PROJECT (TWRP)
Reconstruction / Repair of Public Infrastructure and Utilities



Region: Mortlock
Location: Ta, Mortlock, Chuuk
Project Name: **Ta Warehouse**

Assessment Date : June 19, 2020
Project ID : **P.I. No. 26**
Work Type: **Reconstruction**

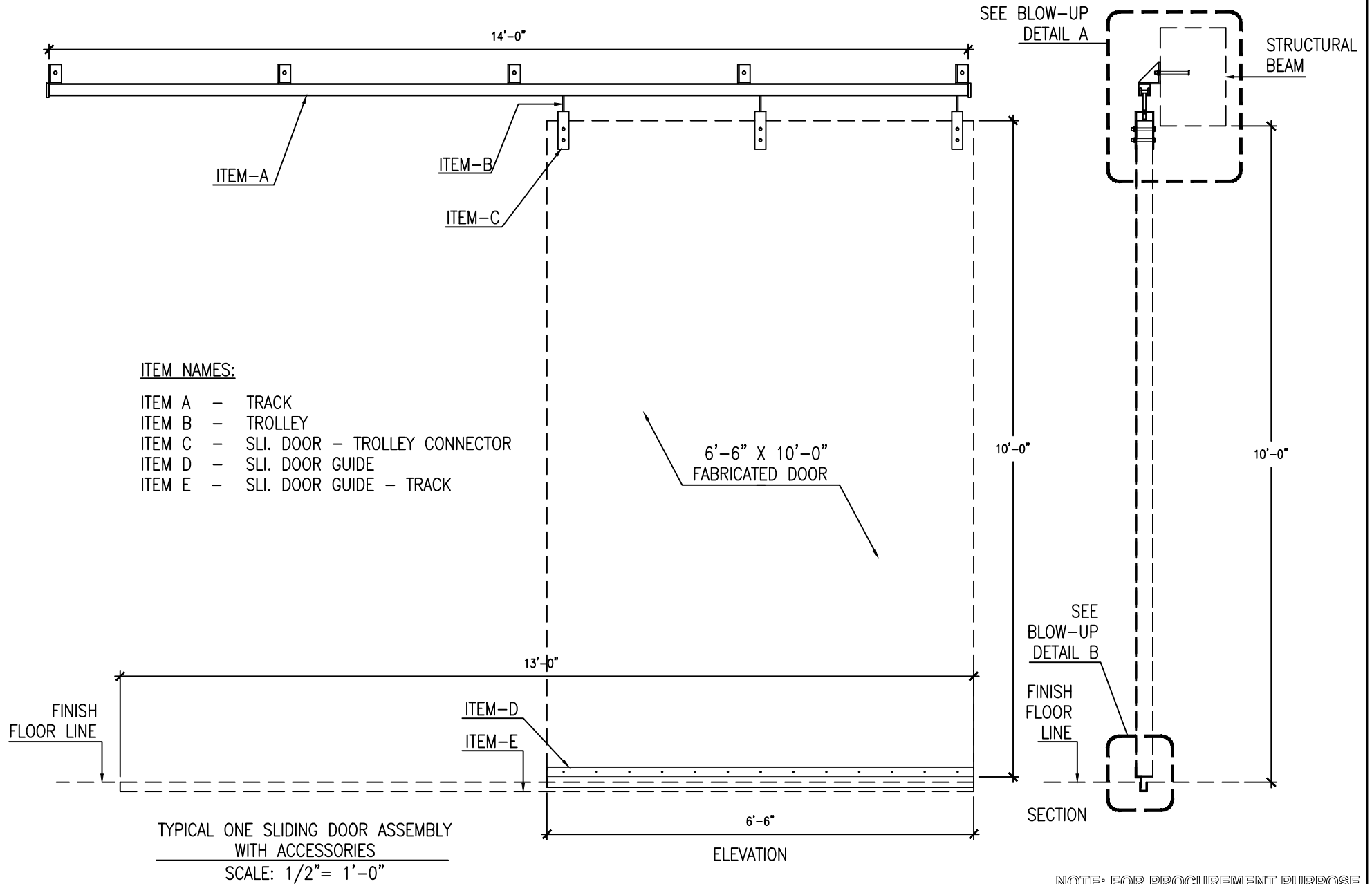
BILL OF QUANTITIES SUMMARY

ITEM NO.	DESCRIPTION	QTY.	UNIT	UNIT PRICE	TOTAL COST
1	1" Wide Electrical Tape, Black	4	roll		
2	100A Branch Ckt. Breaker Single Pole, 100 DF	1	ea		
3	100A Rate Main Panel Board, 1 panel	1	ea		
4	100A Rate Sub Panel Board, 4 panel	1	ea		
5	1-1/2" Dia. PVC Conduit 90deg Elbow	6	ea		
6	1-1/2" Dia. PVC Conduit Pipe, 10 ft	2	ea		
7	1-1/2" Dia. PVC Weather Head Entrance Cap	1	ea		
8	1-1/2" PVC Conduit Strap, 2 Holes	12	ea		
9	1-1/2" PVC Male Terminal Adapter	4	ea		
10	1-1/2" PVC Male Terminal Adapter - Lock Nut	4	ea		
11	1-1/2" PVC Type LL Condulet	2	ea		
12	12 AWG THHN Cu Wire, Black, 500ft/box	2	box		
13	12 AWG THHN Cu Wire, Green, 500ft/box	2	box		
14	12 AWG THHN Cu Wire, Red, 500ft/box	2	box		
15	2" PVC Unistrut	4	ea		
16	2/0 AWG THHN Cu Wire, Black	30	In ft		
17	2/0 AWG THHN Cu Wire, Green	30	In ft		
18	2/0 AWG THHN Cu Wire, Red	30	In ft		
19	20A Branch Ckt. Breaker Single Pole, 100 DF	3	ea		
20	20A, 2 Gang Outlet w/ Plate & Cover	4	ea		
21	3/4" Dia. PVC Conduit 90deg Elbow	40	ea		
22	3/4" Dia. PVC Conduit Pipe, 10 ft	60	ea		
23	3/4" Dia. PVC Conduit Strap, 2 Holes	240	ea		
24	3/4" Dia. PVC Male Terminal Adapter	80	ea		
25	3/4" Dia. PVC Male Terminal Adapter - Lock Nut	80	ea		
26	4' x 8' x 1/4" Thk Reg Grade ACX Plywood	64	ea.		
27	4x4 PVC Octagonal J-box w/ Cover	30	ea		
28	5/8" thk. x 4' x 8' PT T-1-11 Plywood Siding Panel (4" groove spacing)	82	ea.		
29	5/8" x 8' cu ground rod w/ clamp	1	ea		
30	6 AWG THHN Cu Wire, Black	10	In ft		
31	6-1/2 in. L Zinc-Plated Silver Steel Utility Pull	4	ea.		
32	Adapter, Female 3/4" Sch 40	2	ea.		
33	Bar, Angle, 1/4"x 1 1/2" x 1 1/2" x 18"L, HDG with pre punched hole	52	ea.		
34	Bar, Angle, 1/4"x 1 1/2" x 1 1/2" x 20ft L, HDG with pre punched hole	8	ea.		
35	Corr. Pre-Painted Galvalume Roof Sht.,32"W x 10ft L, ga. 26 (Blue)	65	ea.		
36	Corr. Pre-Painted Galvalume Roof Sht.,32"W x 12ft L, ga. 26 (Blue)	65	ea.		
37	D1 - 36"x 80" Solid Core Panel Door (Prepainted Color Gray)	4	ea.		
38	D1 - 72"x 80" Opening Prefab Door Jamb, PT 2" x 6" Lumber, Prepainted Gray	2	ea.		
39	D2 - Prefabricated 6'-6" x 10'-0" x 2 3/4" Thick Door, Prepainted White	4	ea.		
40	Door Hinges 4x4, Brass (With Screws)	12	ea.		
41	Faucet, Brass 3/4"	1	ea.		
42	Flat Bar 2"W x 16"H x 1/4" thk. W/ 2 holes - (1/2" dia for Machine bolt), HDG	56	ea.		
43	Garage Door Drop Bolt	6	ea.		
44	H2.5SS Hurricane Simpson Ties, Left	254	ea.		
45	H2.5SS Hurricane Simpson Ties, Right	254	ea.		
46	Insulator Wire Holder, Clamp Type, Porcelain	1	ea		
47	J-Bolt, 1/4" x 6" x 2" x 2" with hex nut/washer, SS	306	ea.		
48	Light Ceiling Socket, White	12	ea		
49	Light LED Bulb, 60 Watts	12	ea		
50	Lumber, Pressure Treated Douglas Fir #2, 1" x 6" x 16ft (End Purlin)	8	ea.		
51	Lumber, Pressure Treated Douglas Fir #2, 2" x 10" x 16ft	130	ea.		
52	Lumber, Pressure Treated Douglas Fir #2, 2" x 4" x 16ft	152	ea.		
53	Lumber, Pressure Treated Douglas Fir #2, 2" x 4" x 16ft (Purlins)	119	ea.		
54	Lumber, Pressure Treated Douglas Fir #2, 2" x 6" x 16ft	85	ea.		
55	Lumber, Pressure Treated Douglas Fir #2, 2" x 8" x 16ft	78	ea.		
56	Lumber, Pressure Treated Douglas Fir #2, 2" x 8" x 16ft (Fascia Board)	12	ea.		
57	Lumber, Reg. Grade, 2" x 2" x 16ft	545	ea.		
58	Lumber, Reg. Grade, 2" x 3" x 16ft	80	ea.		
59	Lumber, Reg. Grade, 2" x 4" x 16ft	406	ea.		
60	Lumber, Reg. Grade, 2" x 4" x 16ft	14	ea.		
61	Machine Bolt, 1/2" x 6 1/2", HDG w/ 2 washer & 1 nut	548	set		
62	Nails, Common, 1 1/2", HDG	2	lbs.		
63	Nails, Common, 1 1/2" (8D)	71	lbs.		
64	Nails, Common, 1 1/2" (8D), HDG	22	lbs.		
65	Nails, Common, 2 1/2" (8D)	30	lbs.		
66	Nails, Common, 2" (6D), HDG	68	lbs.		
67	Nails, Common, 3" (10D)	137	lbs.		
68	Nails, Common, 3" (10D), HDG	216	lbs.		
69	Nails, Concrete, 2" (6D), HDG	0.5	lbs		

70	Nails, Concrete, 4" HDG	25	lbs.		
71	Nails, SSN8, 1 ½"	11	lbs.		
72	Oatey PVC Cement 437mL	4	can		
73	Paint Brush, 2"	6	ea.		
74	Paint Brush, 4"	8	ea.		
75	Paint Roller w/ Pan 6"	7	ea.		
76	Paint Thinner	3	gal.		
77	Paint Wood Preservative	2	gal.		
78	Paint, Enamel, Semi-Gloss, White	38	gal.		
79	Paint, Multi-Purpose Primer (Masonry/Wood)	33	gal.		
80	Paint, Semi-Gloss Latex, Blue	8	gal.		
81	Paint, Semi-Gloss Latex, White	21	gal.		
82	Plastic Nylon String 1.8mm (100 yard/roll)	2	roll		
83	Plywood, Phenolic, ½"	91	ea.		
84	Plywood, PT ½" thick CDX	14	ea.		
85	Prefab Box Gutter, Galvalume 24" x 8ft L, ga. 26, (White) w/ 3 pcs Prebended 1"W x 1/4" Thk Gutter Holder (HDG)-set	26	set		
86	Prefab Galvalume End Flashing, 8ftL, ga. 26 (White)	18	ea.		
87	Prefab Galvalume End Wall Flashing, 8ftL, ga. 26 (Blue)	4	ea.		
88	Prefab Galvalume Ridge Cap, 8ftL, ga. 26, (Blue)	11	ea.		
89	PVC 90 deg Bend 3/4" S-40	2	ea.		
90	PVC Ball Valve 3/4"	1	ea.		
91	PVC Bend, 3"Ø x 90 deg. S40	8	ea.		
92	PVC Cleanout Adapter with Plug (Threaded) 3"Ø S40	2	ea.		
93	PVC Pipe 3/4" x10' S-40	1	ea.		
94	PVC Pipe Saddle Clip for 3"Ø PVC Pipe, Sch. 40	12	ea.		
95	PVC Pipe, 3"Ø x 20 ft., Sched. 40	5	ea.		
96	PVC Tee 3"Ø S40	3	ea.		
97	PVC Union 3/4" S-40	1	ea.		
98	PVC Utility Box	2	ea		
99	Quikrete Concrete Mix Product No. 1101, 80lbs/bag	1988	bags		
100	Rebar#3, 3/8"GRD60 L20' (10mm), Epoxy coated	389	ea.		
101	Rebar#4, 1/2"GRD60 L20' (12mm) Epoxy Coated	20	ea.		
102	Rebar#5, 5/8"GRD60 L20' (16mm), Epoxy coated	285	ea.		
103	Rivets, blind, 3/16"Ø x ½" grip; SS (100 pcs/box)	10	box		
104	Roof Gutter Strainer or Drain round wire or dome type (2" dia)	2	ea.		
105	Roof Sealant Caulking Gun	1	ea.		
106	Roof Sealant, Polyurethane, 10oz	3	tubes		
107	Slide Bolt Gate Latch Safety Door Lock w/ Padlock Hole	4	ea.		
108	Steel Sliding Door Stopper	4	ea.		
109	Surface Type Utility Box	4	ea		
110	Tie wire, G.I, Ga. 16	182	lbs.		
111	Two-Gang Switch w/ Plate & Cover, Toggle	2	ea		
112	Umbrella Nail with shank, 2½", G.I. with rubber washer	2200	ea.		
113	Unistrut Channel	2	ea		
114	W1 - 1-Opening 36"W x 48"H, , Prefab Window Jamb, PT 2" x 6" Lumber, Prepainted Gray	3	set		
115	W1 - 2-Panel 3ft x 4ft Sliding Window w/ Track, Powder Coated	3	set		
116	Water Tank 1,000 gal., P.E., w/ Lid, Food Grade, Stackable (One Assembly)	1	ea.		
117	Wire Nut (pcs)	250	ea		
118*	Item A Sliding Door Track Set	4	set		
	- 14'-0" L Track with welded 5 pcs Track Support				
	- 5 pcs. 1/2" dia. x 8" L Bolt with Nut & Washer				
	- 2 pcs Track End Cover				
119*	Item B Trolley (4 - 2" Wheel)	12	ea		
120*	Item C Sliding Door Connector Set	12	set		
	- 2 pcs. 1/2" dia. x 5" L Bolt with 2 Nuts & 8 Washers				
	- 1-pc. 2" x 7" x 3-1/2" Sliding Door Connector Piece				
121*	Item D Sliding Door Guide (6'-6"L)	4	ea.		
122*	Item E Sliding Door Guide Track (13'-0"L)	4	ea.		
TOTAL CIF CHUUK =					

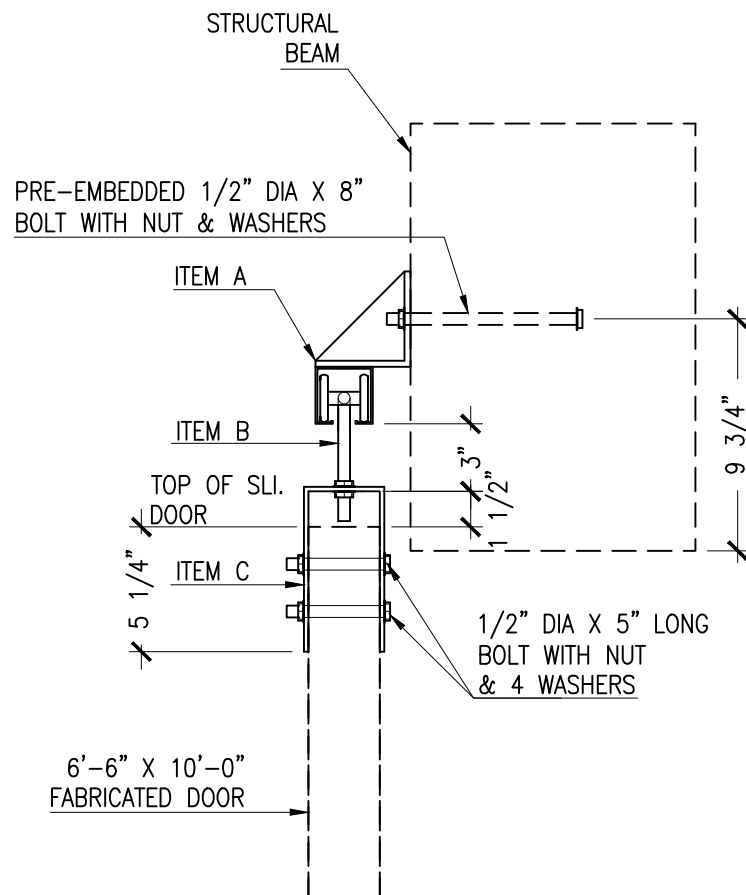
NOTES :
1. CIF Weno, Chuuk Port
2. All lumbers and plywoods labeled treated shall be CA-C (not CCA).

* Please see below drawings for Items 118 - 122 (Items A - E)



NOTE: FOR PROCUREMENT PURPOSE

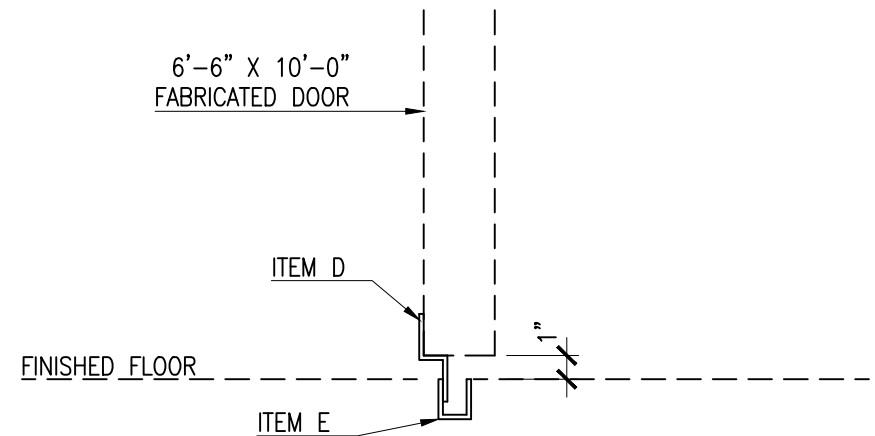
<p>UNITED STATES AGENCY FOR INTERNATIONAL DEVELOPMENT</p> <p>INTERNATIONAL ORGANIZATION FOR MIGRATION</p> <p>TWRP - TYPHOON WUTIP RECONSTRUCTION PROJECT</p>	<p>IOM • OIM</p>	PREPARED BY:	RECOM. FOR APPROVAL:	APPROVED BY:	PROJECT TITLE:	SHEET CONTENT:	PI NO.:
		JUNE AMERUCI MULU	JORDAN SIMJANOSKI	NATHAN MICHAEL GLANCY	SLIDING DOOR ACCESSORIES FOR FOR PI NO. 26 (VENDOR DRAWING)	TYPICAL ONE SLIDING DOOR ASSEMBLY WITH ACCESSORIES	~
		LEAD ENGR. BTG ARCH & ENGR'G	RECONSTRUCTION MANAGER	CHIEF OF PARTY	ISLAND:		SHEET NO.:
		DATE: 02.16.2022	DATE:	DATE:	REGION / STATE:		V-04
							VENDOR DWG
							REV. 0



BLOW-UP DETAIL A
SCALE: 1 1/2" = 1'-0"




ITEM NAMES:

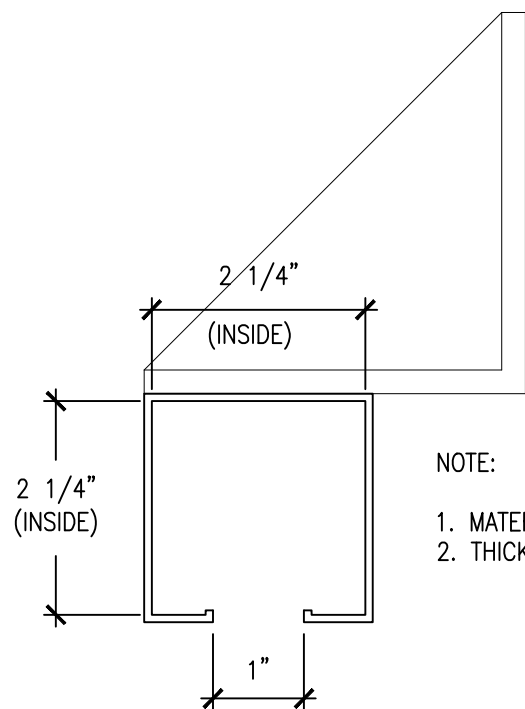
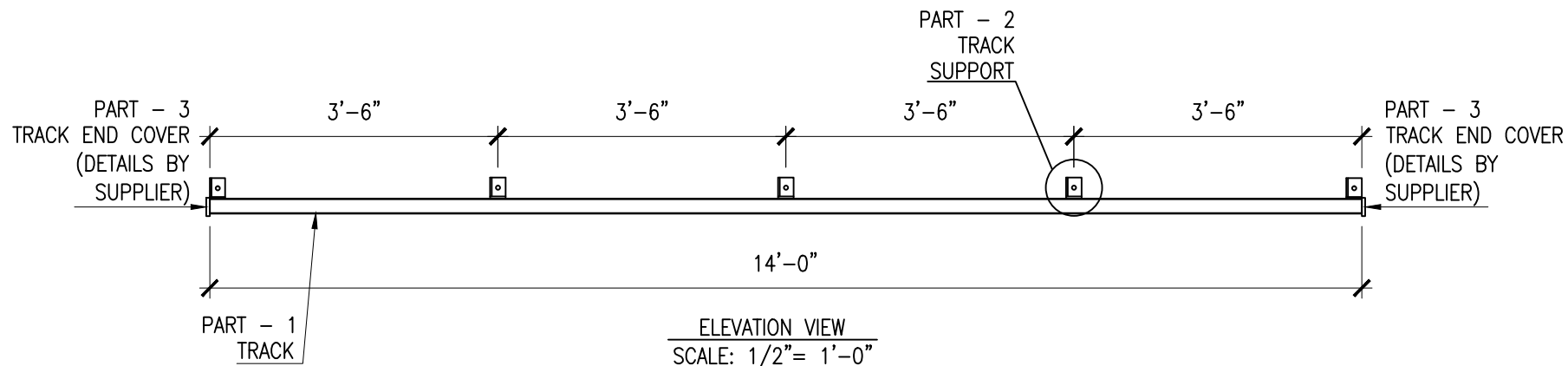
- ITEM A - TRACK
- ITEM B - TROLLEY
- ITEM C - SLI. DOOR - TROLLEY CONNECTOR
- ITEM D - SLI. DOOR GUIDE
- ITEM E - SLI. DOOR GUIDE - TRACK



BLOW-UP DETAIL B
SCALE: 1 1/2" = 1'-0"

NOTE: FOR PROCUREMENT PURPOSE

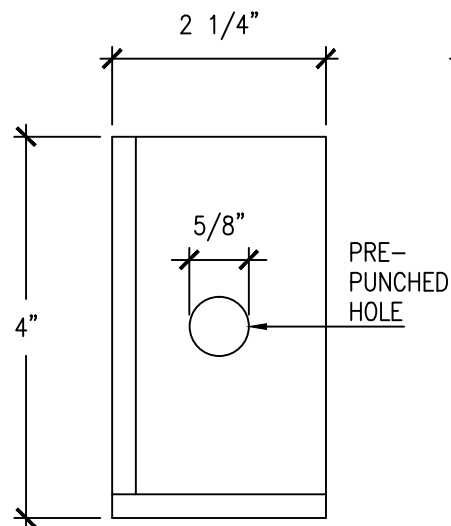
<div><div>UNITED STATES AGENCY FOR INTERNATIONAL DEVELOPMENT</div><div>INTERNATIONAL ORGANIZATION FOR MIGRATION</div><div>TWRP - TYPHOON WUTIP RECONSTRUCTION PROJECT</div><div><div>IOM • OIM</div></div></div>	PREPARED BY:		RECOM. FOR APPROVAL:	APPROVED BY:	PROJECT TITLE:	SHEET CONTENT: BLOW-UP DETAIL A BLOW-UP DETAIL B	PI NO.:
	 JUNE AMERUCIMULO		JORDAN SIMJANOSKI	NATHAN MICHAEL GLANCY	SLIDING DOOR ACCESSORIES FOR FOR PI NO. 26 (VENDOR DRAWING)		~
	LEAD ENGR. BTG ARCH & ENGR'NG		RECONSTRUCTION MANAGER	CHIEF OF PARTY	ISLAND:		
	DATE : 02.16.2022		DATE :	DATE :	REGION / STATE :		
							SHEET NO.:
							V-04a
							VENDOR DWG
							REV. 0



PART - 1 "TRACK"
SECTION VIEW
SCALE: 6" = 1'-0"

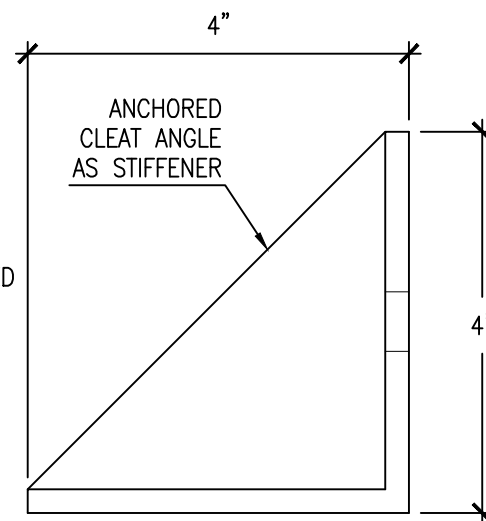
NOTE:

1. MATERIAL: GALVANIZED IRON
2. THICKNESS: 2.5MM



FRONT VIEW

PART - 2 "TRACK
SUPPORT" DETAILS
SCALE: 6" = 1'-0"



SIDE VIEW

NOTE:

3. MATERIAL: GALVANIZED IRON
4. THICKNESS: 1/4"
5. WITH 5/8" DIA. PRE-PUNCHED HOLE
6. WELDED TO TRACK AS PER DIMENSION SHOWN
7. WITH 5 PCS - 1/2" DIA X 8" LONG BOLT WITH NUT & WASHER

ITEM A -
TRACK DETAILS
SCALE: AS SHOWN

NOTE: FOR PROCUREMENT PURPOSE



UNITED STATES AGENCY FOR
INTERNATIONAL DEVELOPMENT
INTERNATIONAL ORGANIZATION
FOR MIGRATION
TWRP - TYPHOON WUTIP
RECONSTRUCTION PROJECT



PREPARED BY:
JUNE AMERUCIMULO
LEAD ENGR. BTG ARCH & ENGR'G
DATE: 02.16.2022

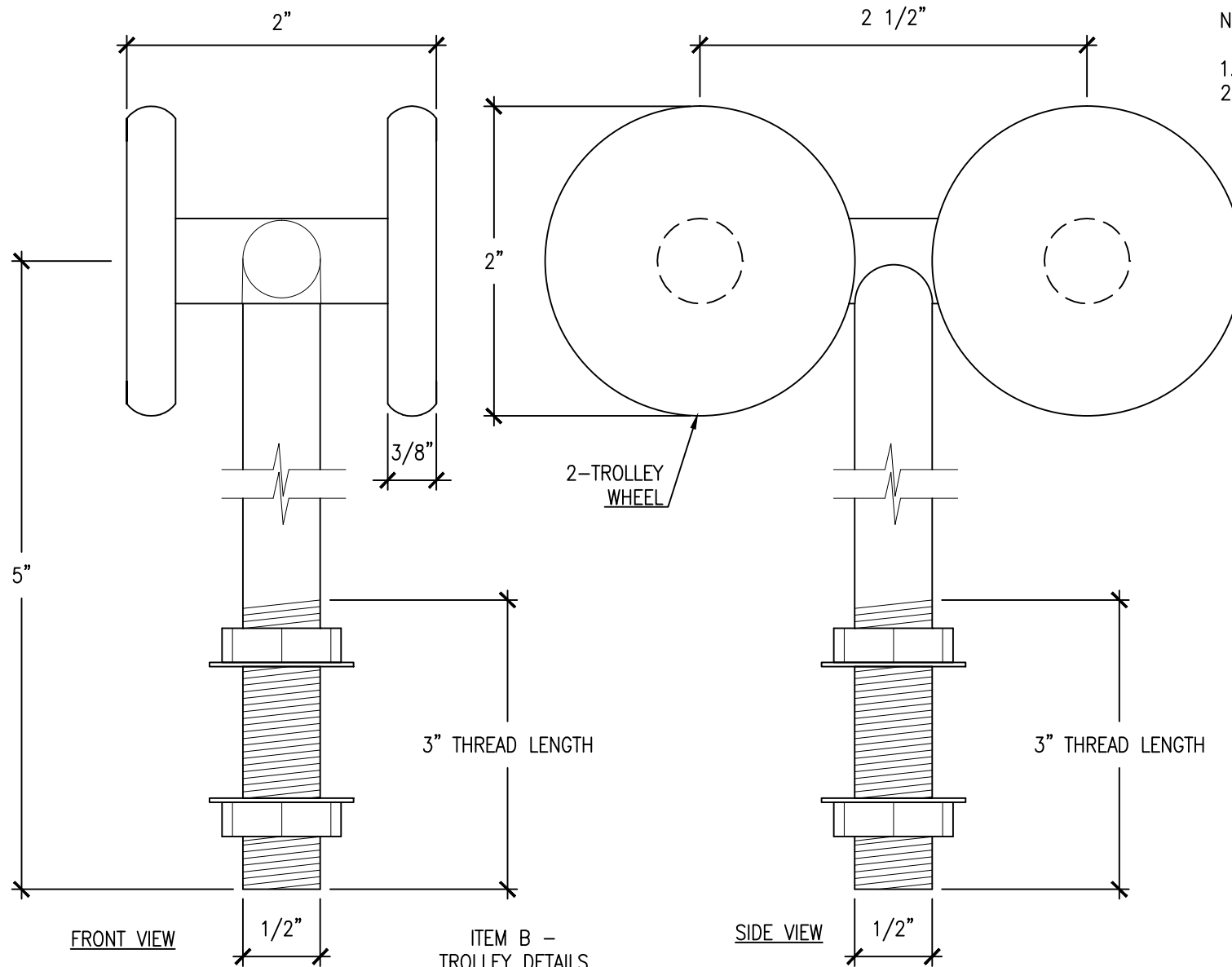
RECOM. FOR APPROVAL:
JORDAN SIMJANOSKI
RECONSTRUCTION MANAGER
DATE:

APPROVED BY:
NATHAN MICHAEL GLANCY
CHIEF OF PARTY
DATE:

PROJECT TITLE:
SLIDING DOOR ACCESSORIES FOR
FOR PI NO. 26
(VENDOR DRAWING)
ISLAND: -
REGION / STATE: -

SHEET CONTENT:
ITEM A - TRACK DETAILS

PI NO.: ~
SHEET NO.:
V-04b
VENDOR DWG
REV. 0



- NOTE:
1. MATERIAL: GALVANIZED IRON
 2. WITH 2 NUTS & 4 WASHERS

FRONT VIEW

ITEM B -
TROLLEY DETAILS
SCALE: 1' = 1'-0"

SIDE VIEW

NOTE: FOR PROCUREMENT PURPOSE



UNITED STATES AGENCY FOR
INTERNATIONAL DEVELOPMENT
INTERNATIONAL ORGANIZATION
FOR MIGRATION
TWRP - TYPHOON WUTIP
RECONSTRUCTION PROJECT



PREPARED BY:
JUNE AMERUCIMULO
LEAD ENGR. BTG ARCH & ENGR'G
DATE: 02.16.2022

RECOM. FOR APPROVAL:
JORDAN SIMJANOSKI
RECONSTRUCTION MANAGER
DATE:

APPROVED BY:
NATHAN MICHAEL GLANCY
CHIEF OF PARTY
DATE:

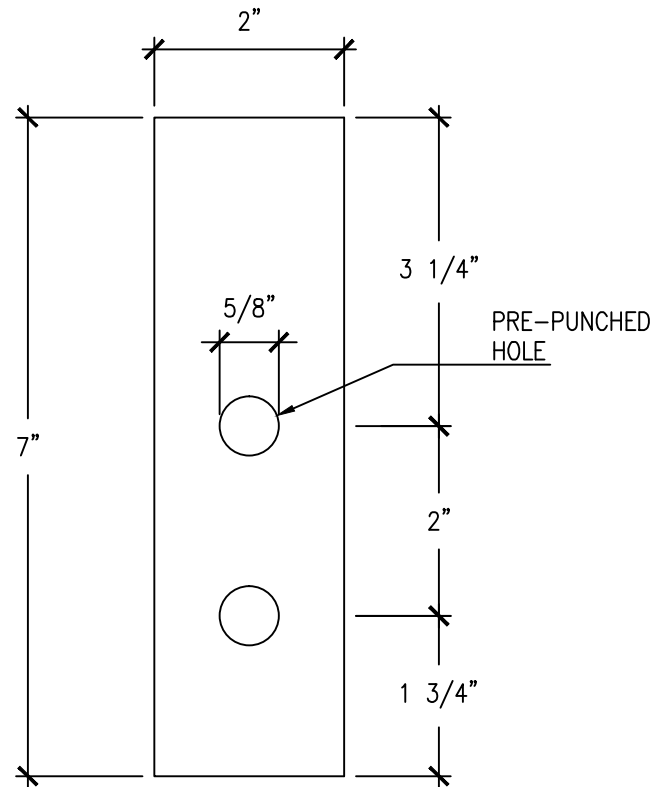
PROJECT TITLE:
SLIDING DOOR ACCESSORIES FOR
FOR PI NO. 26
(VENDOR DRAWING)
ISLAND: ~
REGION / STATE: ~

SHEET CONTENT:
ITEM B - TROLLEY DETAILS

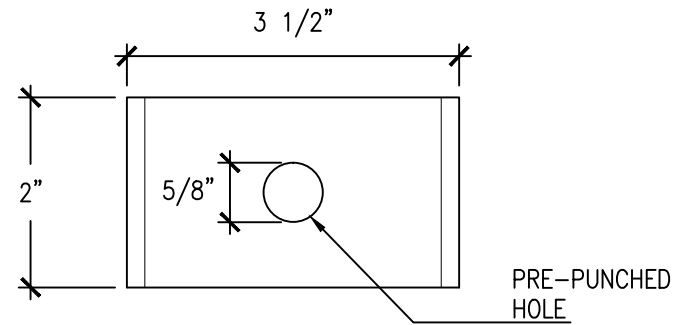
PI NO.: ~
SHEET NO.:
V-04c
VENDOR DWG
REV. 0

NOTE:

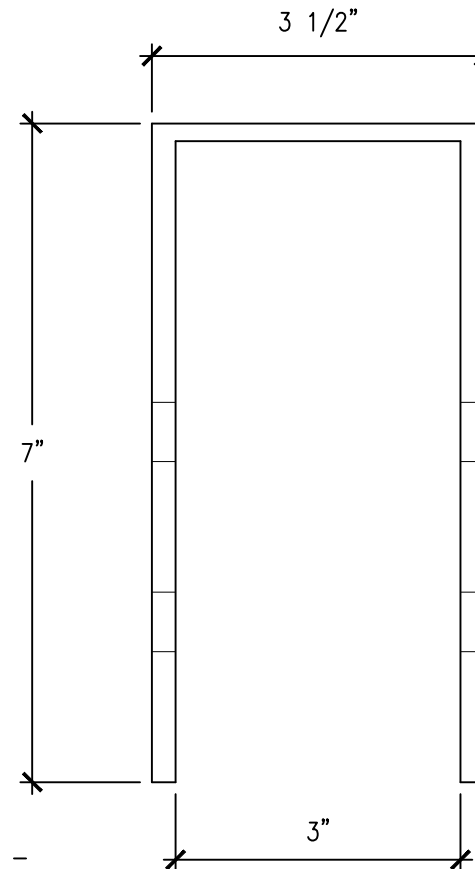
1. MATERIAL: GALVANIZED IRON
2. THICKNESS: 1/4"
3. WITH 2 PCS - 1/2" DIA X 5" LONG BOLT WITH 2 NUTS & 8 WASHERS (NOT DETAILED)



TYPICAL
FRONT & BACK VIEW



TOP VIEW



SIDE VIEW

ITEM - C "SLI. DOOR -
TROLLEY CONNECTOR" DETAILS
SCALE: 6" = 1'-0"

NOTE: FOR PROCUREMENT PURPOSE



UNITED STATES AGENCY FOR
INTERNATIONAL DEVELOPMENT
INTERNATIONAL ORGANIZATION
FOR MIGRATION
TWRP - TYPHOON WUTIP
RECONSTRUCTION PROJECT



PREPARED BY:
JUNE AMERUCI/MULO
LEAD ENGR. BTG ARCH & ENGR'G
DATE: 02.16.2022

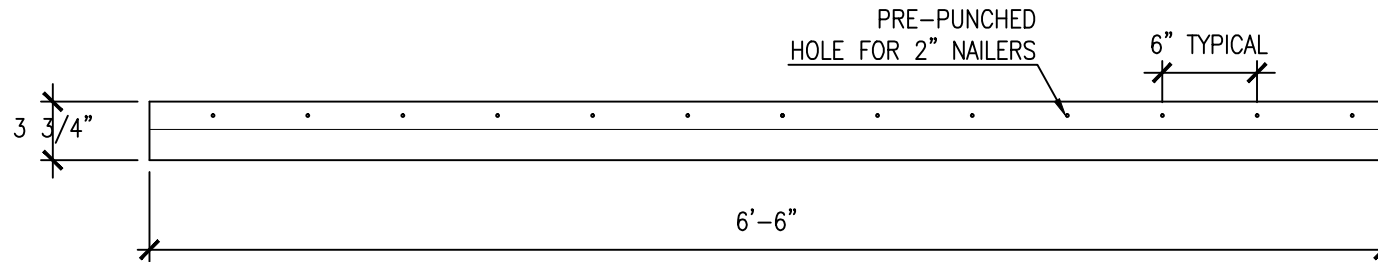
RECOM. FOR APPROVAL:
JORDAN SIMJANOSKI
RECONSTRUCTION MANAGER
DATE:

APPROVED BY:
NATHAN MICHAEL GLANCY
CHIEF OF PARTY
DATE:

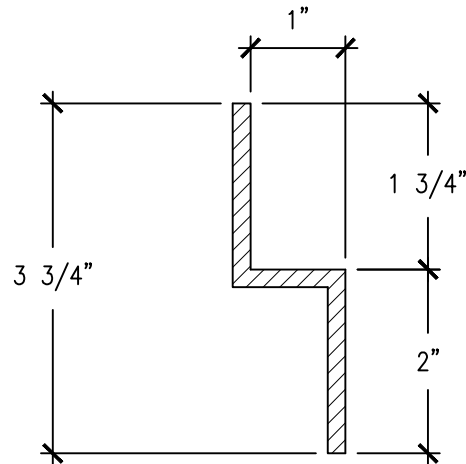
PROJECT TITLE:
SLIDING DOOR ACCESSORIES FOR
FOR PI NO. 26
(VENDOR DRAWING)
ISLAND: ~
REGION / STATE: ~

SHEET CONTENT:
ITEM C - SLI. DOOR - TROLLEY CONNECTOR

PI NO.: ~
SHEET NO.:
V-04d
VENDOR DWG
REV. 0



FRONT VIEW
SCALE: 1" = 1'-0"






SECTION VIEW
SCALE: 6" = 1'-0"

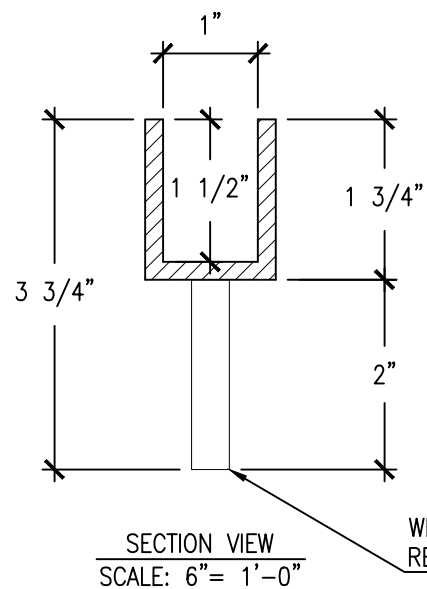
NOTE:

1. MATERIAL: GALVANIZED IRON
2. THICKNESS: 1/4"
3. WITH PRE-PUNCHED HOLE FOR 2" NAILERS SPACE AS SHOWN

ITEM D -
SLI. DOOR GUIDE
SCALE: AS SHOWN

NOTE: FOR PROCUREMENT PURPOSE

 UNITED STATES AGENCY FOR INTERNATIONAL DEVELOPMENT INTERNATIONAL ORGANIZATION FOR MIGRATION TWRP - TYPHOON WUTIP RECONSTRUCTION PROJECT 	PREPARED BY:	RECOM. FOR APPROVAL:	APPROVED BY:	PROJECT TITLE:	SHEET CONTENT:	PI NO.:
	 JUNE AMBRUCE-MULO	JORDAN SIMJANOSKI	NATHAN MICHAEL GLANCY	SLIDING DOOR ACCESSORIES FOR FOR PI NO. 26 (VENDOR DRAWING)	ITEM D - SLI. DOOR GUIDE	~
	LEAD ENGR. BTG ARCH & ENGR'G	RECONSTRUCTION MANAGER	CHIEF OF PARTY	ISLAND:		SHEET NO.:
	DATE: 02.16.2022	DATE:	DATE:	REGION / STATE:		V-04e
						VENDOR DWG
						REV. 0




1. MATERIAL: GALVANIZED IRON
2. THICKNESS: 1/4"
3. WELDED 2" LONG #3 COATED REBAR AS DOWEL SPACED AS SHOWN

ITEM E - SLI. DOOR
GUIDE - TRACK
SCALE: AS SHOWN



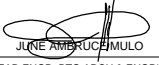
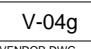
NOTE: FOR PROCUREMENT PURPOSE

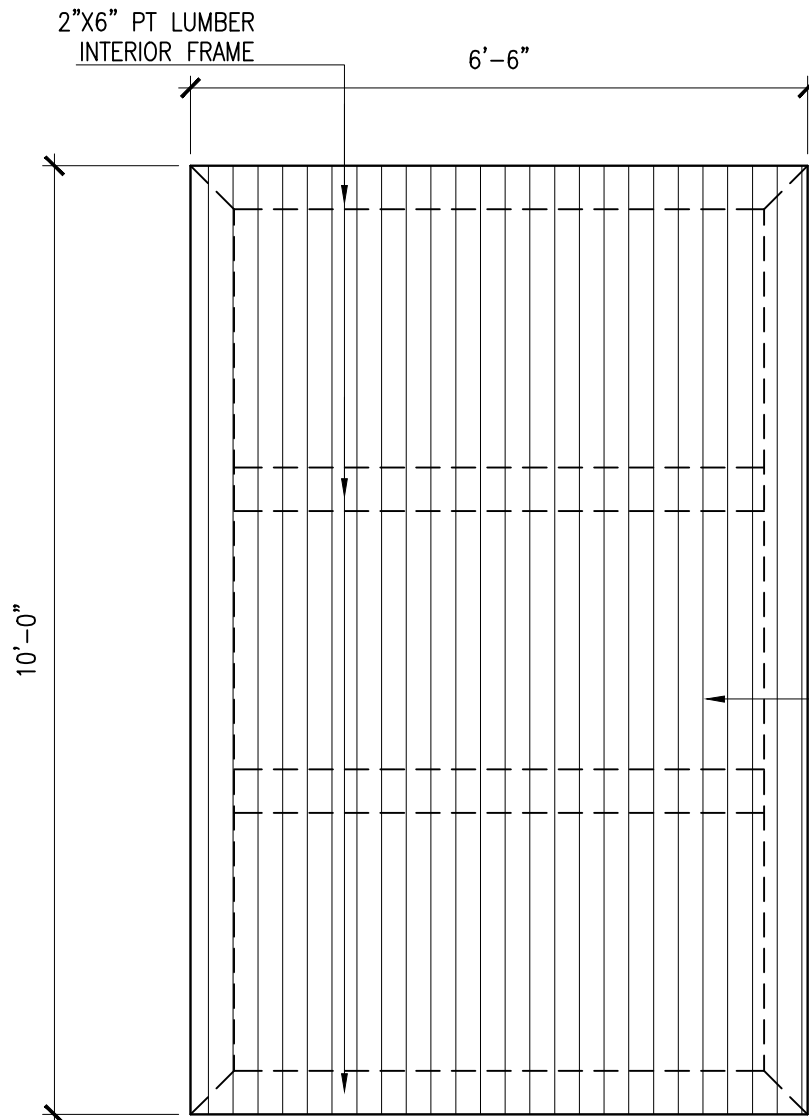


PREPARED BY:	RECOM. FOR APPROVAL:	APPROVED BY:	PROJECT TITLE:	SHEET CONTENT:	PI NO.:
	JORDAN SIMJANOSKI	NATHAN MICHAEL GLANCY	SLIDING DOOR ACCESSORIES FOR FOR PI NO. 26 (VENDOR DRAWING)	ITEM D - SL. DOOR GUIDE - TRACK	~
LEAD ENGR. BTG ARCH & ENGR'NG	RECONSTRUCTION MANAGER	CHIEF OF PARTY	ISLAND:		SHEET NO.:
DATE : 02.16.2022	DATE :	DATE :	REGION / STATE :		V-04f
					VENDOR DWG
					REV. 0

SUMMARY OF QUANTITIES				
ITEM TAG	DESCRIPTION	ADDITIONAL ITEMS	NO. PER SLI. DOOR	TOTAL SETS
ITEM A	TRACK	WITH 5 PCS – 1/2” DIA X 8” LONG BOLT WITH NUT & WASHER	1	4
		2 PCS TRACK END COVER		
ITEM B	TROLLEY	~	3	12
ITEM C	SLI. DOOR CONNECTOR	WITH 2 PCS – 1/2” DIA X 5” LONG BOLT WITH 2 NUTS & 8 WASHERS	3	12
ITEM D	SLI. DOOR GUIDE	~	1	4
ITEM E	SLI. DOOR GUIDE TRACK	~	1	4

NOTE: FOR PROCUREMENT PURPOSE

 UNITED STATES AGENCY FOR INTERNATIONAL DEVELOPMENT INTERNATIONAL ORGANIZATION FOR MIGRATION TWRP - TYPHOON WUTIP RECONSTRUCTION PROJECT 	PREPARED BY:  JUNE AMERUCE JIMULO	RECOM. FOR APPROVAL: JORDAN SIMJANOSKI	APPROVED BY: NATHAN MICHAEL GLANCY	PROJECT TITLE: SLIDING DOOR ACCESSORIES FOR FOR PI NO. 26 (VENDOR DRAWING)	SHEET CONTENT: SUMMARY OF QUANTITIES	PI NO.: ~
	LEAD ENGR. BTG ARCH & ENGR'NG	RECONSTRUCTION MANAGER	CHIEF OF PARTY	ISLAND: ~		SHEET NO.:
	DATE : 02.16.2022	DATE :	DATE :	REGION / STATE : ~		VENDOR DWG
						REV. 0



FRONT VIEW
SCALE: 1/2" = 1'-0"

SEE BLOW-UP
DETAIL C

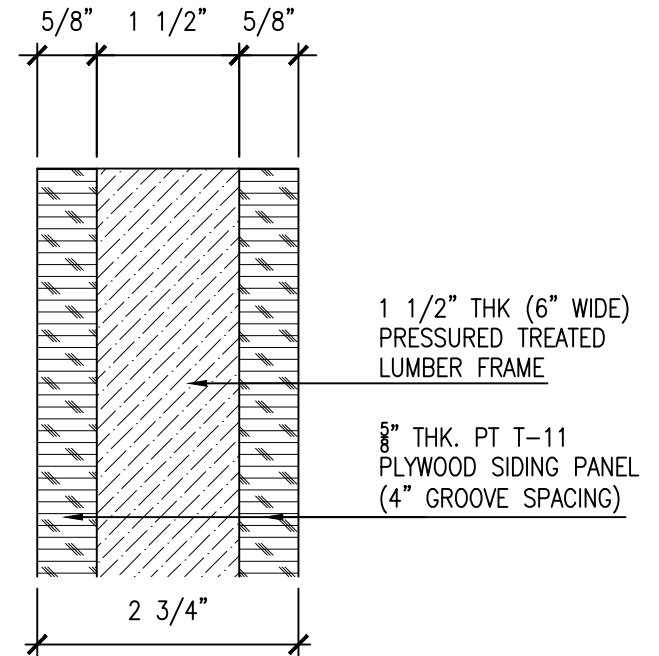
5/8" THK. PT T-11
PLYWOOD SIDING PANEL
(4" GROOVE SPACING)
PRE-PAINTED COLOR
WHITE



SECTION VIEW
SCALE: 1/2" = 1'-0"

NOTE:




1. MATERIAL: PRESSURED TREATED LUMBER
2. QUANTITY: 4 PCS
3. PRE-PAINTED COLOR WHITE



BLOW-UP DETAIL - C
SCALE: 6" = 1'-0"

SLIDING (SLI) DOOR
DETAILS
SCALE: AS SHOWN

NOTE: FOR PROCUREMENT PURPOSE

 <div>UNITED STATES AGENCY FOR INTERNATIONAL DEVELOPMENT</div> <div>INTERNATIONAL ORGANIZATION FOR MIGRATION</div> <div>TWRP - TYPHOON WUTIP RECONSTRUCTION PROJECT</div>	 <div>IOM • OIM</div>	PREPARED BY:	RECOM. FOR APPROVAL:	APPROVED BY:	PROJECT TITLE:	SHEET CONTENT:	PI NO.:
		 <div>JUNE AMERUCHE MULO</div>	<div>JORDAN SIMJANOSKI</div>	<div>NATHAN MICHAEL GLANCY</div>	SLIDING DOOR DETAILS FOR PI NO. 26 (VENDOR DRAWING)	SLIDING (SLI) DOOR DETAILS	~
		LEAD ENGR. BTG ARCH & ENGR'G	RECONSTRUCTION MANAGER	CHIEF OF PARTY			SHEET NO.:
		DATE: 02.16.2022	DATE:	DATE:			V-05
							VENDOR DWG
				REGION / STATE:	REV.	0	



TYPHOON WUTIP RECONSTRUCTION PROJECT (TWRP)
Reconstruction / Repair of Public Infrastructure and Utilities



Region:
Location: Ta, Mortlock, Chuuk
Project Name: **Ta School Building 2**

Assessment Date : June 19, 2020
Project ID : **P.I. No. 27**
Work Type: **Reconstruction**

BILL OF QUANTITIES SUMMARY

ITEM NO.	DESCRIPTION	QTY.	UNIT	UNIT PRICE	TOTAL COST
1	1" Wide Electrical Tape, Black	3	roll		
2	100A Branch Ckt. Breaker Single Pole, 100 DF	1	ea		
3	100A Rate Main Panel Board, 1 panel	1	ea		
4	100A Rate Sub Panel Board, 4 panel	1	ea		
5	1-1/2" Dia. PVC Conduit 90deg Elbow	6	ea		
6	1-1/2" Dia. PVC Conduit Pipe, 10 ft	2	ea		
7	1-1/2" Dia. PVC Weather Head Entrance Cap	1	ea		
8	1-1/2" PVC Conduit Strap, 2 Holes	12	ea		
9	1-1/2" PVC Male Terminal Adaptor	4	ea		
10	1-1/2" PVC Male Terminal Adaptor - Lock Nut	4	ea		
11	1-1/2" PVC Type LL Condulet	2	ea		
12	12 AWG THHN Cu Wire, Black, 500ft/box	2	box		
13	12 AWG THHN Cu Wire, Green, 500ft/box	2	box		
14	12 AWG THHN Cu Wire, Red, 500ft/box	2	box		
15	2" PVC Unistrut	4	ea		
16	2/0 AWG THHN Cu Wire, Black	20	In ft		
17	2/0 AWG THHN Cu Wire, Green	20	In ft		
18	2/0 AWG THHN Cu Wire, Red	20	In ft		
19	20A Branch Ckt. Breaker Single Pole, 100 DF	2	ea		
20	20A, 2 Gang Outlet w/ Plate & Cover	6	ea		
21	3/4" Dia. PVC Conduit 90deg Elbow	25	ea		
22	3/4" Dia. PVC Conduit Pipe, 10 ft	42	ea		
23	3/4" Dia. PVC Conduit Strap, 2 Holes	170	ea		
24	3/4" Dia. PVC Male Terminal Adaptor	84	ea		
25	3/4" Dia. PVC Male Terminal Adaptor - Lock Nut	84	ea		
26	4' x 8' x 1/4" Thk Reg Grade ACX Plywood	148	ea.		
27	48"H Jalousie Aluminum Window Frame - Left & Right (for 4"W Wooden Jalousie Window)	76	pair		
28	4x4 PVC Octagonal J-box w/ Cover	30	ea		
29	5/8" thk. x 4' x 8' PT T-1-11 Plywood Siding Panel (4" groove spacing)	48	ea.		
30	5/8" x 8' cu ground rod w/ clamp	1	ea		
31	6 AWG THHN Cu Wire, Black	10	In ft		
32	Adapter, Female 3/4" Sch 40	2	ea.		
33	A1. Vinyl Coated Wire 1"x1" Mesh (48in. x 50ft.)	4	roll		
34	A2. Fiberglass Insect Screen (48in. x 25ft.)	6	roll		
35	Bar, Angle, 1/4"x 1 1/2" x 1 1/2" x 20ft L, HDG with pre punch hole	10	ea.		
36	Corr. Pre-Painted Galvalume Roof Sht.,32"W x 12ft L, ga. 26 (Blue)	84	ea.		
37	Corr. Pre-Painted Galvalume Roof Sht.,32"W x 8ft L, ga. 26 (Blue)	46	ea.		
38	D1 - 36"x 80" Opening Prefab Door Jamb, PT 2" x 6" Lumber, Prepainted Gray	3	ea.		
39	D1 - 36"x 80" Solid Core Panel Door (Prepainted Color Gray)	3	ea.		
40	Door Hinges 4x4, Brass (With Screws)	9	ea.		
41	Door Knob with Lock/Keys	3	ea.		
42	Faucet, Brass 3/4"	1	ea.		
43	Flat Bat 2"W x 16"H x 1/4" thk. W/ 2 holes - (1/2" dia for Machine bolt), HDG	72	ea.		
44	H2.5SS Hurricane Simpson Ties, Left	180	ea.		
45	H2.5SS Hurricane Simpson Ties, Right	180	ea.		
46	Insulator Wire Holder, Clamp Type, Porcelain	1	ea		
47	J-Bolt, 1/4" x 6" x 2" x 2" with hex nut/washer, SS	200	ea.		
48	Light Ceiling Socket, White	10	ea		
49	Light LED Bulb, 40 Watts	10	ea		
50	Lumber, Pressure Treated Douglas Fir #2, 2" x 2" x 16ft	190	ea.		
51	Lumber, Pressure Treated Douglas Fir #2, 2" x 4" x 16ft	202	ea.		
52	Lumber, Pressure Treated Douglas Fir #2, 2" x 6" x 16ft	6	ea.		
53	Lumber, Pressure Treated Douglas Fir #2, 2" x 8" x 16ft	145	ea.		
54	Lumber, Pressure Treated Douglas Fir #2, 1" x 1/2" x 16ft	15	ea.		
55	Lumber, Pressure Treated Douglas Fir #2, 1" x 2" x 16ft	36	ea.		
56	Lumber, Reg. Grade, 2" x 2" x 16ft	513	ea.		
57	Lumber, Reg. Grade, 2" x 3" x 16ft	70	ea.		
58	Lumber, Reg. Grade, 2" x 4" x 16ft	366	ea.		
59	Machine Bolt, 1/2" x 6 1/2", HDG w/ 2 washer & 1 nut	144	set		
60	Nails, Common, 1 1/2" (2D), HDG	12	lbs.		
61	Nails, Common, 1 1/2" (8D)	69	lbs.		
62	Nails, Common, 1 1/2" (8D), HDG	15	lbs.		
63	Nails, Common, 2 1/2" (8D), HDG	38	lbs.		
64	Nails, Common, 2" (6D), HDG	50	lbs.		
65	Nails, Common, 3" (10D)	127	lbs.		
66	Nails, Common, 3" (10D), HDG	165	lbs.		
67	Nails, Concrete, 2" (6D), HDG	1	lbs		
68	Nails, Concrete, 3" (10D)	4	lbs.		
69	Nails, Concrete, 4" HDG	31	lbs.		
70	Nails, SSNA8, 1 1/2"	20	lbs.		
71	Oatey PVC Cement 437mL	4	can		

72	Paint Brush, 2"	6	ea.		
73	Paint Brush, 4"	7	ea.		
74	Paint Roller w/ Pan 6"	6	gal.		
75	Paint Thinner	1	gal.		
76	Paint Wood Preservative	1	gal.		
77	Paint, Ceiling Paint, Flat, White	22	gal.		
78	Paint, Enamel, Semi-Gloss, White	22	ea.		
79	Paint, Multipurpose Primer (Masonry/Wood)	28	gal.		
80	Paint, Semi-Gloss Latex, Blue	5	gal.		
81	Paint, Semi-Gloss Latex, White	8	gal.		
82	Plastic Nylon String 1.8mm (100 yard/roll)	2	roll		
83	Plywood, Phenolic, ½"	73	ea.		
84	Plywood, PT ½" thick CDX	11	ea.		
85	Prefab Box Gutter, Galvalume 24" x 8ft L, ga. 26, (White) w/ 3 pcs Prebended 1"W x 1/4" Thk Gutter Holder (HDG)-set	36	set		
86	Prefab Galvalume Ridge Cap, 8ftL, ga. 26, (Blue)	23	ea.		
87	PVC 90 deg Bend 3/4" S-40	2	ea.		
88	PVC Ball Valve 3/4"	1	ea.		
89	PVC Bend, 3"Ø x 90 deg. S40	10	ea.		
90	PVC Cleanout Adapter with Plug (Threaded) 3"Ø S40	5	ea.		
91	PVC Pipe 3/4" x10' S-40	1	ea.		
92	PVC Pipe Saddle Clip for 3"Ø PVC Pipe, Sch. 40	21	ea.		
93	PVC Pipe, 3"Ø x 20 ft., Sched. 40	6	ea.		
94	PVC Tee 3"Ø S40	8	ea.		
95	PVC Union 3/4" S-40	1	ea.		
96	PVC Utility Box	3	ea		
97	Quikrete Concrete Mix Product No. 1101, 80lbs/bag	2307	bags		
98	Rebar#3, 3/8"GRD60 L20' (10mm), Epoxy coated	478	ea.		
99	Rebar#4, 1/2"GRD60 L20' (12mm) Epoxy Coated	20	ea.		
100	Rebar#5, 5/8"GRD60 L20' (16mm), Epoxy coated	255	ea.		
101	Rivets, blind, 3/16"Ø x ½" grip; SS (100 pcs/box)	10	box		
102	Roof Gutter Strainer or Drain round wire or dome type (2" dia)	5	ea.		
103	Roof Sealant Caulking Gun	1	ea.		
104	Roof Sealant, Polyurethane, 10oz	3	tubes		
105	Single Switch w/ Plate & Cover, Toggle	3	ea		
106	Surface Type Utility Box	6	ea		
107	Tie wire, G.I, Ga. 16	182	lbs.		
108	Umbrella Nail with shank, 2½", G.I. with rubber washer	1800	ea.		
109	Unistrut Channel 1-5/8" x 10' Ga. 12, HDG	2	ea		
110	W1 & W2 - 4"W x 24"L Wooden Jalousie Window, Prepainted White	570	ea.		
111	W2 - 2-Opening 24"W x 48"H, , Prefab Window Jamb (PT 2x6 Lumber, Prepainted Gray)	4	set		
112	W2 - 3-Opening 24"W x 48"H, , Prefab Window Jamb (PT 2x6 Lumber, Prepainted Gray)	10	set		
113	Water Tank 1,000 gal., P.E., w/ Lid, Food Grade, Stackable (One Assembly)	1	ea.		
114	Wire Nut (pcs)	250	ea		
		TOTAL CIF CHUUK =			

NOTES :

1. CIF Weno, Chuuk Port
2. All lumbers and plywoods labeled treated shall be CA-C (not CCA).

GRAND TOTAL FOR 5 PROJECTS (CIF CHUUK) =

VENDOR INFORMATION SHEET

Vendor No. _____
Internal to IOM

Registered Vendor Name*: _____

Other Names/Acronyms _____

Address* _____

House No _____

Street Name _____

ZIP/Postal Code* _____

City* _____

Region* _____

Country* _____

Contact Information

Company Tel/Mobile: _____ Contact Person: _____

Company Email: _____ Contact Person Position: _____

Company Website: _____

Notes

Industry Category*: _____

Business Type*: _____

Provide Services/Goods Internationally* _____

Disability-inclusive* _____

Women-owned/controlled* _____

All fields marked with * are mandatory. The form may be returned if mandatory fields are missing/incorrect or in the wrong format (esp, Zipcode).
Vendor Name - should match IDs or registration documents
UNGM IDs are required for vendors participating in tenders over 100K USD (25K USD medical). Please register an account via the designated links.
If there is insufficient space, please use the **Other Information** section

Product Categories (check all applicable)*

☐ Agriculture, Livestock and Fisheries
☐ Chemicals
☐ Clothing and Luggage
☐ Construction
☐ Consultancy and Contracted Services
☐ Finance and Administration
☐ Food and Beverage

☐ Fuels and Derivatives
☐ Furniture
☐ Hospitality, Events
☐ Insurances
☐ IT and Communications
☐ Land and Buildings
☐ Learning, Training and Recreation

☐ Legal and Investigation
☐ Logistics and Warehousing
☐ Media and Printing
☐ Medical, Drugs and Pharma
☐ NFIs – Household and Camps
☐ Office Equipment and Supply
☐ Personal Care

☐ Power Supply and Electric
☐ Quality Control and Environment
☐ Security
☐ Social and Humanitarian Services
☐ Tickets
☐ Tools and Machinery
☐ Vehicles and Accessories

UNGM No. _____

UN Partner Portal Reference _____

Registration Date _____

<https://www.ungm.org/UNUser/Home>

<https://www.unpartnerportal.org>

Main Country of Operations (dd-mmm-yyyy)

Licensing Auth./Type _____ **License No.:** _____ **Reg. Date:** _____ **Expiry Date:** _____

For additional licenses, please use the Other Information Section

dd-mmm-yyyy

dd-mmm-yyyy

Partner Entities (indicate if there are other relevant business partners)

☐ Parent company _____

Other Information:

Section II: Payment and Banking Information

Payment Details

Payment Method* ☐ Bank Transfer ☐ Check** ☐ Cash** ☐ Others** _____

Justification for Non-Bank Payment Method** _____

Notes

Payment currency of the vendor MUST be clearly marked in order to avoid additional bank charges and/or delay in payments.

Non-bank payment methods require justification.

Bank Details (mandatory if Payment Method is via Bank Transfer):

Bank Name _____

Bldg and Street _____

City _____

Postal Code _____



VENDOR INFORMATION SHEET

Country	_____
Bank Account Name	_____
Bank Keys	_____
Account Currency	_____
Bank Account No.	_____
*Depending on the country	_____
Swift Code/BIC (accounts outside U.S.A.)	_____
IBAN Number (mandatory for banks in Europe)	_____
Clearing No. (CHF accounts in Switzerland)	_____
ABA No. for ACH (USD accounts in U.S.A.)	_____
Bank Branch Code	_____

If awarded, please submit valid ID/licenses if applicable, the signed IOM Supplier Code of Conduct and Proof of Banking Details to IOM

I hereby certify that the information above are true and correct. I am also authorizing IOM to validate all claims with concerned authorities.

Printed Name

Signature

Position/Title

Date

IOM is strongly committed in observing the highest ethical standards in all its procurement activities. As such, this Code of Conduct for Suppliers has been prepared to provide clear summary of IOM's expectation from the suppliers in all procurement dealings, ensuring that internationally recognized procurement ethics are followed. Transparency and accountability should be strictly adhered to in all procurement activities.

IOM procurement ethics focuses on **zero tolerance on corruption, avoiding any form conflict of interest and honest representation of supplier's capabilities.**

Suppliers are strongly urged to familiarize themselves with this Code of Conduct to ensure successful working relations with IOM.

Policy on Corruption and Position on Conflict of Interest

IOM expects all contracted suppliers and companies seeking to sell goods or services to conduct their business in accordance with the highest ethical standards. Suppliers or potential suppliers must strictly comply with all rules and regulations on bribery, corruption and avoid unacceptable business practices. Hence suppliers are expected to observe the following:

- Shall not, directly or indirectly, offer to any IOM Staff money, goods or a service as a consideration or in expectation of a favorable decision, information, opinion, recommendation, vote or any other form of favoritism which qualifies as a corruption;
- Shall not directly or indirectly, offer, give or agree or promise to give to any IOM staff any gratuity for the benefit of/or at the direction or request of any Staff of IOM;
- To immediately inform the IOM Head of Office in the event that any Staff of IOM solicits or obtained or has made an attempt to obtain gratification for himself/herself or for any other persons.
- To immediately declare if any of the Company's staff and/or officers had or have any relative employed with IOM. Failure to make such declaration shall be construed as a conflict of interest and might result in the exclusion of the supplier from present and future procurement activities and/or other legal action as deemed fit by the Organization.

Representation from Suppliers

IOM expects all its suppliers to honestly declare and warrant that:

- It will comply with all rules, regulations and statutory requirements relating to the provision of the products/ services to IOM;
- It will not act in concert with other suppliers or agents when participating in a bid;
- It is a duly authorized/certified provider of the supplied products/services and shall not, expressly or impliedly hold itself out to be an agent/representative of a third party provider of the same products/services;

- It will only supply products that are certified to be of merchantable and satisfactory quality;
- The supplier possesses the necessary capabilities, equipment and suitable place of business to perform its obligations;
- It shall not contract out or subcontract or outsource any portion of the products/services unless prior written consent from IOM has been obtained; and
- It shall maintain the highest standards of integrity and quality of work at all times.

Applicability of the Code of Conduct

This Code of Conduct shall apply to all Suppliers, sub-contractors and to other entities acting on behalf of them (with approval of IOM).

Monitoring compliance to the Code of Conduct

To facilitate the monitoring of suppliers' compliance with this Code of Conduct, IOM expects suppliers to:

- Develop and maintain all necessary documentation to support compliance with the described standards; such documentation must be accurate and complete;
- Provide IOM's representatives with access to relevant records, upon IOM's request;
- Allow IOM's representatives to conduct interviews with the supplier's employees and with management separately;
- Allow IOM's representatives to conduct announced and unannounced site visits of supplier locations; and
- Respond promptly to reasonable inquiries from IOM's representatives in relation to the implementation of the Code of Conduct.

Secure Communication Channels

IOM has established a secure communication channel to enable the suppliers to raise their concerns confidentially and responsibly. If the supplier has questions about the Code of Conduct or wishes to report a questionable behavior or possible violation of the Code of Conduct, the Supplier is encouraged and should contact IOM Global Procurement and Supply Unit at email address

gpsu@iom.int or at: IOM Manila Administrative Centre
Global Procurement and
Supply Unit (formerly
Field Procurement Unit)
28th Floor Citibank Tower
8741 Paseo de Roxas, Makati City 1226, Philippines

IOM will not tolerate any retribution or retaliation by anyone against a concerned Supplier who has, in good faith, sought out advice or has reported questionable behavior and/or a possible violation. IOM will take disciplinary action up to and including termination of contract for anyone who threatens or engages in retaliation, retribution or harassment of the concerned individual. Identities and contents of all information or complaints will be treated strictly confidential.

SANCTIONS

Breach of the Code of Conduct may result in actions being invoked against that supplier, in addition to any contractual or legal remedies. The actions applied will depend on the nature and seriousness of the breach and on the degree of commitment shown by the supplier in breach to its obligations under the Code of Conduct. The range of actions available to be imposed on the supplier includes but is not restricted to the following:

- Formal warnings – that the continued non-compliance will lead to more severe actions;
- Disclosure of nature of breach to all IOM subsidiaries and associate companies;
- Immediate termination of contract, without recourse;

Acknowledgment and Acceptance, to be submitted together with VIS(Vendor Information Sheet)

This is to certify that I have fully read the Supplier's Code of Conduct attached. Having fully read and understood the completed requirement of this Supplier's Code of Conduct, I hereby commit myself and my company to serve this Code of Conduct and to fully comply with all of its principles. I also certify that I am authorized by my company to sign and accept this document in its behalf.

Supplier: _____

Address: _____

Representative: _____

Signature: _____

Purchase Order Standard Terms & Conditions

F 18.03

1. Agreement

This Purchase Order (PO) becomes the exclusive agreement between IOM and Supplier for the goods, subject to the Standard Terms and Conditions contained herein. Any of the following shall constitute Supplier's unqualified acceptance of this PO: (a) acknowledgement of this PO; (b) furnishing of any goods under this PO; or (c) acceptance of any payment. Additional or different terms and conditions proposed by Supplier shall be void and of no effect unless accepted in writing by IOM. Until so accepted, IOM reserves the right to return goods, at Supplier's expense. In the event of a conflict between the Supplier's terms of acceptance and the PO Terms and Conditions, the PO Terms and Conditions shall govern unless IOM agrees in writing to the Supplier's proposed terms. In the event of a conflict between the terms of Annex(es) to the PO and the PO Terms and Conditions, the PO Terms and Conditions shall prevail.

2. PO Identification

The PO number must appear on all invoices, bills of lading, packing slips, cartons, and correspondence.

3. Delivery

Delivery must be completed within the delivery schedule stated on this PO. Otherwise, IOM reserves the right to (a) cancel this PO without liability and to charge Supplier with any loss incurred as a result of Supplier's failure to make the delivery within the delivery schedule specified; or (b) charge a penalty of [0.1%] of the total price for every day of breach of the delivery schedule by the Supplier.

4. Payment

Supplier shall invoice IOM upon delivery of the goods and payment shall be made within the stated period after receipt of the invoice. Payment shall be made to the Supplier as stated in the "Terms of Payment" of the Purchase Order.

5. Adjustments

IOM reserves the right to change at any time the quantity, packaging, unit size, place and/or time of delivery. Supplier agrees to proceed with this PO in accordance with any such change(s) and to submit a claim request for an equitable adjustment in the PO price or delivery term caused by such change(s). IOM may deem any claim by Supplier for equitable adjustments under this clause waived unless asserted in writing within 10 days from receipt by Supplier of IOM's change(s). No change in, modification of, or revision to this PO shall be valid unless in writing and signed by an authorized representative of IOM.

6. Packaging

Supplier must provide proper and adequate packaging in accordance with best commercial practice, to ensure that the material being shipped to IOM will be free of damage. Packaging must be adequate to allow for rough handling during transit, exposure to extreme temperatures, salt and precipitation during transit and open storage, with consideration for the type of Goods and transportation mode. IOM reserves the right to reject any shipment that is deemed not to have been packaged adequately.

7. Inspection and Acceptance

- a) IOM or its representative shall have the right to inspect and/or test the goods at no extra cost to IOM at the premises of the Supplier, at the point of delivery or at the final destination. The Supplier shall facilitate such inspections and provide required assistance.
- b) IOM shall have 30 calendar days after proper receipt of the goods purchased to inspect them and either accept or reject them as non-conforming with this PO. Based on an inspection of a valid sample, IOM may reject the entire delivery. IOM may also charge the cost of inspecting rejected goods to Supplier. All rejected goods will be returned to Supplier, transportation charges collect, or held by IOM for disposition at Supplier's risk and expense. Supplier agrees that IOM's payment under this PO shall not be deemed acceptance of any goods delivered hereunder. IOM's right to reject the Goods shall not be limited or waived by the Goods having been previously inspected or tested by IOM prior to delivery.
- c) The Supplier agrees that any acceptance by IOM does not release the Supplier from any warranty or other obligations under this Contract
- d) Title to the goods shall pass when they are delivered and accepted by IOM. Risk of loss, injury, or destruction of the goods shall be borne by Supplier until title passes to IOM.

8. Warranties

8.1 Supplier represents and warrants that:

- (a) The goods are conforming to the specifications, drawings, samples, or other descriptions furnished or specified by IOM and are free from defect in material and workmanship. This warranty shall remain valid for twelve (12) months after the Goods have been delivered to and accepted at the final destination. IOM's continued use of such goods after notifying Supplier of their defect or failure to conform will not be considered a waiver of Supplier's warranty.
- (b) It has full title to the goods and is a company financially sound and duly licensed, with adequate human resources, equipment, competence, expertise and skills necessary to carry out fully and satisfactorily, within the stipulated completion period, the delivery of the goods in accordance with this PO;
- (c) It shall comply with all applicable laws, ordinances, rules and regulations when performing its obligations under this PO;
- (d) In all circumstances it shall act in the best interests of IOM;
- (e) No official of IOM or any third party has received or will be offered by the Supplier any direct or indirect benefit arising from the PO or award thereof;
- (f) It has not misrepresented or concealed any material facts in the procuring of this PO;
- (g) The Supplier, its staff or shareholders have not previously been declared by IOM ineligible to be awarded contracts by the IOM;
- (h) It will abide by the highest ethical standards in the performance of this Contract, which includes not engaging in any discriminatory or exploitative practice or practice inconsistent with the rights set forth in the Convention on the Rights of the Child;
- (i) The prices established hereunder shall not exceed those offered for similar goods to Supplier's other customers;
- (j) The remuneration of the Supplier under this PO shall constitute the sole remuneration in connection with this PO. The Supplier shall not accept for its own benefit any trade commission, discount or similar payment in connection with activities pursuant to this PO or the discharge of its obligations thereunder. The Supplier shall ensure that any subcontractors, as well as the personnel and agents of either of them, similarly, shall not receive any such additional remuneration.

8.2 The Supplier further warrants that:

- (a) It shall take all appropriate measures to prevent actual, attempted or threatened sexual exploitation or abuse (SEA) by its employees or any other persons engaged and controlled by it to perform any activities under this Agreement. In addition, it shall take all appropriate measures to prohibit its employees or other persons engaged and controlled by it from exchanging any money, goods, or services at their disposal under this Agreement, for sexual favours or activities.

- (b) It shall strongly discourage sexual relationships between its employees and IOM beneficiaries, and between any other person engaged and controlled by it to perform activities under this Agreement and IOM beneficiaries.
- (c) It shall take all appropriate measures to ensure that its employees or any other persons engaged and controlled by it to perform any activities under this Agreement do not engage in sexual activity with children (persons under the age of 18) regardless of the age of majority or age of consent locally. Mistaken belief regarding the age of a child is not a defence. This prohibition shall not apply where the employee or other person engaged and controlled by it to perform activities under this Agreement is legally married to someone under the age of 18 but over the age of majority or consent in their country of citizenship.
- (d) It shall report all and any complaints or concerns regarding possible SEA by its employees, any other persons engaged and controlled by it to perform any activities under this Agreement, or IOM personnel; and it shall take all appropriate measures to ensure that its employees or any other persons engaged and controlled by it to perform any activities under this Agreement shall report to IOM and/or the Supplier any complaints or concerns regarding possible SEA by its employees, any other persons engaged and controlled by it to perform any activities under this Agreement, or IOM personnel
- (e) It shall take all necessary measures to investigate allegations or suspicions of SEA and take appropriate corrective action, including disciplinary action, against its employee or any other person engaged and controlled by it to perform any activities under this Agreement who is found to have committed SEA.
- (f) Its failure to take preventive measures against SEA, to duly report any complaints or concerns about SEA to IOM, to investigate allegations thereof, or to take corrective action when SEA has occurred, shall constitute grounds for termination of this Agreement.
- (g) In the event of subcontracting approved by IOM in accordance with this Agreement, it shall receive a written confirmation from subcontractors that they accept the standards above and shall include them in all subcontracts.

9. Indemnification

The Supplier shall at all times defend, indemnify, and hold harmless IOM, its officers, employees, and agents from and against all losses, costs, damages and expenses (including legal fees and costs), claims, suits, proceedings, demands and liabilities of any kind or nature to the extent arising out of or resulting from acts or omissions of the Supplier or its employees, officers, agents or subcontractors, in the performance of this Contract. IOM shall promptly notify the Supplier of any written claim, loss, or demand for which the Supplier is responsible under this clause. This indemnity shall survive the expiration or termination of this Contract.

10. Termination and Reprocurement

- (a) IOM may terminate this PO at any time with one week written notice to Supplier. Any monies paid in advance by IOM shall be refunded no later than the date of termination.
- (b) If IOM terminates this PO in whole or in part for default on the part of the Supplier, it may acquire elsewhere goods similar to those terminated and Supplier shall be liable for any excess costs to IOM for those goods. Supplier shall not be liable for any excess costs if the failure to perform under this PO arises from causes beyond its control and without fault or negligence of the Supplier.

11. Independent Contractor

The Supplier shall supply goods pursuant to this PO as an independent contractor and not as an employee, partner, or agent of IOM.

12. Audit

The Supplier agrees to maintain records, in accordance with sound and generally accepted accounting procedures, of all direct and indirect costs of whatever nature involving transactions related to the provision of services under this Agreement. The Supplier shall make all such records available to IOM or the IOM's designated representative at all reasonable times until the expiration of seven (7) years after the date of final payment, for inspection, audit, or reproduction for the purpose of verifying services or quantities delivered, or the right of Supplier to any price adjustment or extra charge claimed under this PO. On request, employees of the Supplier shall be available for interview.

13. Settlement of Dispute

Any dispute, controversy or claim arising out of or relating to this PO, or the breach, termination or invalidity thereof shall be settled by negotiation between the Parties. In the event that such negotiation is unsuccessful, either Party may submit the dispute to arbitration. The arbitration will be carried out in accordance with the UNCITRAL Arbitration Rules as at present in force. The arbitral award will be final and binding.

14. Confidentiality

All information which comes into the Supplier's possession or knowledge in connection with this PO is to be treated as strictly confidential. The Supplier should not communicate such information to any third party without the prior written approval of IOM. The Supplier shall comply with IOM Data Protection Principles in the event that it collects, receives, uses, transfers or stores any personal data in the performance of this PO. These obligations shall survive the expiration or termination of this PO.

15. Use of IOM Name

The use of the official logo and name of IOM may only be used by Supplier in connection with this PO and with the prior written approval of IOM.

16. Status of IOM

Nothing in this Agreement affects the privileges and immunities enjoyed by IOM as an intergovernmental organization.

17. Assignment and Subcontracting

The Supplier shall not assign or subcontract the Contract or any work under this Contract in part or all, unless agreed upon in writing in advance by the Organization. Any subcontract entered into by the Supplier without approval in writing by the IOM may be cause for termination of the PO.

18. Waiver

Failure by either Party to insist in any one or more instances on a strict performance of any of the provisions of this PO shall not constitute a waiver or relinquishment of the right to enforce the provisions of this PO in future instances, but this right shall continue and remain in full force and effect.

19. Severability

If any part of this PO is found to be invalid or unenforceable, that part will be severed from this PO and the remainder of the PO shall remain in full force.